

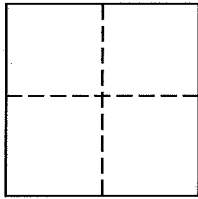
**Lands of Good/Myers**  
**Job #: 151688**

**CORNER RECORD**

Document Number 043-224-01

City of Mill Valley in County of Marin, California

Brief Legal Description: Being Lot 413 and Parcel A, per "Map of Strawberry Manor Subdivision Four, Marin County, California" filed in Volume 7 of Maps, at Page 10, Marin County Records.



**CORNER TYPE**

Government Corner  Control

Meander  Property

Rancho  Other

Date of Survey September 9, 2015

**COORDINATES (Optional)**

N \_\_\_\_\_

E \_\_\_\_\_

Zone \_\_\_\_\_ NAD27  NAD83

NAD 83 Epoch \_\_\_\_\_

Elev. \_\_\_\_\_

Vert. Datum: NGVD29  NAVD88

Meas. Units: Metric  Imperial

**Corner -** Left as found  Found and tagged  Established  Reestablished  Rebuilt

Identification and type of corner found: Evidence used to identify or procedure used to establish or reestablish the corner:  
See Page 2 of 2 for information

A description of the physical condition of the monument as found and as set or reset:  
See Page 2 of 2 for information

**SURVEYOR'S STATEMENT**

This Corner Record was prepared by me or under my direction in conformance with  
The Land Surveyor's Act on September 22, 2015.

Signed [Signature] P.L.S. 6649



**COUNTY SURVEYOR'S STATEMENT**

This Corner Record was received SEPTEMBER 29, 2015  
and examined and filed DECEMBER 1, 2015

Signed [Signature] P.L.S. or R.C.E. No. 7821

Title County Surveyor

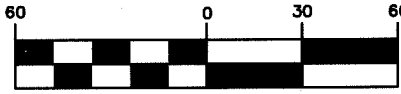
County Surveyors' Comment \_\_\_\_\_



All distances shown are in feet and decimals thereof

# LEGEND

## GRAPHIC SCALE



( IN FEET )

- Found 3/4" Iron Pipe & Brass Tag, Stamped "PLS 3971", (U.N.O.)
- ★ Found Nail & Brass Tag Set in Concrete, Illegible ( )2
- ⊙ Found 2 1/2" Brass Disk with Punch, Stamped "Marin County Works District"
- Set 6" Nail with Aluminum Washer, Stamped "LA STEVENS PLS 6649."
- ⊙ Set 5/8" Rebar 1 1/2" Aluminum Cap with Punch, Stamped "LA STEVENS PLS 6649" U.N.O.

U.N.O. Unless Noted Otherwise

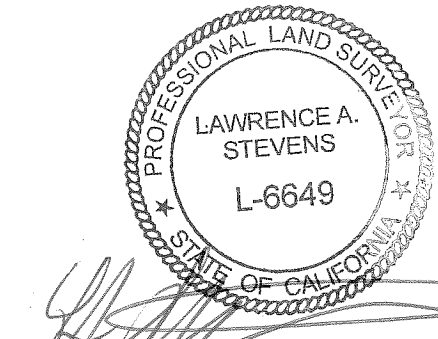
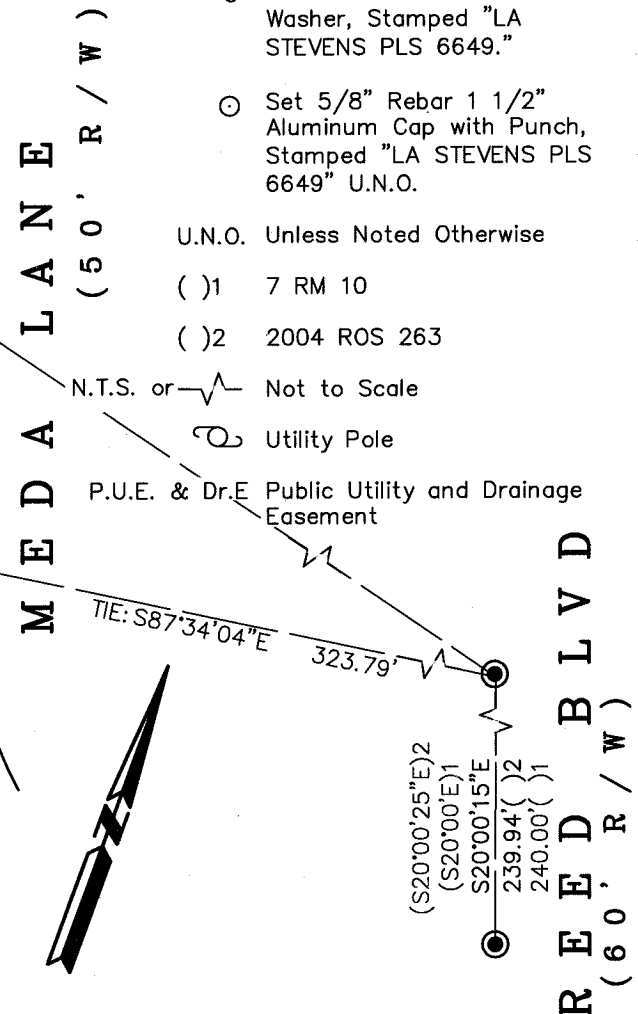
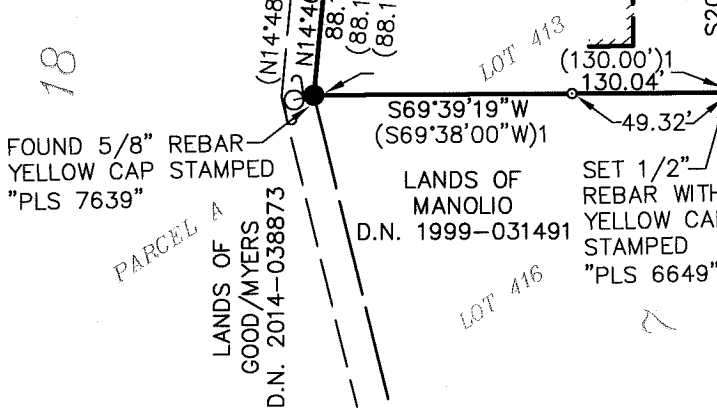
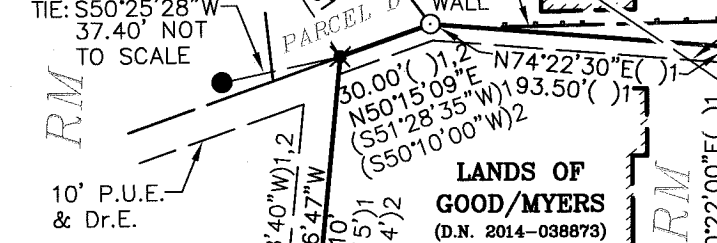
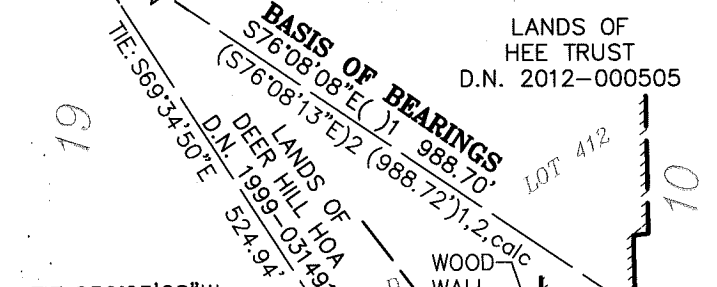
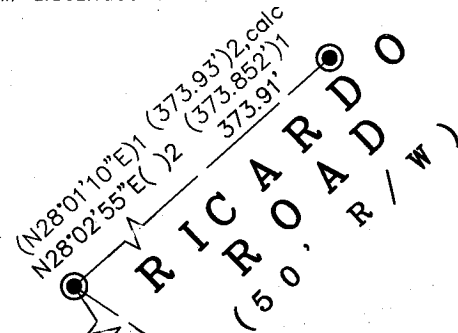
( )1 7 RM 10

( )2 2004 ROS 263

N.T.S. or Not to Scale

Utility Pole

P.U.E. & Dr.E Public Utility and Drainage Easement



Lawrence A. Stevens, PLS 6649

## Corner Record Lands of Good/Myers

(DN 2014-38873)  
(Lot 413, 7 RM 10)  
(Parcel A, 7 RM 10)

Mill Valley Marin County California

Scale: 1" = 60'

September 2015

L.A. Stevens & Associates, Inc.

Professional Land Surveyors \* (415) 382-7713  
7 Commercial Blvd., Suite 1 \* Novato, CA 94949