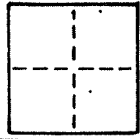


COUNTY OF Marin T. _____ R. _____ MERIDIAN _____ CALIFORNIA _____

CORNER TYPE: GOVT. CORNER MEANDER RANCHO CONTROL OTHER

CORNER IDENTIFICATION — DATE OF VISIT June 1987



Centerline intersection of Reed Boulevard and Meda Lane per map of Strawberry Manor Subdivision Five (7 Maps 35)

CORNER — LEFT AS FOUND FOUND AND TAGGED REESTABLISHED OBLITERATED CORNER REBUILT

PHYSICAL DESCRIPTION OF CORNER FOUND; EVIDENCE AND METHOD USED TO IDENTIFY OR REESTABLISH

In 1979 found nail 3" below AC surface, set RR spike, at point indicated by street improvements and in substantial agreement with next monument.

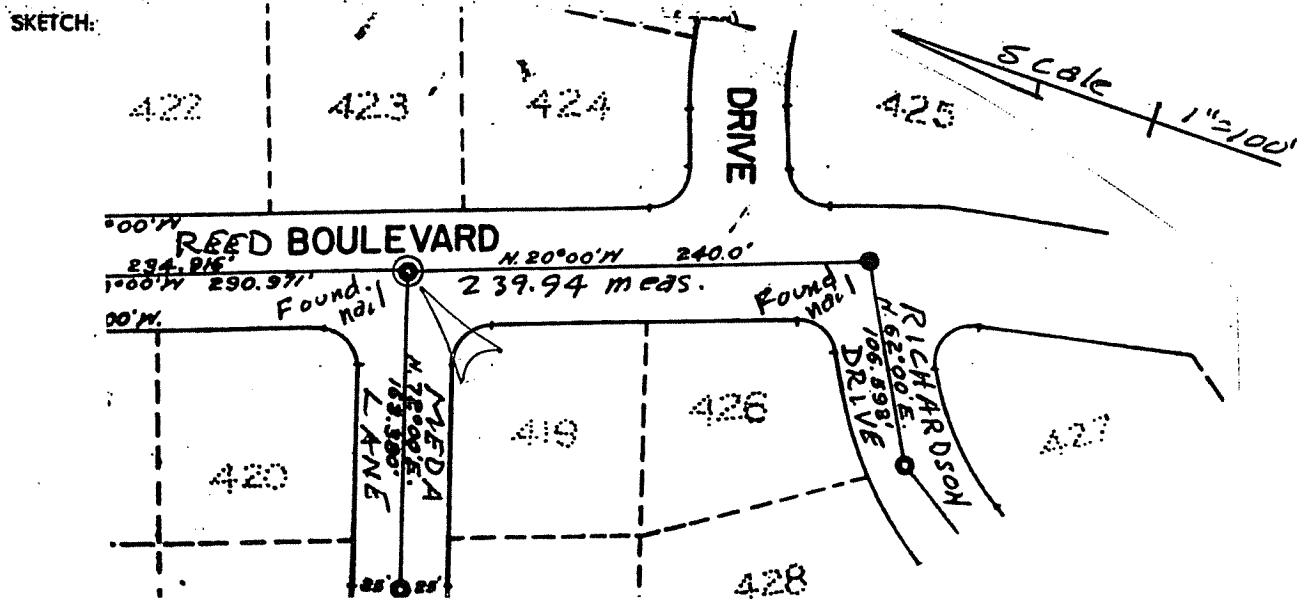
PHYSICAL DESCRIPTION OF MONUMENTS, REBUILT OR PERPETUATED

In 1987 replace RR spike with DPW bronze disk in standard street monument.

CALIFORNIA COORDINATE SYSTEM ORDER: FIRST SECOND THIRD

STATIONS USED: NGS (USC & GS) STATE COUNTY OTHER STATION _____ STATION _____

ZONE _____ ELEVATION _____ NORTHINGS (Y) _____ EASTINGS (X) _____



LICENSED LAND SURVEYOR
DONALD GLENN THOMAS

SURVEYOR'S CERTIFICATE

THIS CORNER RECORD WAS PREPARED BY ME OR UNDER MY DIRECTION, IN CONFORMANCE WITH THE LAND SURVEYORS ACT ON JUNE 16/30/87 1987

SIGNED: Donald Thomas

L.S. or R.C. No. LS 3288

STATE OF CALIFORNIA

REGISTERED PROFESSIONAL ENGINEER
CHARLES E. MURPHY

COUNTY SURVEYOR'S CERTIFICATE

THIS CORNER RECORD WAS RECEIVED 7-20 1987
AND EXAMINED AND FILED
NO. 18652 BY Charles E. Murphy
Exp. 6-30-89
TITLE: Dep. Co. Surv

CIVIL
STATE OF CALIFORNIA

STATEMENT ON BACK OF SHEET YES NO

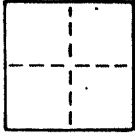
Marin County
Department of Public Works

CORNER RECORD

AP Book 43, Page 22

COUNTY OF Marin T. _____ R. _____ MERIDIAN _____ CALIFORNIA

CORNER TYPE: GOVT. CORNER MEANDER RANCHO CONTROL OTHER
CORNER IDENTIFICATION — DATE OF VISIT June 19 87



Centerline intersection of Reed Boulevard and Richardson Drive per map of Strawberry Manor Subdivision Five (7 Maps 35).

CORNER — LEFT AS FOUND FOUND AND TAGGED REESTABLISHED OBLITERATED CORNER REBUILT

PHYSICAL DESCRIPTION OF CORNER FOUND; EVIDENCE AND METHOD USED TO IDENTIFY OR REESTABLISH

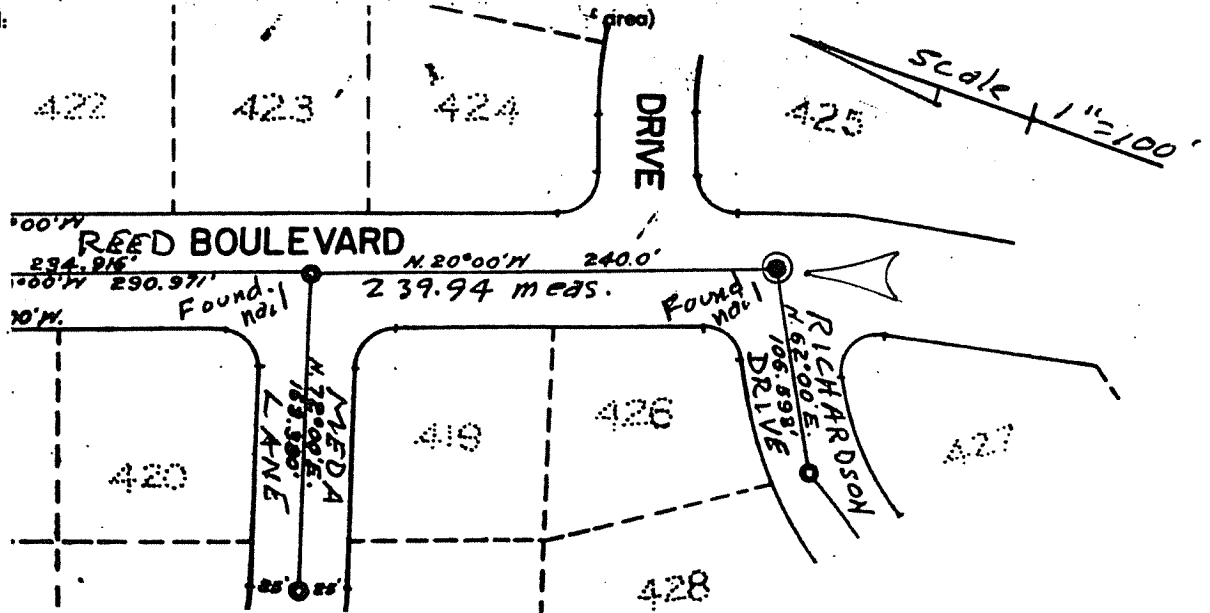
In 1979 found nail 3-1/2" below AC surface, set RR spike at point indicated by street improvements and in substantial agreement with next monument.

PHYSICAL DESCRIPTION OF MONUMENTS REBUILT OR PERPETUATED

In 1987 replaced RR spike with DPW bronze disk in standard street monument.

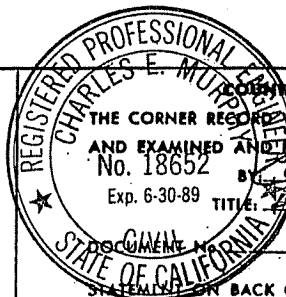
CALIFORNIA COORDINATE SYSTEM ORDER: FIRST SECOND THIRD
STATIONS USED: NGS (USC & GS) STATE COUNTY OTHER STATION _____ STATION _____
ZONE _____ ELEVATION _____ NORTHINGS (Y) _____ EASTINGS (X) _____

SKETCH:



SURVEYOR'S CERTIFICATE
THIS CORNER RECORD WAS PREPARED BY ME OR UNDER MY DIRECTION IN CONFORMANCE WITH THE LAND SURVEYORS ACT ON JUNE 16 19 87
Exp. 6/30/88

SIGNED: Donald Thomas
L.S. or R.C.E. No. LS 3288



COUNTY SURVEYOR'S CERTIFICATE
THE CORNER RECORD WAS RECEIVED _____ 19 ____
AND EXAMINED AND FILED 7-20 19 87
No. 18652 BY Charles E. Mumford
Exp. 6-30-89 TITLE: Rep. Co. Surv.

DOCUMENT NO. _____
STATE OF CALIFORNIA
STAMP ON BACK OF SHEET

YES NO