

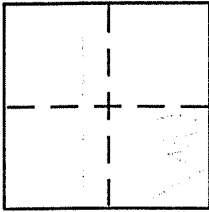
**CORNER RECORD**

Document Number APN 43-215-05

City of Mill Valley

County of Marin, California

Brief Legal Description Lot 501, 7RM 35



**CORNER TYPE**

Government Corner  Control   
Meander  Property   
Rancho  Other   
Date of Survey \_\_\_\_\_

**COORDINATES (Optional)**

N. \_\_\_\_\_  
E. \_\_\_\_\_  
Zone \_\_\_\_\_ NAD27  NAD83   
NAD83 Epoch \_\_\_\_\_  
Elev. \_\_\_\_\_  
Vert. Datum: NGVD29  NAVD88   
Meas. Units: Metric  Imperial

Corner - Left as found  Found and tagged  Established  Reestablished  Rebuilt

Identification and type of corner found: Evidence used to identify or procedure used to establish or reestablish the corner:

Found Street Monuments as per 7RM 35

A description of the physical condition of the monument as found and as set or reset: Set 3/4" Iron Pipe w/ Plastic Cap, RCE 30465; see over

**SURVEYOR'S STATEMENT**

This Corner Record was prepared by me or under my direction in conformance with the Land Surveyor's Act on April 5 2004

Signed [Signature] P.L.S or R.C.E. No. 30465

**COUNTY SURVEYOR'S STATEMENT**

This Corner Record was received MAY 6, 2004  
and examined and filed JUNE 3, 2004

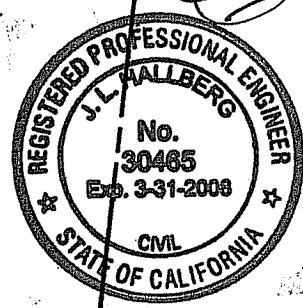
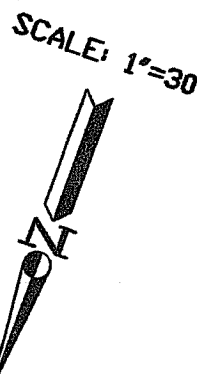
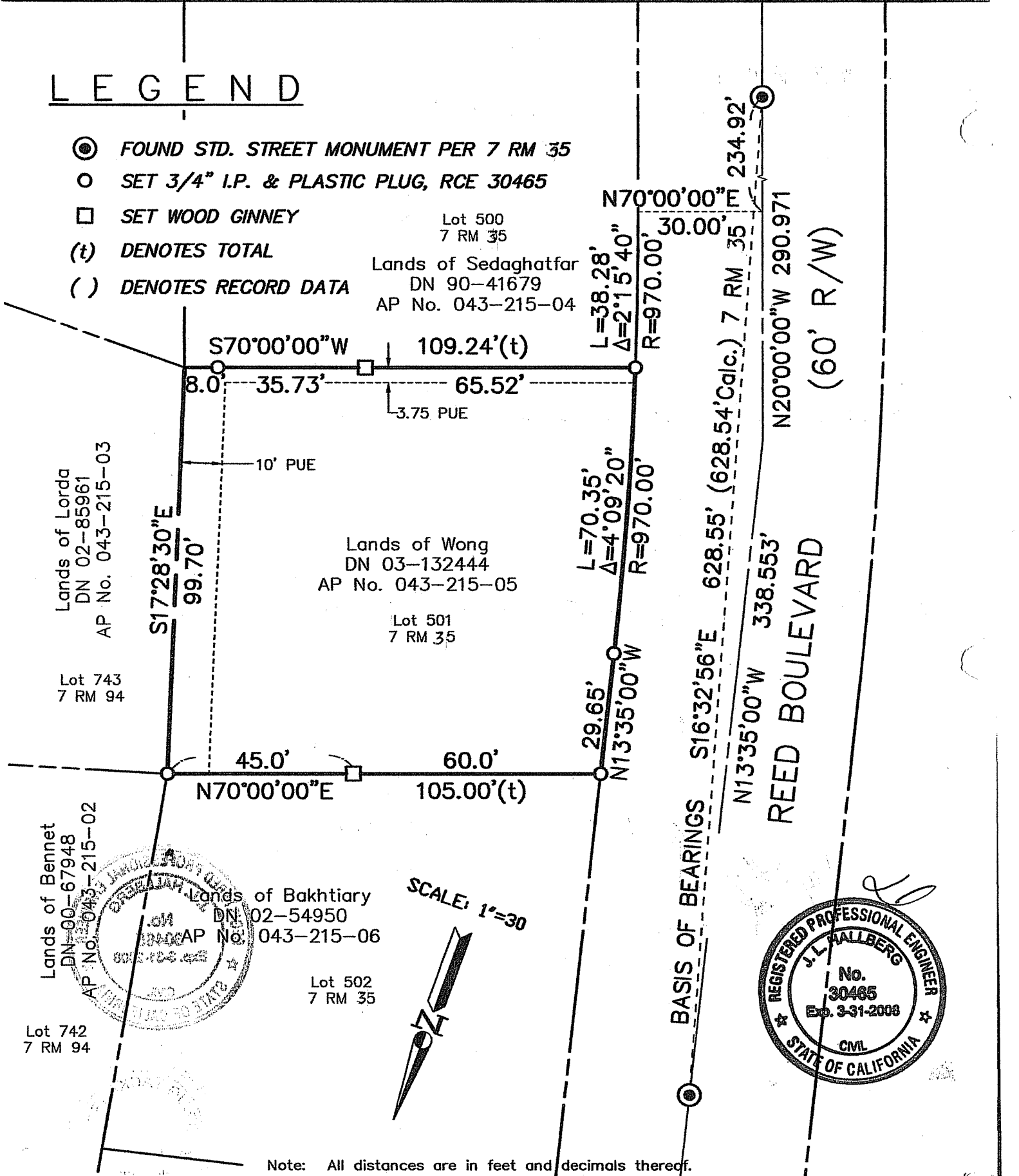
Signed [Signature] P.L.S or R.C.E. No. 7128  
Title COUNTY SURVEYOR

County Surveyor's Comment \_\_\_\_\_



# LEGEND

- ⊙ FOUND STD. STREET MONUMENT PER 7 RM 35
- SET 3/4" I.P. & PLASTIC PLUG, RCE 30465
- SET WOOD GINNEY
- (t) DENOTES TOTAL
- ( ) DENOTES RECORD DATA



Note: All distances are in feet and decimals thereof.

DATE:	1	OF	1
SCALE:	1" = 30'	DESIGN:	TH
DATE:	4-12-04	DRAWN:	TH
DATE:	2004-054	CHECKED:	J.L.H

**J.L. ENGINEERING**  
**CIVIL ENGINEERS—LAND SURVEYORS**

**Corner Record**  
 Lands of Wong — 239 Reed Boulevard