

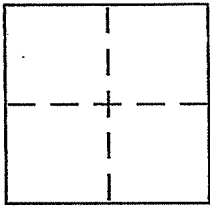
CORNER RECORD

Document Number 43-213-07

City of MILL VALLEY

County of MARIN, California

Brief Legal Description Lot 411 STRAWBERRY MANOR Unit 4 TRM10



CORNER TYPE

Government Corner Control
Meander Property
Rancho Other
Date of Survey 11/09/2007

COORDINATES (Optional)

N. _____
E. _____
Zone _____ NAD27 NAD83
NAD83 Epoch _____
Elev. _____
Vert. Datum: NGVD29 NAVD88
Meas. Units: Metric Imperial

Corner - Left as found Found and tagged Established Reestablished Rebuilt

Identification and type of corner found: Evidence used to identify or procedure used to establish or reestablish the corner:

REESTABLISH THE SOUTHERLY LINE OF LOT 411 STRAWBERRY MANOR SUB 4 TRM10 FROM STANDARD STREET MONUMENTS OF SAID MAP ON REED BOULEVARD, SEE SKETCH ON REVERSE SIDE FOR DETAILS

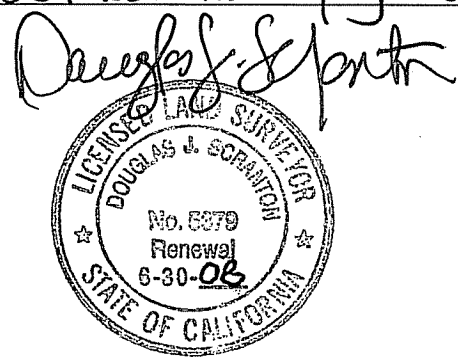
A description of the physical condition of the monument as found and as set or reset:

AT SOUTHWEST CORNER OF LOT 411 SET 1/2" REBAR WITH PLS CAP STAMPED "SCRANTON, PLS 5379" AFFIXED TO TOP OF REBAR & DRIVEN FLUSH TO SURROUNDING GRADE

SURVEYOR'S STATEMENT

This Corner Record was prepared by me or under my direction in conformance with

the Land Surveyor's Act on APRIL 30 2008
Signed Douglas J. Scranton P.L.S or R.C.E. No. PLS 5379



COUNTY SURVEYOR'S STATEMENT

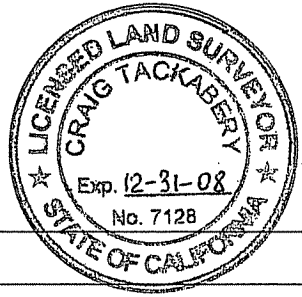
This Corner Record was received MAY 9, 2008

and examined and filed JUNE 24, 2008

Signed _____ P.L.S or R.C.E. No. 7128

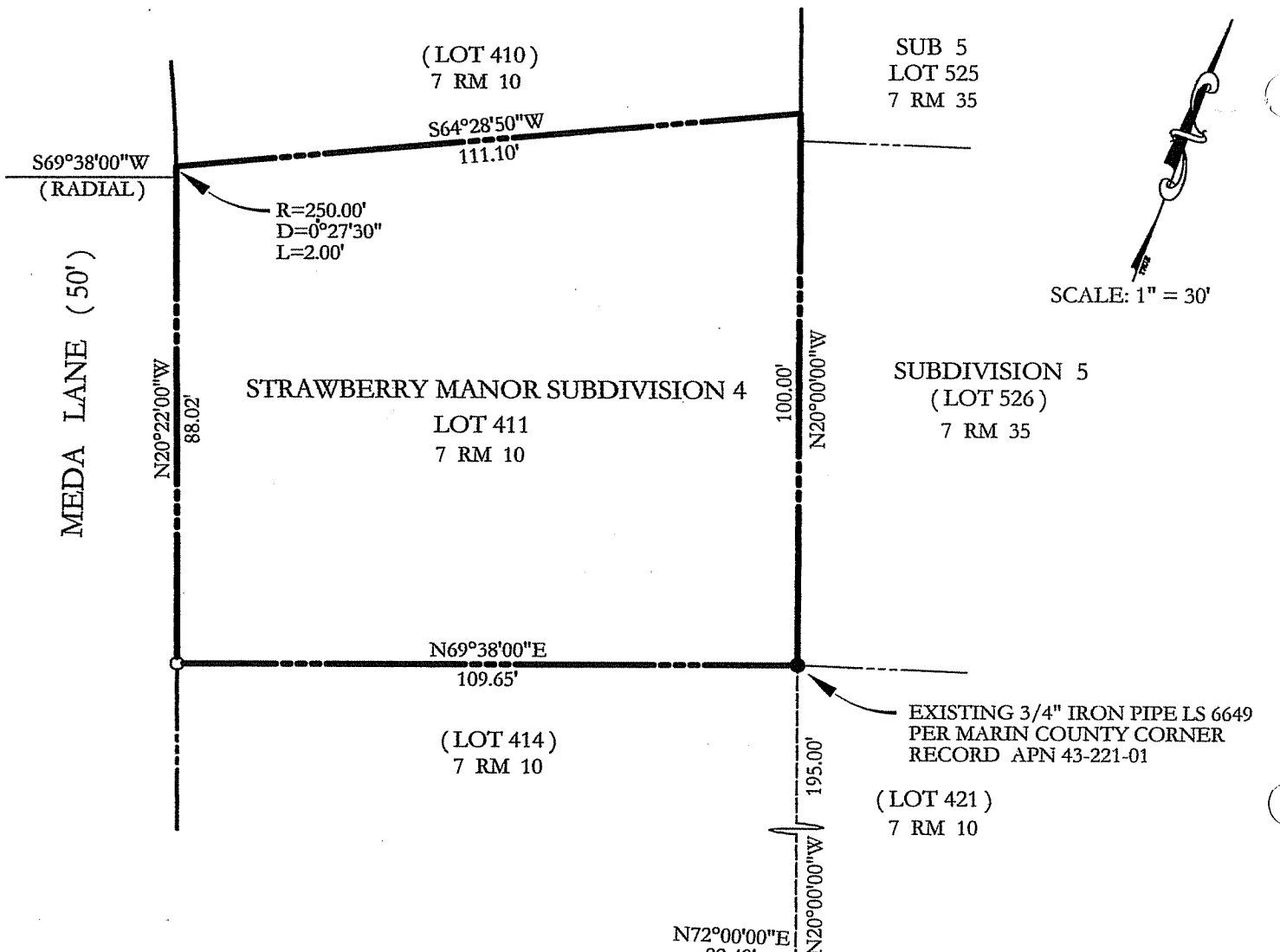
Title COUNTY SURVEYOR

County Surveyor's Comment _____



PREPARED BY DS SCRANTON SURVEYING NOVATO, CA

JN 10740



REFERENCES

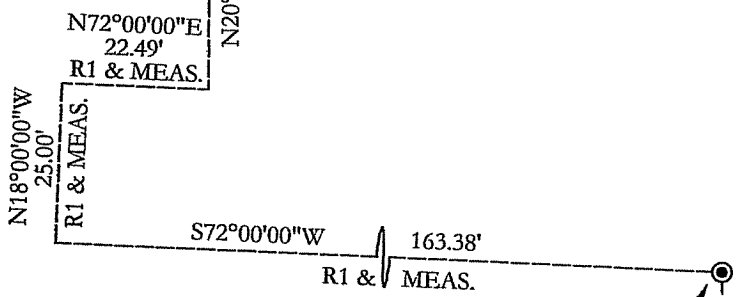
R1 7 RM 10
 STRAWBERRY MANOR
 UNIT 4

LEGEND

- SET 1/2" REBAR WITH PLS 5379
 PLASTIC CAP AFFIXED TO TOP
 (UNLESS NOTED OTHERWISE)
- ⊙ STANDARD CITY STREET MONUMENT
- FOUND MONUMENTATION AS NOTED

BASIS OF BEARINGS

TAKEN AS NORTH 20°00'00 WEST BETWEEN
 EXISTING STANDARD STREET MONUMENTS
 AS SHOWN AND AS SAID MONUMENTS
 ARE DEPICTED UPON R1



NOTE:

THE STREET MONUMENTS ON MEDA LANE
 SHOWN PER R1 WERE NOT FOUND

ALL DISTANCES GIVEN IN FEET
 AND DECIMALS THEREOF

NO EASEMENTS ARE DEPICTED

