

Marin County
Department of Public Works

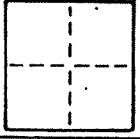
AP Book 43, Page 21

CORNER RECORD

COUNTY OF Marin T. _____ R. _____ MERIDIAN CALIFORNIA

CORNER TYPE: GOV'T. CORNER MEANDER RANCHO CONTROL OTHER

CORNER IDENTIFICATION - DATE OF VISIT June 19 87



Centerline P.I. on Ricardo in front of Lot 204
per Map of Strawberry Manor (6 Maps 63)

CORNER - LEFT AS FOUND FOUND AND TAGGED REESTABLISHED OBLITERATED CORNER REBUILT

PHYSICAL DESCRIPTION OF CORNER FOUND, EVIDENCE AND METHOD USED TO IDENTIFY OR REESTABLISH

Found 1-1/2" I.P. and nail 3-1/2" below AC surface. Found at point indicated by street improvements and in substantial agreement with neighboring monuments.

PHYSICAL DESCRIPTION OF MONUMENTS, REBUILT OR PERPETUATED

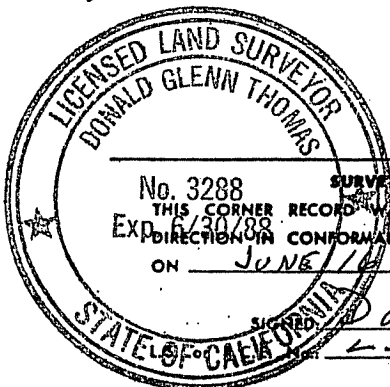
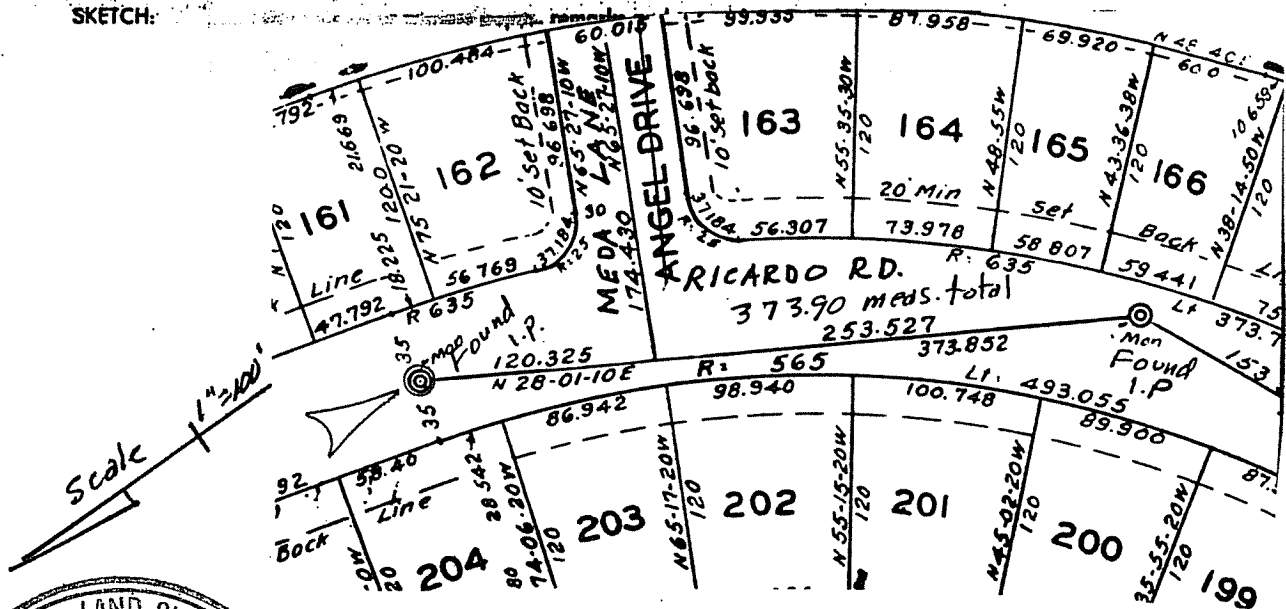
Replaced I.P. with DPW bronze disk in standard street monument.

CALIFORNIA COORDINATE SYSTEM ORDER: FIRST SECOND THIRD

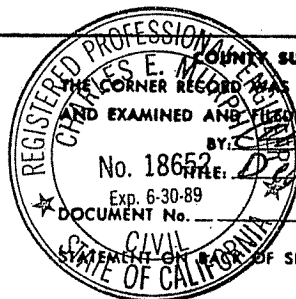
STATIONS USED: NGS (USC & GS) STATE COUNTY OTHER STATION _____ STATION _____

ZONE _____ ELEVATION _____ NORTHINGS (Y) _____ EASTINGS (X) _____

SKETCH:



SURVEYOR'S CERTIFICATE
 No. 3288
 THIS CORNER RECORD WAS PREPARED BY ME OR UNDER MY
 EXP. 6/30/88
 DIRECTION IN CONFORMANCE WITH THE LAND SURVEYORS ACT
 ON JUNE 16 19 87
 SIGNED Donald Thomas
 L.S. 3288



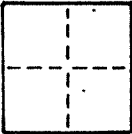
COUNTY SURVEYOR'S CERTIFICATE
 THIS CORNER RECORD WAS RECEIVED
 AND EXAMINED AND FILED
 BY Charles E. McMillen
 No. 18652 TITLE: DPW. Co. Surv.
 Exp. 6-30-89
 DOCUMENT No. _____

SEAL

YES NO

CORNER RECORD

COUNTY OF Marin T. _____ R. _____ MERIDIAN _____ CALIFORNIA _____
 CORNER TYPE: GOVT. CORNER MEANDER RANCHO CONTROL OTHER
 CORNER IDENTIFICATION - DATE OF VISIT June 19 87



Centerline P.I. on Ricardo Road in front of Lot 200
per Map of Strawberry Manor (6 Maps 63)

CORNER - LEFT AS FOUND FOUND AND TAGGED REESTABLISHED OBLITERATED CORNER REBUILT

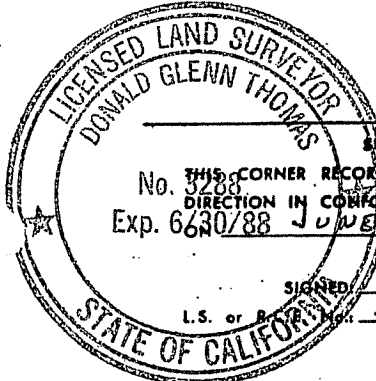
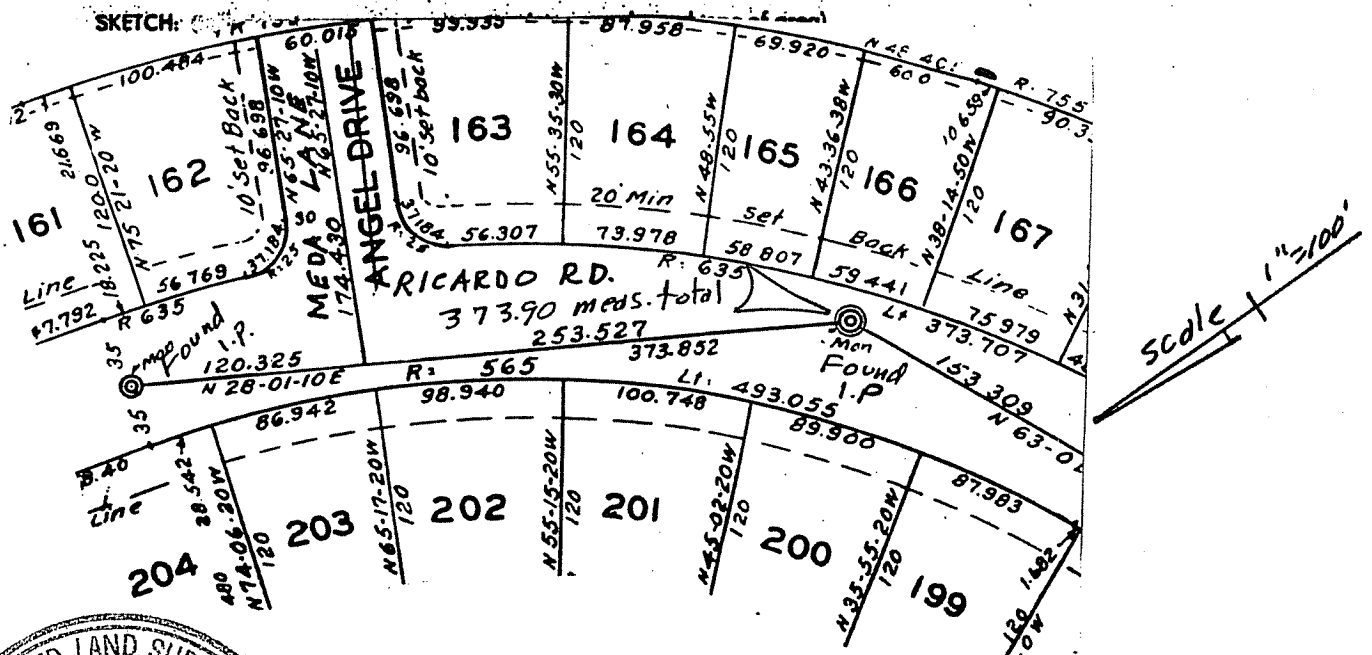
PHYSICAL DESCRIPTION OF CORNER FOUND; EVIDENCE AND METHOD USED TO IDENTIFY OR REESTABLISH

Found 1-1/2" 1 P and nail on AC surface. Found at point indicated by street improvements and in substantial agreement with neighboring monuments.

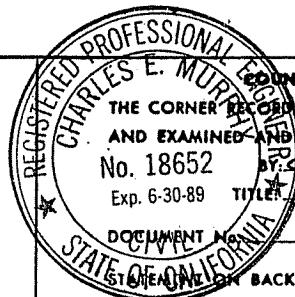
PHYSICAL DESCRIPTION OF MONUMENTS, REBUILT OR PERPETUATED

Replaced 1.P. with DPW bronze disk in standard street monument.

CALIFORNIA COORDINATE SYSTEM ORDER: FIRST SECOND THIRD
 STATIONS USED: NGS (USC & GS) STATE COUNTY OTHER STATION _____ STATION _____
 ZONE _____ ELEVATION _____ NORTHINGS (Y) _____ EASTINGS (X) _____



SURVEYOR'S CERTIFICATE
 THIS CORNER RECORD WAS PREPARED BY ME OR UNDER MY DIRECTION IN CONFORMANCE WITH THE LAND SURVEYORS ACT
 No. 18652
 Exp. 6/30/88 JUNE 16 19 87
 SIGNED Donald Thomas
 L.S. or P.S. LS 32 88



COUNTY SURVEYOR'S CERTIFICATE
 THE CORNER RECORD WAS RECEIVED _____ 19 ____
 AND EXAMINED AND FILED JUN 20 19 87
 No. 18652 BY Charles E. Murphy
 Exp. 6-30-89 TITLE Dip. Co. Surv.

SEAL

YES NO