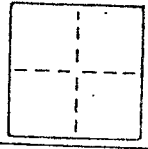


CORNER RECORD

COUNTY OF MARIN T. _____ R. _____ MERIDIAN _____ CALIFORNIA

CORNER TYPE: GOV'T. CORNER MEANDER RANCHO CONTROL OTHER

CORNER IDENTIFICATION - DATE OF VISIT FEB. 10, 1988



CORNER - LEFT AS FOUND FOUND AND TAGGED REESTABLISHED OBLITERATED CORNER REBUILT SET

PHYSICAL DESCRIPTION OF CORNER FOUND; EVIDENCE AND METHOD USED TO IDENTIFY OR REESTABLISH

LINE POINT ESTABLISHED FROM MONUMENTS ON THE CENTERLINE OF GREAT CIRCLE DRIVE AT THE ENDS OF THE COURSE S 88° 20' 00" E 99.99 FEET.

PHYSICAL DESCRIPTION OF MONUMENTS REBUILT OR PERPETUATED

SET 2" x 2" HUB & TAG L.S. 5296

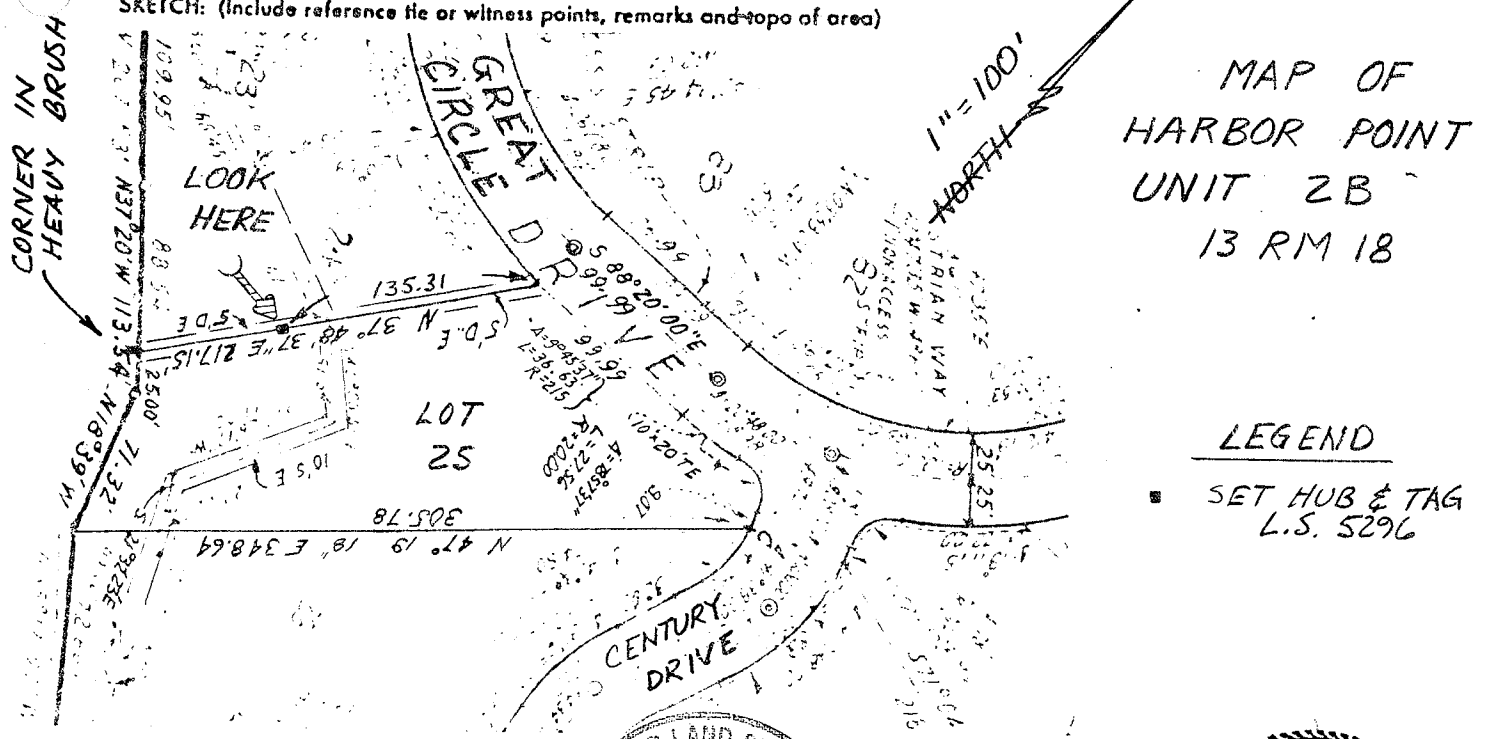
A.P. N^o 43-201-25

CALIFORNIA COORDINATE SYSTEM ORDER: FIRST SECOND THIRD

STATIONS USED: NGS (USC & GS) STATE COUNTY OTHER STATION _____ STATION _____

ZONE _____ ELEVATION _____ NORTHINGS (Y) _____ EASTINGS (X) _____

SKETCH: (Include reference tie or witness points, remarks and topo of area)



MAP OF HARBOR POINT UNIT 2B 13 RM 18

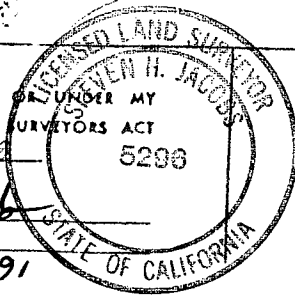
LEGEND

- SET HUB & TAG L.S. 5296

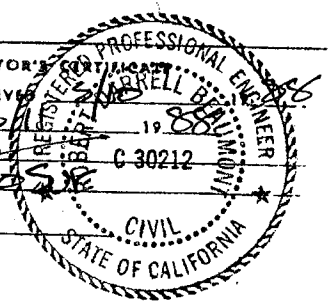
SURVEYOR'S CERTIFICATE

THIS CORNER RECORD WAS PREPARED BY ME OR UNDER MY DIRECTION IN CONFORMANCE WITH THE LAND SURVEYORS ACT ON FEBRUARY 10, 1988

SIGNED: [Signature]
L.S. or R.C.E. No. L.S. 5296
EXP. DATE 12-31-91



COUNTY SURVEYOR'S CERTIFICATE
THE CORNER RECORD WAS RECEIVED AND EXAMINED AND FILED 2/10/88 1988
BY: RDB
TITLE: DEPOSE



DOCUMENT No. _____
EX. 3-31-88