

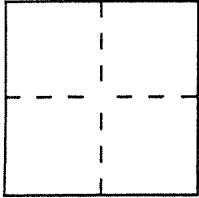
CORNER RECORD

Document Number A.P. 43-201-16

City of MILL VALLEY

County of MARIN, California

Brief Legal Description LOT 40 13 R.M.18



CORNER TYPE

Government Corner  Control   
Meander  Property   
Rancho  Other   
Date of Survey 4/06/00

COORDINATES  
(Optional)

N. \_\_\_\_\_  
E. \_\_\_\_\_  
Zone \_\_\_\_\_ Datum \_\_\_\_\_  
Elev. \_\_\_\_\_

Corner — Left as found  Found and tagged  Established  Reestablished  Rebuilt

Identification and type of corner found: Evidence used to identify or procedure used to establish or reestablish the corner:

REESTABLISHED THE PROPERTY CORNERS FROM  
THE STREET MONUMENTS SHOWN ON 13 R.M.18

A description of the physical condition of the monument as found and as set or reset: \_\_\_\_\_

SEE PAGE 2

SURVEYOR'S STATEMENT

This Corner Record was prepared by me or under my direction in conformance with the Land Surveyors' Act on JUNE 23 2000.

Signed Lawrence P. Doyle L.S. or R.C.E. Number P.L.S. 4694



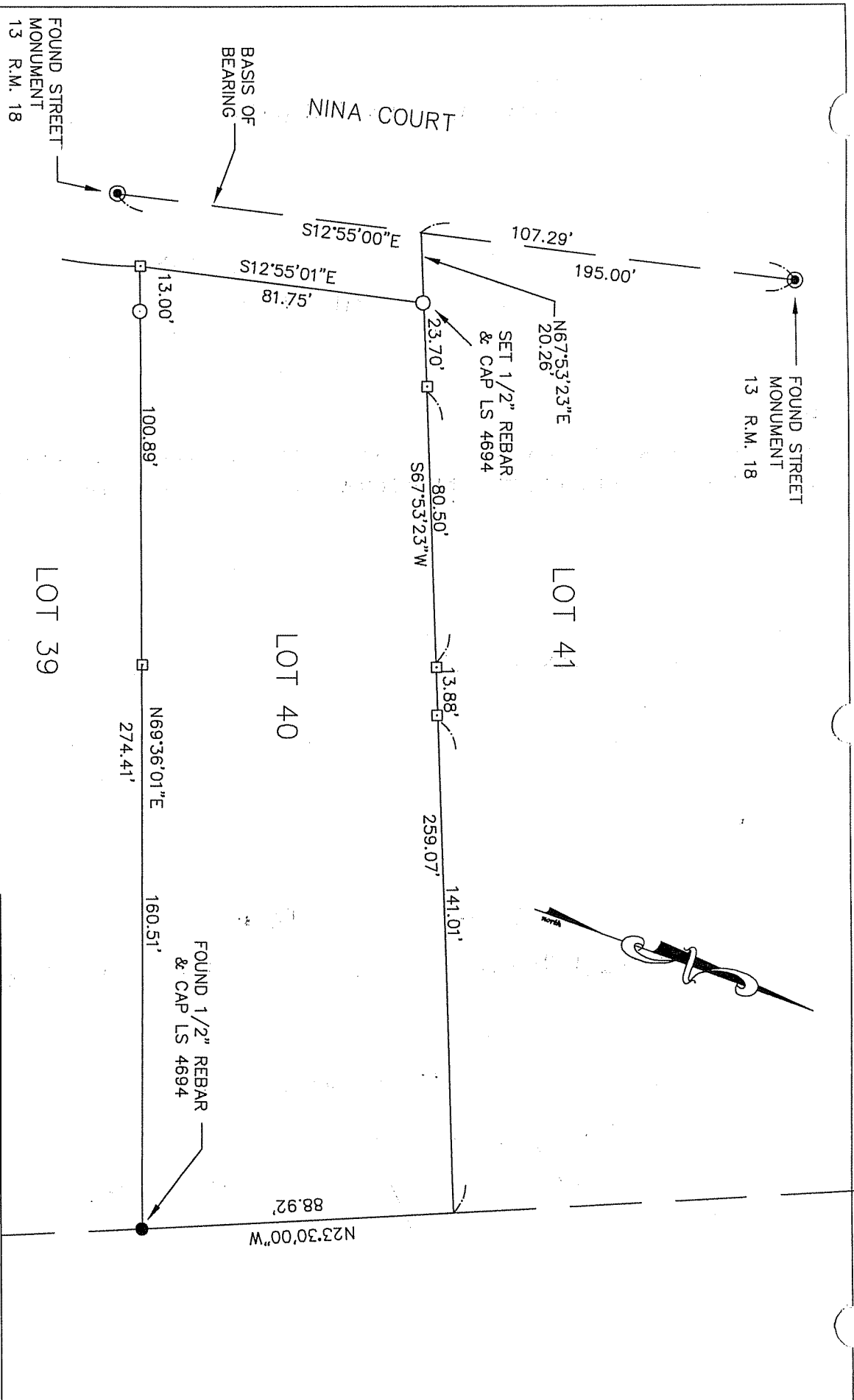
COUNTY SURVEYOR'S STATEMENT

This Corner Record was received JUNE 30, 2000 and examined and filed JULY 10, 2000.

Signed John M. Woolley Title DEPUTY



County Surveyor's Comment \_\_\_\_\_



- LEGEND**
- SET HUB & TAG  
LS 4694
  - SET NAIL & TAG  
LS 4694

<b>CORNER RECORD</b> LOT 40 13 RM 18 MARIN COUNTY CALIFORNIA	
SCALE: 1" = 40' DATE: 4/7/00	<b>LAWRENCE P. DOYLE</b> LAND SURVEYOR/CIVIL ENGINEER P.O. BOX 1609 MILL VALLEY CA 94942 (415-388-9585)
DRAWN BY: SHEET 2 OF 2	DRAWING NO. 798-00