

Marin County  
Department of Public Works

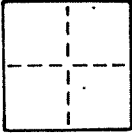
CORNER RECORD

AP Book 43, Page 19

COUNTY OF Marin T. \_\_\_\_\_ R. \_\_\_\_\_ MERIDIAN \_\_\_\_\_ CALIFORNIA

CORNER TYPE: GOVT. CORNER  MEANDER  RANCHO  CONTROL  OTHER

CORNER IDENTIFICATION - DATE OF VISIT June 19 87



Centerline P.I. on Ricardo Road in front of Lots  
195 and 196 per map of Strawberry Manor (6 Maps 63)

CORNER - LEFT AS FOUND  FOUND AND TAGGED  REESTABLISHED OBLITERATED CORNER  REBUILT

PHYSICAL DESCRIPTION OF CORNER FOUND; EVIDENCE AND METHOD USED TO IDENTIFY OR REESTABLISH

Found 7/8" squarehead bolt 2-1/2" below AC surface.  
Found at point indicated by street improvements and in  
substantial agreement with neighboring monuments.

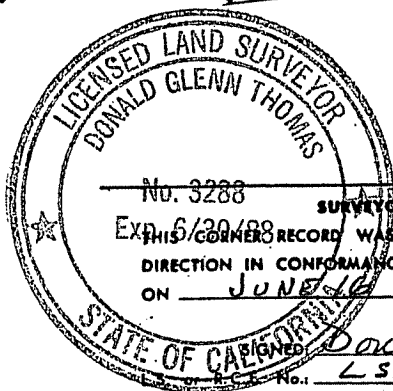
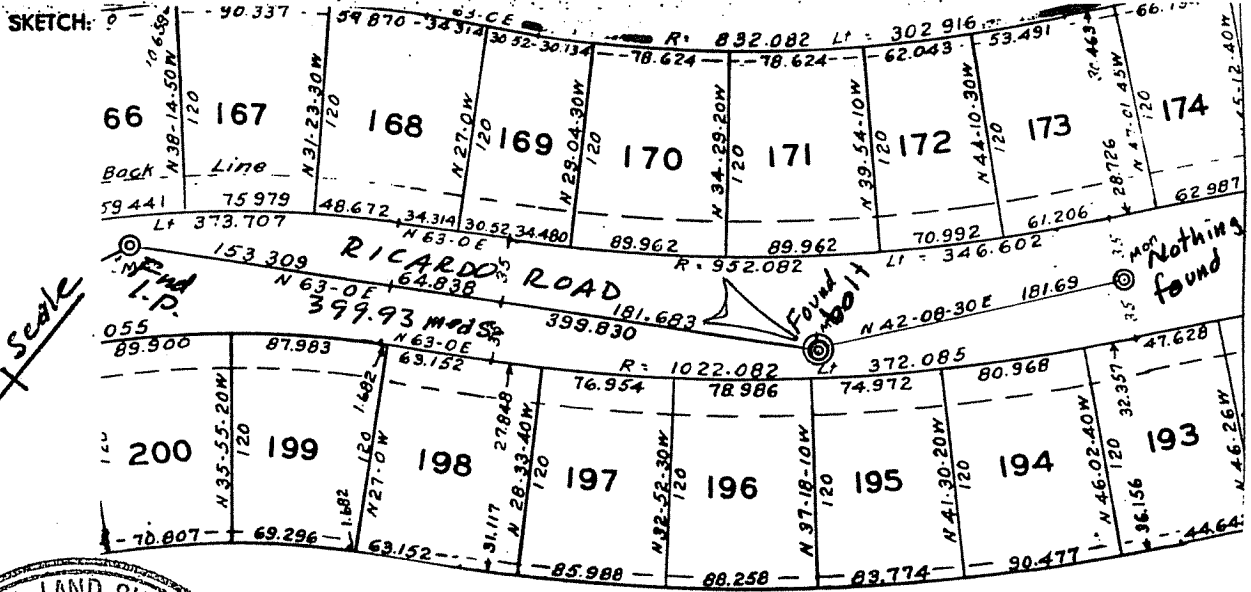
PHYSICAL DESCRIPTION OF MONUMENTS, REBUILT OR PERPETUATED

Replacing bolt with DPW bronze disk in standard street monument

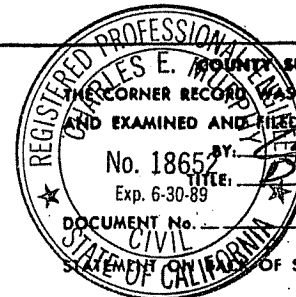
CALIFORNIA COORDINATE SYSTEM ORDER: FIRST  SECOND  THIRD

STATIONS USED: NGS (USC & GS)  STATE  COUNTY  OTHER  STATION \_\_\_\_\_ STATION \_\_\_\_\_

ZONE \_\_\_\_\_ ELEVATION \_\_\_\_\_ NORTHINGS (Y) \_\_\_\_\_ EASTINGS (X) \_\_\_\_\_

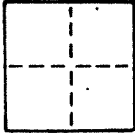


No. 3288  
SURVEYOR'S CERTIFICATE  
THIS CORNER RECORD WAS PREPARED BY ME OR UNDER MY  
DIRECTION IN CONFORMANCE WITH THE LAND SURVEYORS ACT  
ON JUNE 16 19 87  
Donald Thomas  
No. LS 3288



REGISTERED PROFESSIONAL SURVEYOR'S CERTIFICATE  
THIS CORNER RECORD WAS RECEIVED \_\_\_\_\_ 19 \_\_\_\_\_  
AND EXAMINED AND FILED 7-20 19 87  
No. 1865 BY: Charles E. Miller  
Exp. 6-30-89 TITLE: Dep. Co. SURV  
DOCUMENT No. \_\_\_\_\_  
STATE OF CALIFORNIA OF SHEET \_\_\_\_\_

COUNTY OF Marin T. \_\_\_\_\_ R. \_\_\_\_\_ MERIDIAN \_\_\_\_\_ CALIFORNIA  
 CORNER TYPE: GOVT. CORNER  MEANDER  RANCHO  CONTROL  OTHER   
 CORNER IDENTIFICATION — DATE OF VISIT June 19 87



Centerline curve point on Ricardo Road in front of Lot 185 per the map of Strawberry Manor (6 Map 63)

CORNER — LEFT AS FOUND  FOUND AND TAGGED  REESTABLISHED OBLITERATED CORNER  REBUILT

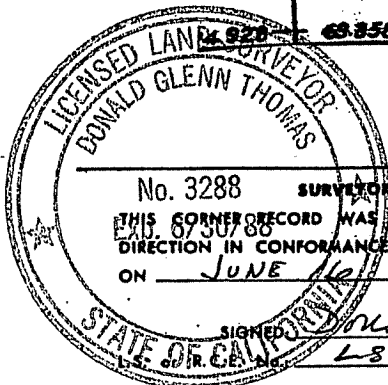
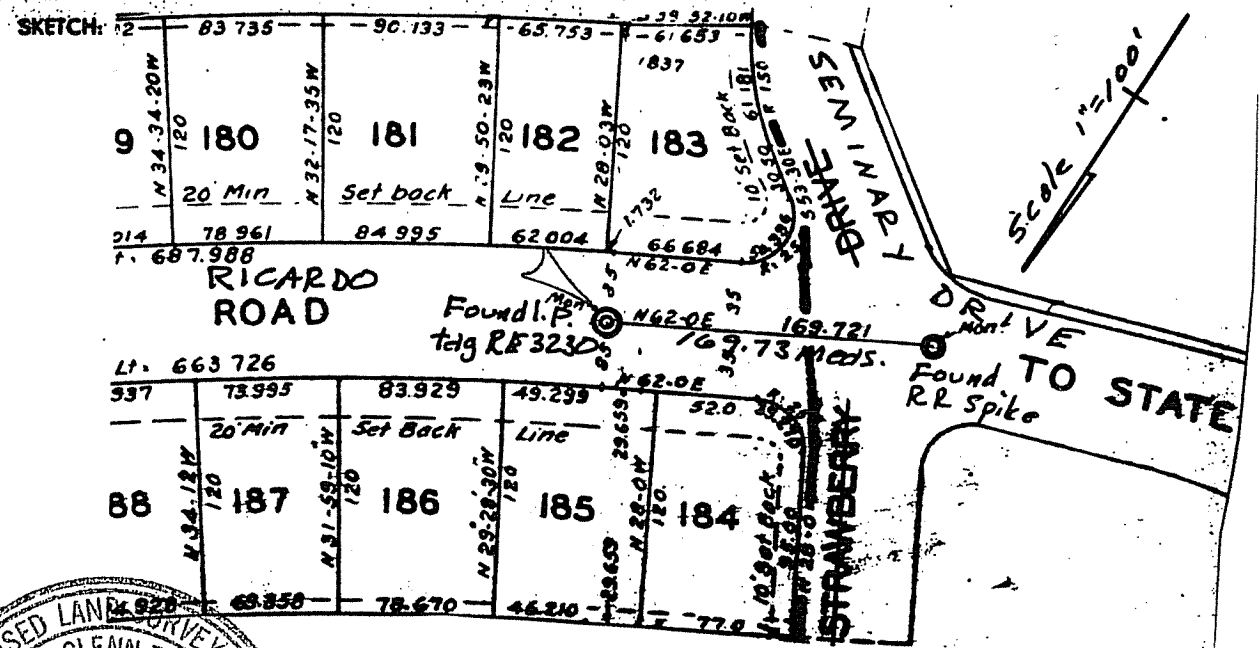
PHYSICAL DESCRIPTION OF CORNER FOUND; EVIDENCE AND METHOD USED TO IDENTIFY OR REESTABLISH

Found 3/4" I.P. and tag RE 3230 3" below AC surface.  
 Found at point indicated by street improvements and in substantial agreement with next monument.

PHYSICAL DESCRIPTION OF MONUMENTS, REBUILT OR PERPETUATED

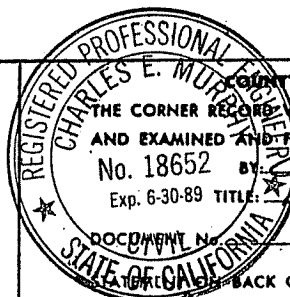
Replace I.P. with DPW bronze disk in standard street monument.

CALIFORNIA COORDINATE SYSTEM ORDER: FIRST  SECOND  THIRD   
 STATIONS USED: NGS (USC & GS)  STATE  COUNTY  OTHER  STATION \_\_\_\_\_ STATION \_\_\_\_\_  
 ZONE \_\_\_\_\_ ELEVATION \_\_\_\_\_ NORTHINGS (Y) \_\_\_\_\_ EASTINGS (X) \_\_\_\_\_



No. 3288 SURVEYOR'S CERTIFICATE  
 THIS CORNER RECORD WAS PREPARED BY ME OR UNDER MY DIRECTION IN CONFORMANCE WITH THE LAND SURVEYORS ACT ON JUNE 16 1987

SIGNED Donald Thomas  
 L.S. & S. No. LS 3288



COUNTY SURVEYOR'S CERTIFICATE  
 THE CORNER RECORD WAS RECEIVED 7 1987  
 AND EXAMINED AND FILED 7-20  
 No. 18652 BY Charles E. Murphy  
 Exp. 6-30-89 TITLE: Dep. Co. Surv

SEAL

YES  NO

