

AP# 043-171-14

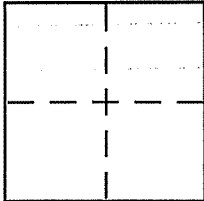
CORNER RECORD

Document Number 1992-07149

City of MILL VALLEY

County of MAZIN, California

Brief Legal Description LOT 728, 7-12M-94



CORNER TYPE

Government Corner Control
Meander Property
Rancho Other
Date of Survey 5/14/10

COORDINATES (Optional)

N. _____
E. _____
Zone _____ NAD27 NAD83
NAD83 Epoch _____
Elev. _____
Vert. Datum: NGVD29 NAVD88
Meas. Units: Metric Imperial

Corner – Left as found Found and tagged Established Reestablished Rebuilt

Identification and type of corner found: Evidence used to identify or procedure used to establish or reestablish the corner:

SEE PAGE 2

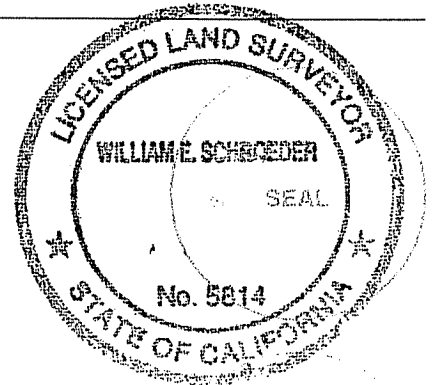
A description of the physical condition of the monument as found and as set or reset:

SEE PAGE 2

SURVEYOR'S STATEMENT

This Corner Record was prepared by me or under my direction in conformance with the Land Surveyor's Act on MAY 21, 2010

Signed William Schroeder P.L.S. or R.C.E. No. 5814



COUNTY SURVEYOR'S STATEMENT

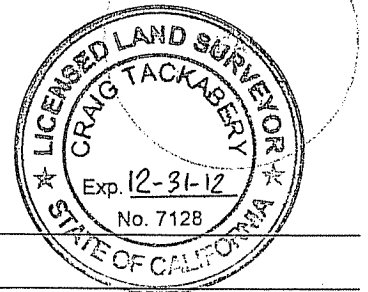
This Corner Record was received MAY 24, 2010

and examined and filed FEBRUARY 2, 2011

Signed _____ P.L.S. or R.C.E. No. 7128

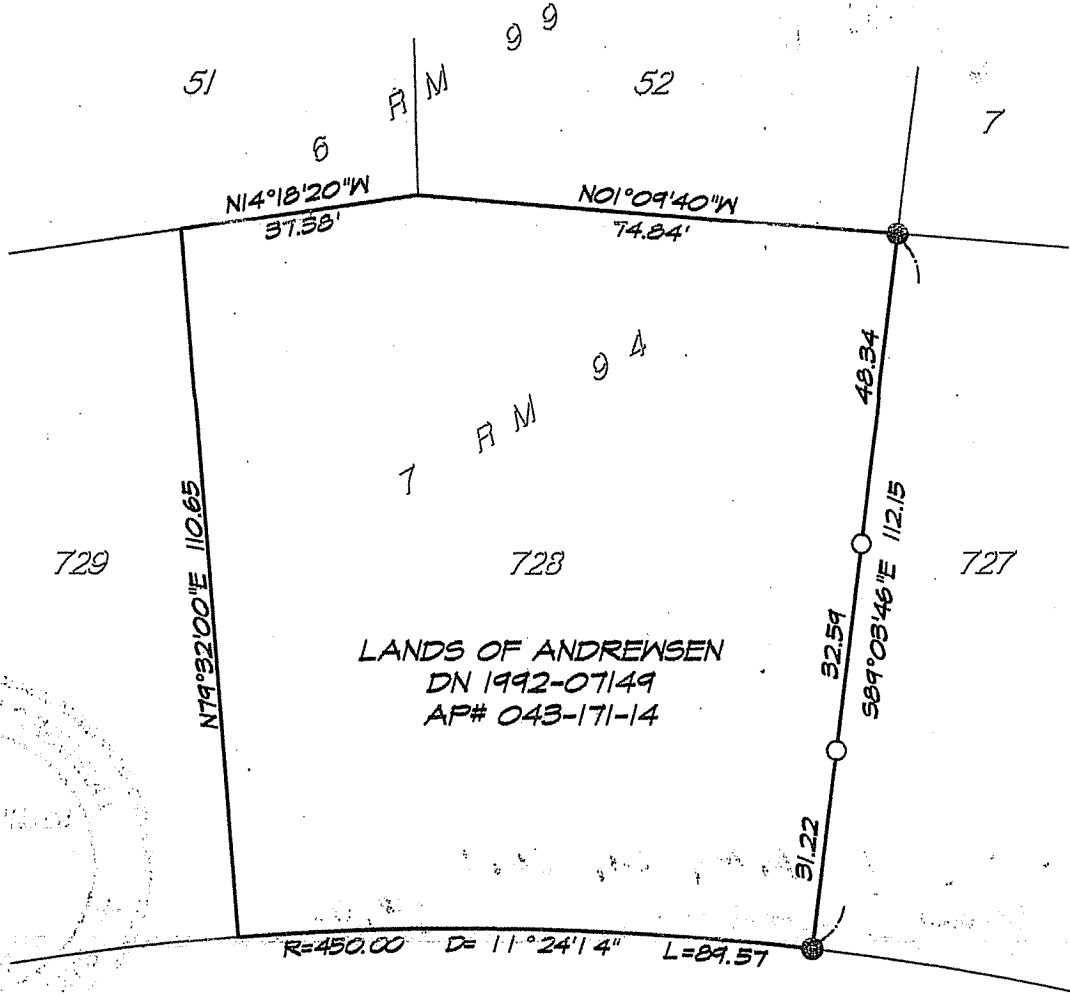
Title COUNTY SURVEYOR

County Surveyor's Comment _____



LEGEND

- = Found 3/4" Iron Pipe per Corner Record 043-171-13
- = Set 3/4" Iron Pipe with plastic cap "LS 5814"



RICHARDSON DRIVE

