

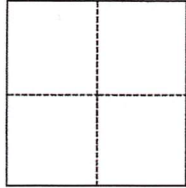
# CORNER RECORD

Agency Index DPW#20-036

Document Number APN 043-163-07

City of Mill Valley County of Marin, California

Brief Legal Description Northerly line of Lot 159, Strawberry Manor, 6 Maps 63, MCR



### CORNER TYPE

- Government Corner     Control  
 Meander                     Property  
 Rancho                          Other

Date of Survey May 28, 2020

### COORDINATES (Optional)

N. \_\_\_\_\_ E. \_\_\_\_\_

Elevation \_\_\_\_\_

Units  Metric  U.S. Survey Foot

Horizontal Datum \_\_\_\_\_

Zone \_\_\_\_\_ Epoch Date \_\_\_\_\_

Vertical Datum \_\_\_\_\_

Complies with Public Resources Code §§8801-8819

Complies with Public Resources Code §§8890-8902

PLS Act Ref.:  8765(d)     8771     8773     Other:

Corner/Monument:  Left as found     Established     Rebuilt     Pre-Construction  
 Found and tagged     Reestablished     Referenced     Post-Construction

Narrative of corner identified and monument as found, set, reset, replaced, or removed:

See sheet #2 for description(s):

Found centerline monuments in matching record data. Set rebar and cap at each end of lot line and a brass nail and tag in top of encroaching wood fence at 1.50 feet from lot line, as shown on sheet 2.

### SURVEYOR'S STATEMENT

This Corner Record was prepared by me or under my direction in conformance with

the Professional Land Surveyors' Act on June 3, 2020

Signed [Signature] P.L.S. or R.C.E. No. 7950



### COUNTY SURVEYOR'S STATEMENT

This Corner Record was received 06/22/2020

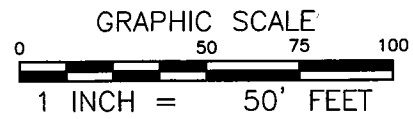
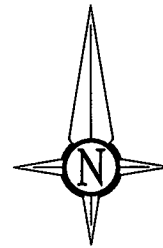
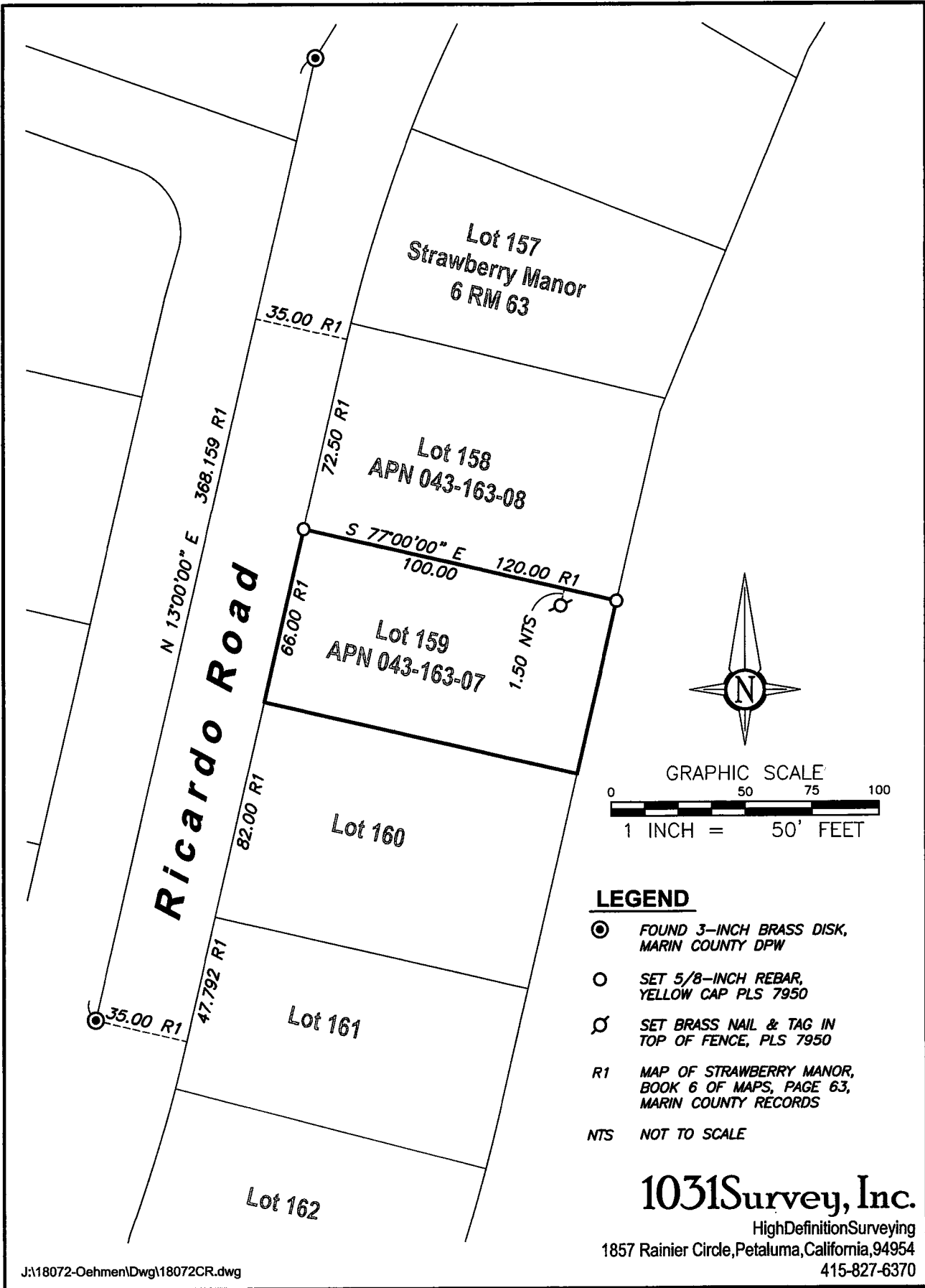
and examined and filed 11/30/2020

Signed [Signature] P.L.S. or R.C.E. No. 9292

Title DEPUTY C.S.

County Surveyor's Comment





**LEGEND**

- ⊙ FOUND 3-INCH BRASS DISK, MARIN COUNTY DPW
- SET 5/8-INCH REBAR, YELLOW CAP PLS 7950
- ⊘ SET BRASS NAIL & TAG IN TOP OF FENCE, PLS 7950
- R1 MAP OF STRAWBERRY MANOR, BOOK 6 OF MAPS, PAGE 63, MARIN COUNTY RECORDS
- NTS NOT TO SCALE

**1031Survey, Inc.**

HighDefinitionSurveying  
1857 Rainier Circle, Petaluma, California, 94954  
415-827-6370

J:\18072-Oehmen\DWG\18072CR.dwg