

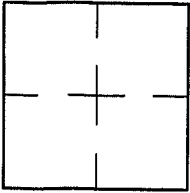
CORNER RECORD

Document Number A.P.# 043-161-10

City of MILL VALLEY

County of MARIN, California

Brief Legal Description LOT 212 6 R.M. 63



CORNER TYPE

COORDINATES (Optional)

Government Corner Control

Meander Property

Rancho Other

Date of Survey 6/29/04

N. _____
 E. _____
 Zone _____ NAD27 NAD83
 NAD83 Epoch _____
 Elev. _____
 Vert. Datum: NGVD29 NAVD88
 Meas. Units: Metric Imperial

Corner- Left as found Found and tagged Established Reestablished Rebuilt

Identification and type of corner found: Evidence used to identify or procedure used to establish or reestablish the corner:

REESTABLISHED PROPERTY CORNER FROM STREET MONUMENTS PER 6 R.M. 63

A description of the physical condition of the monument as found and as set or reset: SEE SHEET 2.

SURVEYOR'S STATEMENT

This Corner Record was prepared by me or under my direction in conformance with

the Land Surveyor's Act on JUNE 29 2004

Signed Lawrence P. Doyle P.L.S. or R.C.E. No. P.L.S. 4694



COUNTY SURVEYOR'S STATEMENT

This Corner Record was received JULY 2, 2004

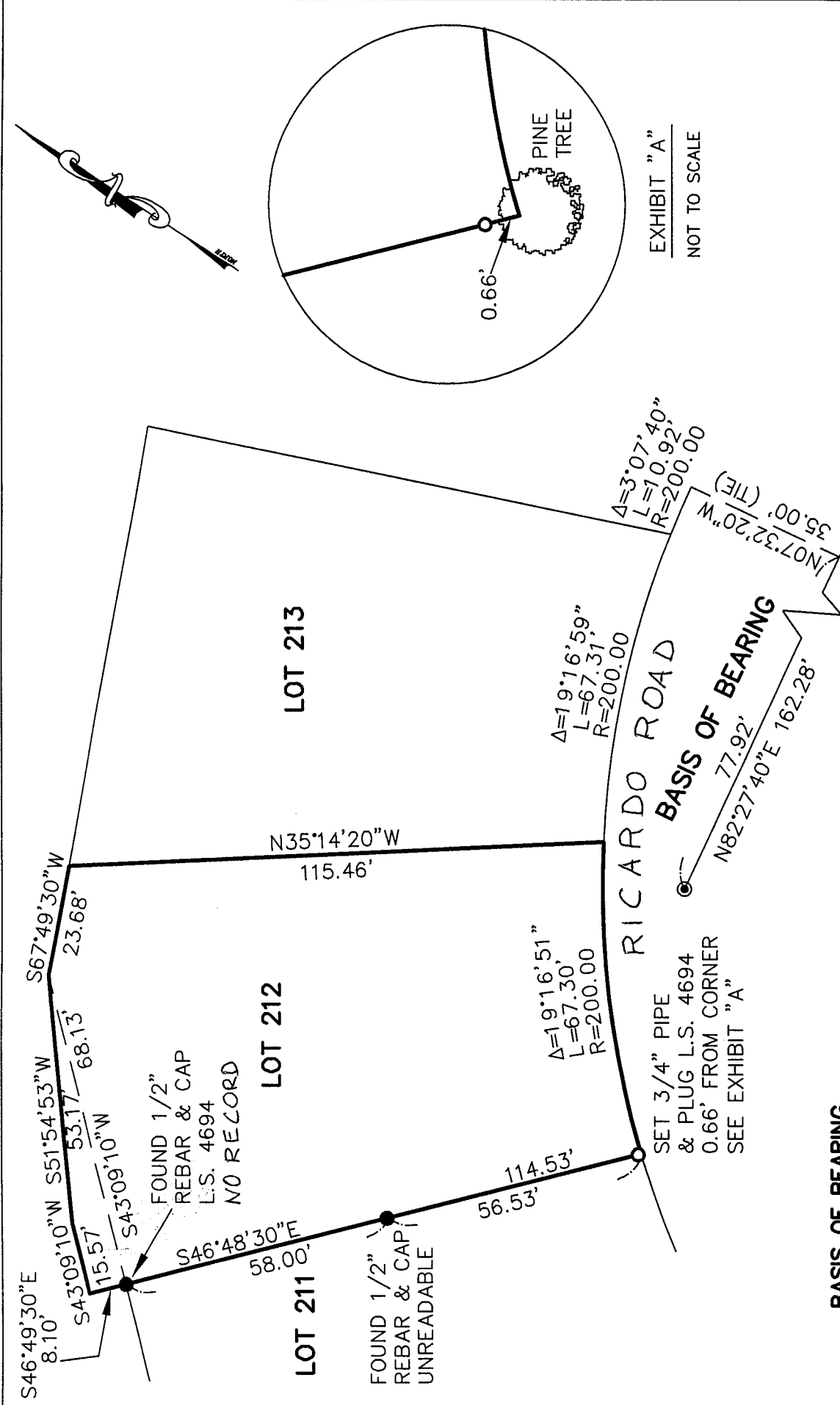
and examined and filed JULY 15, 2004

Signed [Signature] P.L.S. or R.C.E. No. 7128

Title COUNTY SURVEYOR

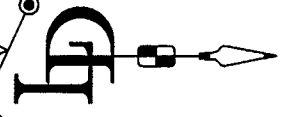
County Surveyor's Comment _____





BASIS OF BEARING

THE BASIS OF BEARING FOR THIS SURVEY IS BETWEEN FOUND STREET MONUMENTS PER 6 R.M. 63



CORNER RECORD	
LOT 212	6 R.M. 63
MILL VALLEY	MARIN COUNTY CALIFORNIA
SCALE: 1" = 30'	DRAWN BY: SHEET 2 OF 2
DATE: 6/29/04	LAWRENCE P. DOYLE
LAND SURVEYOR/CIVIL ENGINEER	
P.O. BOX 1609 MILL VALLEY CA 94942 (415-388-9585)	
DRAWING NO. 1282-04	

EXHIBIT "A"
NOT TO SCALE

