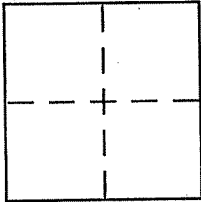


CORNER RECORD

Document Number APN: 043-161-07
County of Marin, California

City of Mill Valley

Brief Legal Description Lot 208 per 6 M 63



CORNER TYPE

Government Corner Control
Meander Property
Rancho Other
Date of Survey 6-1-12

COORDINATES (Optional)

N. _____
E. _____
Zone _____ NAD27 NAD83
NAD83 Epoch _____
Elev. _____
Vert. Datum: NGVD29 NAVD88
Meas. Units: Metric Imperial

Corner - Left as found Found and tagged Established Reestablished Rebuilt

Identification and type of corner found: Evidence used to identify or procedure used to establish or reestablish the corner:

See page 2 of 2.

A description of the physical condition of the monument as found and as set or reset:

See page 2 of 2.

SURVEYOR'S STATEMENT

This Corner Record was prepared by me or under my direction in conformance with the Land Surveyor's Act on 9/6 2012

Signed [Signature] P.L.S or R.C.E. No. 6784



COUNTY SURVEYOR'S STATEMENT

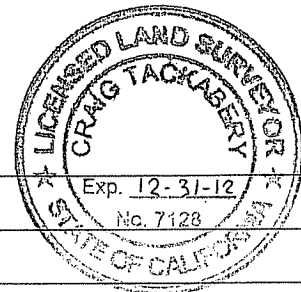
This Corner Record was received SEPTEMBER 26, 2012

and examined and filed OCTOBER 23, 2012

Signed [Signature] P.L.S or R.C.E. No. 7128

Title COUNTY SURVEYOR

County Surveyor's Comment _____



REFERENCE

"MAP OF STRAWBERRY MANOR"
 FILED FOR RECORD JULY 8, 1948 IN
 VOLUME 6 OF MAPS, AT PAGE 63,
 MARIN COUNTY RECORDS.

APN: 043-420-09

22

APN: 043-420-08

21

APN: 043-161-07

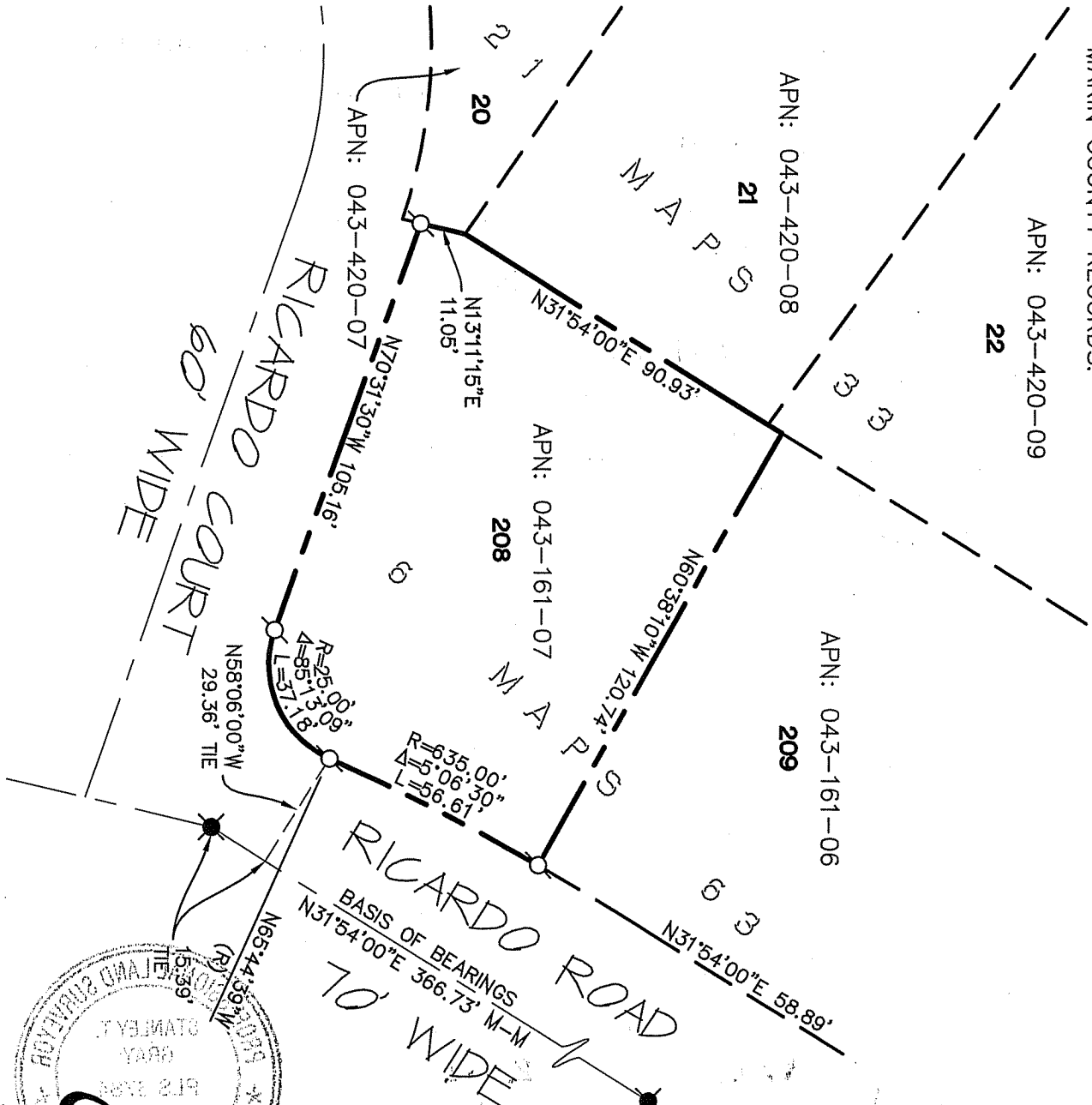
208

APN: 043-161-06

209

RICARDO COURT
 60' WIDE

RICARDO ROAD
 70' WIDE

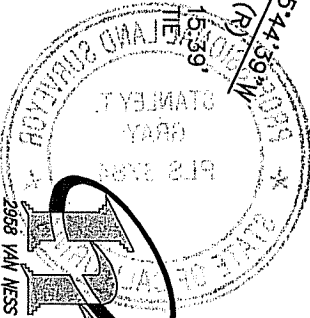
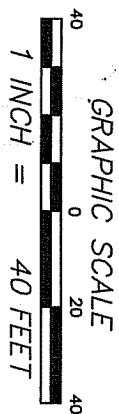
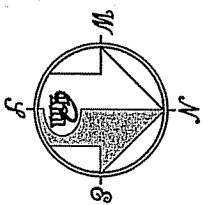


BASIS OF BEARINGS
 N31°54'00"E 366.73' M-M

LEGEND

- ✱ FOUND STANDARD STREET MONUMENT PER 6 MAPS 63
- ♂ SET 5/8" REBAR WITH CAP, PLS 6784
- (R) RADIAL

NOTE:
 RECORD=MEASURED



CORNER RECORD

MERIDIAN SURVEYING
 ENGINEERING, INC.

2988 VAN NESS AVENUE
 SAN FRANCISCO, CA 94109
 (415) 440-4131
 info@meridiansurvey.com

12039
 777 GRAND AVENUE, SUITE 202
 SAN RAFAEL, CA 94901
 (415) 456-6450