

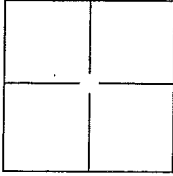
CORNER RECORD

Document Number A.P.N. 043-151-19 & -20

City of Strawberry

County of Marin, California

Brief Legal Description Lands of D.M.Jacobson & Sons, Inc. per Doc. No. 2000-020597. Parcel as shown on 20 OS 100



CORNER TYPE

Government Corner Control
 Meander Property
 Rancho Other

Date of Survey 13 May 2013

COORDINATES(Optional)

N. _____
 E. _____
 Zone _____ NAD27 NAD83
 NAD83 Epoch _____
 Elev. _____
 Vert. Datum: NGVD29 NADV88
 Meas. Units: Metric Imperial

Corner - Left as found Found and tagged Established Reestablished Rebuilt

Identification and type of corner found: Evidence used to identify or procedure used to establish or reestablish the corner:

Found Standard Street Monument per 20 OS 100 (2) and Found 3/4" Iron Pipe and yellow cap, L.S. 3971 (3).

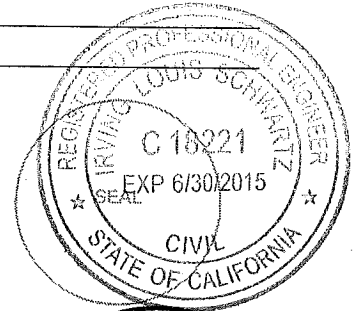
A description of the physical condition of the monument as found and as set or reset: _____

Set Brass Nail & Brass Tag "RCE 18221" on top of fence at southeasterly corner, See Exhibit "A".

SURVEYORS STATEMENT

This Corner Record was prepared by me or under my direction in conformance with the Land Surveyors Act on JULY 9 2013

Signed [Signature] P.L.S. or R.C.E. No.: 18221



COUNTY SURVEYOR'S STATEMENT

This Corner Record was received JULY 10 2013 and examined and filed AUGUST 1 2013

Signed [Signature] P.L.S. or R.C.E. No.: 7821

Title DEPUTY

County Surveyor's Comment _____



EXISTING EASEMENT TABLE

- ① 15' SANITARY SEWER AND WATERLINE EASEMENT PER 20 OS 100
- ② WATERLINE EASEMENT PER 20 OS 100
- ③ CENTERLINE 5' PG&E EASEMENT PER 20 OS 100

CURVE TABLE			
LINE	LENGTH	RADIUS	DELTA
C1	43.66'	100.00	25°00'49"
C2	126.84'	425.00	17°06'00"
C3	45.00'	425.00	06°04'00"

LINE TABLE		
LINE	BEARING	LENGTH
L1	N02°28'00"W	269.32'
L2	N09°50'00"E	214.27'
L3	S82°00'00"E	118.10'
L4	S26°55'00"W	88.00'
L5	S09°49'00"W	85.66'
L6	S03°45'00"W	104.38'
L7	N80°37'50"W	8.16'

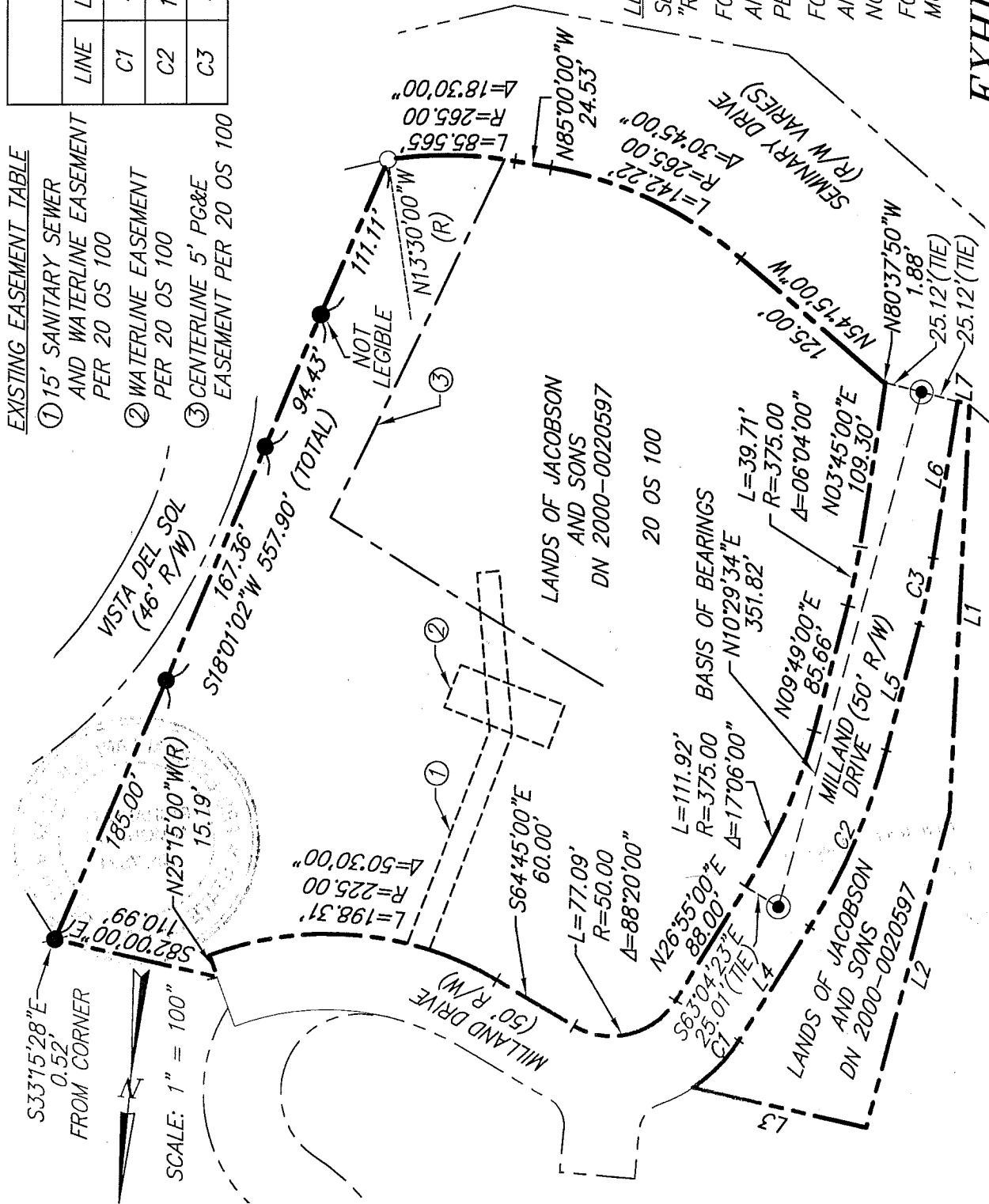
- LEGEND**
- SET BRASS NAIL AND TAG "R.C.E. 18221"
 - FOUND 3/4" IRON PIPE AND YELLOW CAP, LS 3971, PER 20 OS 100
 - FOUND 3/4" IRON PIPE AND YELLOW CAP, RCE 27572 NO RECORD
 - FOUND STANDARD STREET MONUMENT PER 20 OS 100

EXHIBIT A



ILS ASSOCIATES, INC.®
 CIVIL ENGINEERING AND LAND SURVEYING

70 GALLUP DRIVE, SUITE A NOVATO, CA 94948-0777 (415) 898-8200 FAX (415) 898-2783



NOTE:

ALL DIMENSIONS AND BEARINGS SHOWN HEREON ARE PER 20 OS 100.

DATE: 05/24/2013
 FILE: 8771CR.dwg
 PAGE 2 OF 2

A.P.N. 043-151-19 AND 20