

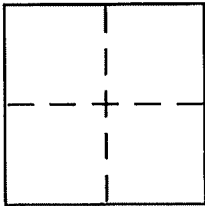
CORNER RECORD

Document Number APN 043-123-07

City of MILL VALLEY

County of MARIN, California

Brief Legal Description LOT 54 OF 13/M/18



CORNER TYPE

Government Corner Control
Meander Property
Rancho Other
Date of Survey _____

COORDINATES (Optional)

N. _____
E. _____
Zone _____ NAD27 NAD83
NAD83 Epoch _____
Elev. _____
Vert. Datum: NGVD29 NAVD88
Meas. Units: Metric Imperial

Corner - Left as found Found and tagged Established Reestablished Rebuilt

Identification and type of corner found: Evidence used to identify or procedure used to establish or reestablish the corner:

SEE SHEET 2

A description of the physical condition of the monument as found and as set or reset:

SEE SHEET 2

SURVEYOR'S STATEMENT

This Corner Record was prepared by me or under my direction in conformance with the Land Surveyor's Act on JULY 5 2001.

Signed _____ P.L.S. or R.C.E. No. 6784

COUNTY SURVEYOR'S STATEMENT

This Corner Record was received JULY 9, 2001

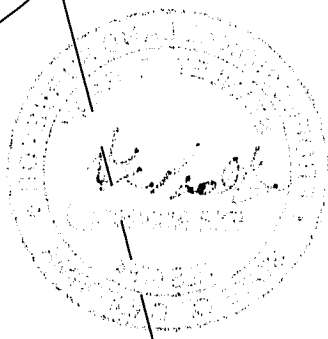
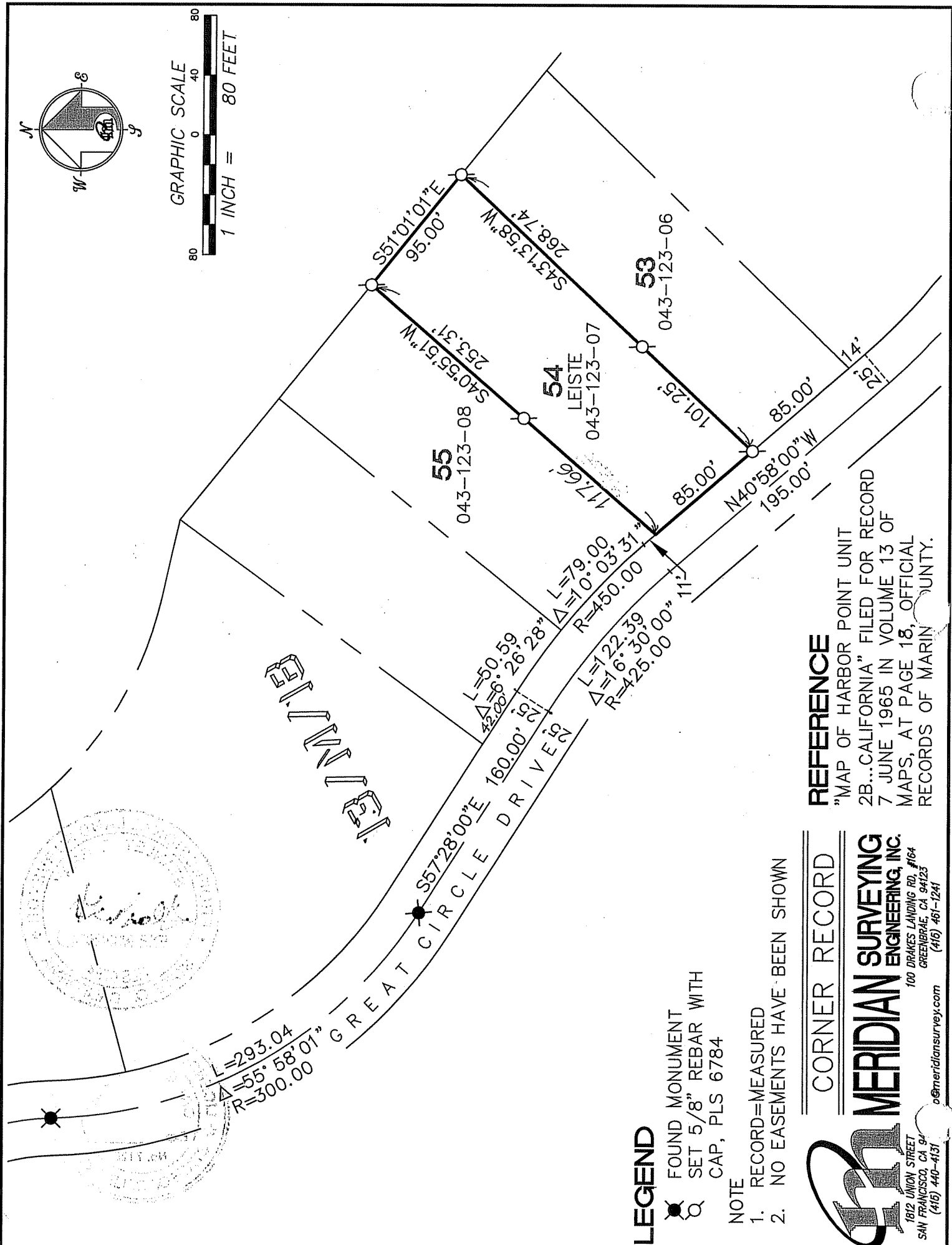
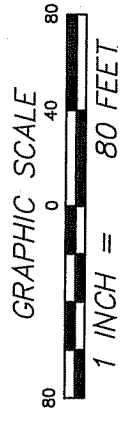
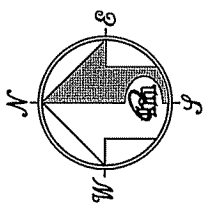
and examined and filed _____

Signed [Signature] P.L.S. or R.C.E. No. 7128

Title DEPUTY

County Surveyor's Comment _____





1313

MERIDIAN SURVEYING ENGINEERING, INC.

1812 UNION STREET
SAN FRANCISCO, CA 94133
(415) 440-4131

100 DRAKES LANDING RD. #164
GREENBRAE, CA 94123
(415) 461-1241

o@meridiansurveying.com