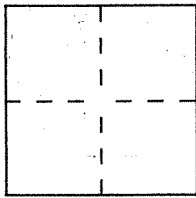


# CORNER RECORD

Document Number APN 43-122-15&27

City of Mill Valley County of Marin, California

Brief Legal Description Lot 86 Map of Harbor Point Unit 2B (13 MAPS 18)



### CORNER TYPE

Government Corner  Control   
 Meander  Property   
 Rancho  Other   
 Date of Survey 11/03, 04/1999

### COORDINATES (Optional)

N. \_\_\_\_\_  
 E. \_\_\_\_\_  
 Zone \_\_\_\_\_ Datum \_\_\_\_\_  
 Elev. \_\_\_\_\_

Corner — Left as found  Found and tagged  Established  Reestablished  Rebuilt

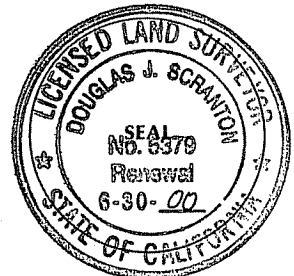
Identification and type of corner found: Evidence used to identify or procedure used to establish or reestablish the corner:  
Reestablished from existing standard street monuments on Topside Way shown on the Map of Harbor Point Unit 2B (13 MAPS 18) the lot line common to Lot 85 & 86 upon said referred map. Refer to sketch on reverse side for the location of the street monuments utilized for this survey and for the location of the points set per this survey.

A description of the physical condition of the monument as found and as set or reset: Set one half inch rebar with plastic yellow cap affixed to top of rebar; cap embossed with PLS 5379, Scranton, and driven flush with existing ground grade.

### SURVEYOR'S STATEMENT

This Corner Record was prepared by me or under my direction in conformance with the Land Surveyors' Act on November 5th 19 99.

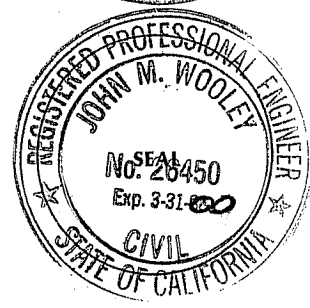
Signed Douglas J. Scranton L.S. or R.C.E. Number PLS 5379  
 renewal 6/30/00



### COUNTY SURVEYOR'S STATEMENT

This Corner Record was received NOVEMBER 9 19 99 and examined and filed NOVEMBER 10 19 99.

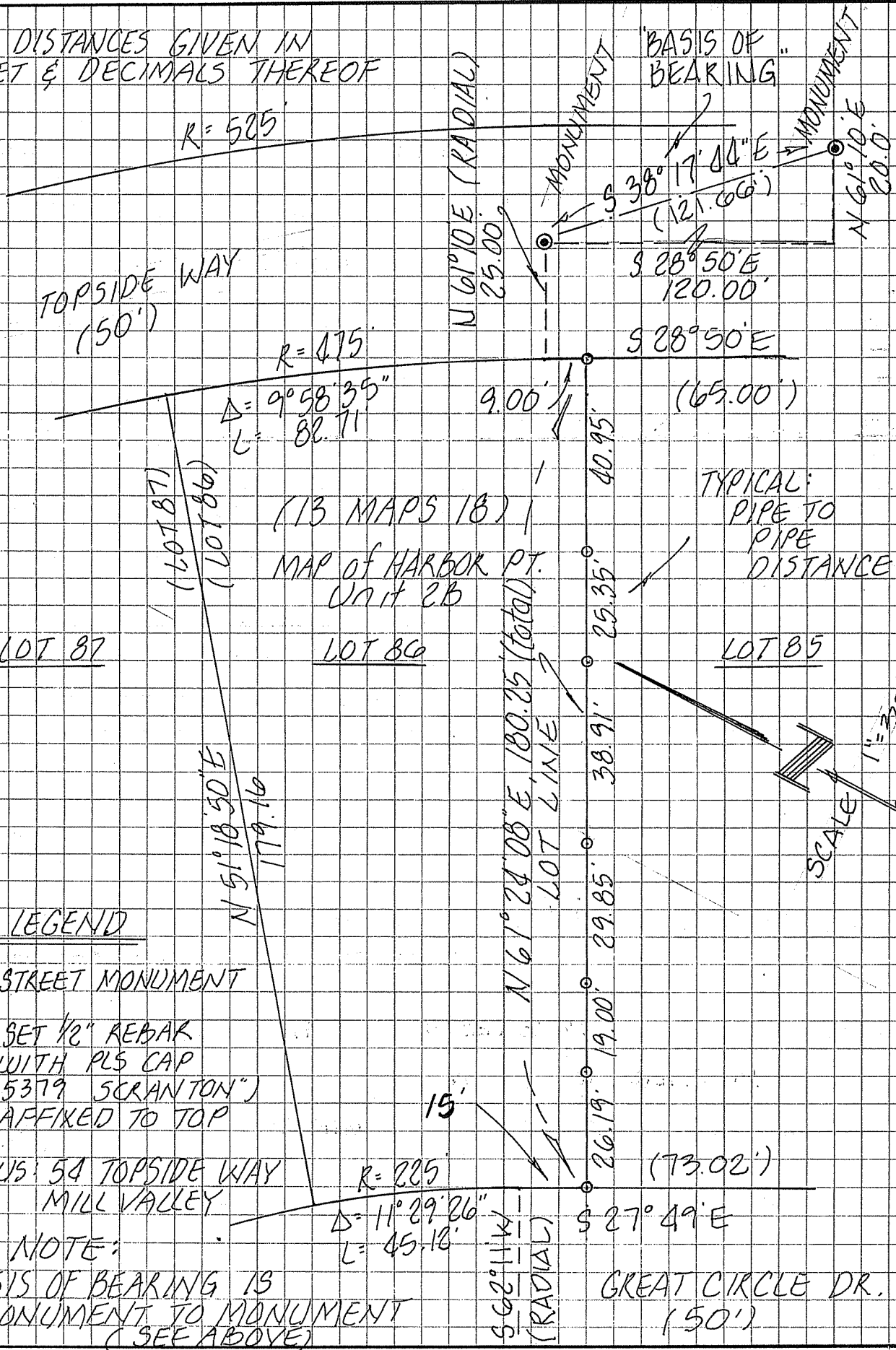
Signed John M. Wooley Title DEPUTY



County Surveyor's Comment \_\_\_\_\_

PREPARED BY: DJ SCRANTON SURVEYING 845 OLIVE AVENUE SUITE 208 NOVATO, CA 94945 897-2663

ALL DISTANCES GIVEN IN FEET & DECIMALS THEREOF



LEGEND

- STREET MONUMENT
- SET 1/2" REBAR WITH PLS CAP ("5379 SCRANTON") AFFIXED TO TOP

SITUS: 54 TOPSIDE WAY  
MILL VALLEY

NOTE:  
BASIS OF BEARING IS  
MONUMENT TO MONUMENT  
(SEE ABOVE)