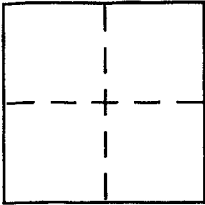


CORNER RECORD

Document Number APN 043-111-10
County of MARIN, California

City of MILL VALLEY
Brief Legal Description Lot 243, 6 Maps 58



CORNER TYPE

Government Corner Control
Meander Property
Rancho Other
Date of Survey 09-22-04

COORDINATES (Optional)

N. _____
E. _____
Zone _____ NAD27 NAD83
NAD83 Epoch _____
Elev. _____
Vert. Datum: NGVD29 NAVD88
Meas. Units: Metric Imperial

Corner - Left as found Found and tagged Established Reestablished Rebuilt

Identification and type of corner found: Evidence used to identify or procedure used to establish or reestablish the corner:

See Page 2 of 2

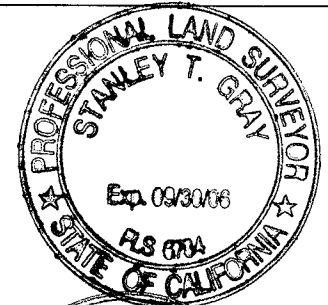
A description of the physical condition of the monument as found and as set or reset:

See Page 2 of 2

SURVEYOR'S STATEMENT

This Corner Record was prepared by me or under my direction in conformance with the Land Surveyor's Act on 11/9/04

Signed [Signature] P.L.S or R.C.E. No. 6784



COUNTY SURVEYOR'S STATEMENT

This Corner Record was received NOVEMBER 9, 2004

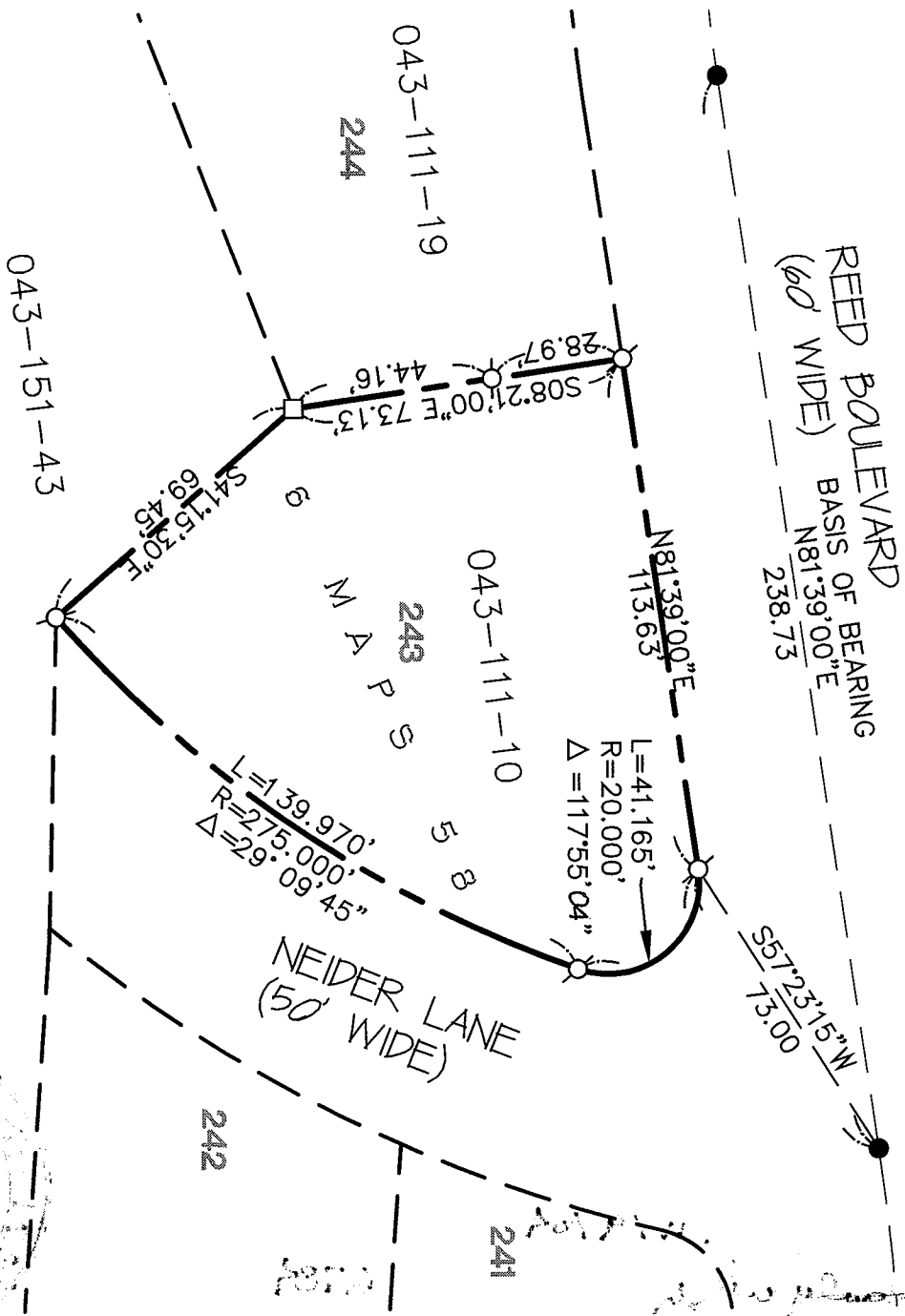
and examined and filed NOVEMBER 29, 2004

Signed [Signature] P.L.S or R.C.E. No. 7128

Title COUNTY RECORDER



County Surveyor's Comment _____



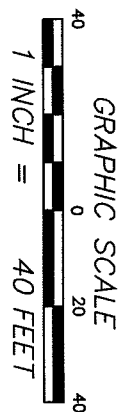
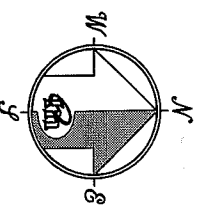
REED BOULEVARD
BASIS OF BEARING
(60' WIDE)
N81°39'00"E
238.73

S57°23'15"W
73.00

L=41.165'
R=20.000'
Δ=117°55'04"

NEIDER LANE
(50' WIDE)

L=139.970'
R=275.000'
Δ=29°09'45"



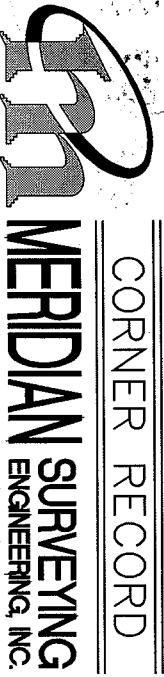
REFERENCE

"MAP OF STRAWBERRY HEIGHTS
SUBDIVISION THREE..." MARIN
COUNTY, CALIFORNIA" FILED FOR
RECORD APRIL 26, 1948 IN VOLUME
6 OF MAPS, AT PAGE 58, MARIN
COUNTY RECORDS.

LEGEND

- FOUND CITY MONUMENT
 - SET 5/8" REBAR WITH CAP, PLS 6784
 - SET NAIL & TACK IN FENCE WITH BRASS TAG, PLS 6784
- NOTE
RECORD=MEASURED

CORNER RECORD



MERIDIAN SURVEYING ENGINEERING, INC.
1812 UNION STREET
SAN FRANCISCO, CA 94123
777 GRAND AVENUE, SUITE 202
SAN RAFAEL, CA 94901
04089
(415) 440-4131
Info@meridiansurvey.com
(415) 456-5450