

# CORNER RECORD

Document Number APN 043-111-02

City of MILL VALLEY County of Marin California.

Brief Legal Description: LOT 250 STRAWBERRY HTS. SUB3 R.M. BK6 P 58 MARIN CO RCDS.


CORNER TYPE:

Government Corner  Control   
 Meander  Property   
 Rancho  Other   
 Date of Survey \_\_\_\_\_

COORDINATES

[Optional]  
 N> \_\_\_\_\_  
 E> \_\_\_\_\_  
 Zone \_\_\_\_\_ Datum \_\_\_\_\_  
 Elev> \_\_\_\_\_

CORNER: ----- Left as found  Found & Tagged  Established  Reestablished  Rebuilt

Identification & Type of Corner Found: Evidence used to identify or procedure used to establish or reestablish the corner

FOUND STD WELL MONUMENTS PER SUBDIVISION MAP.

A description of the physical condition of the monument as found and as set or reset:

Original corners not found: Set points as shown on reverse.

### SURVEYOR'S STATEMENT

The corner record was prepared by me or under my direction in conformance with the Land Surveyors' Act on NOVEMBER 2002

Signed: Douglas J. Matteson LS or RCE # C 18200



### COUNTY SURVEYORS STATEMENT

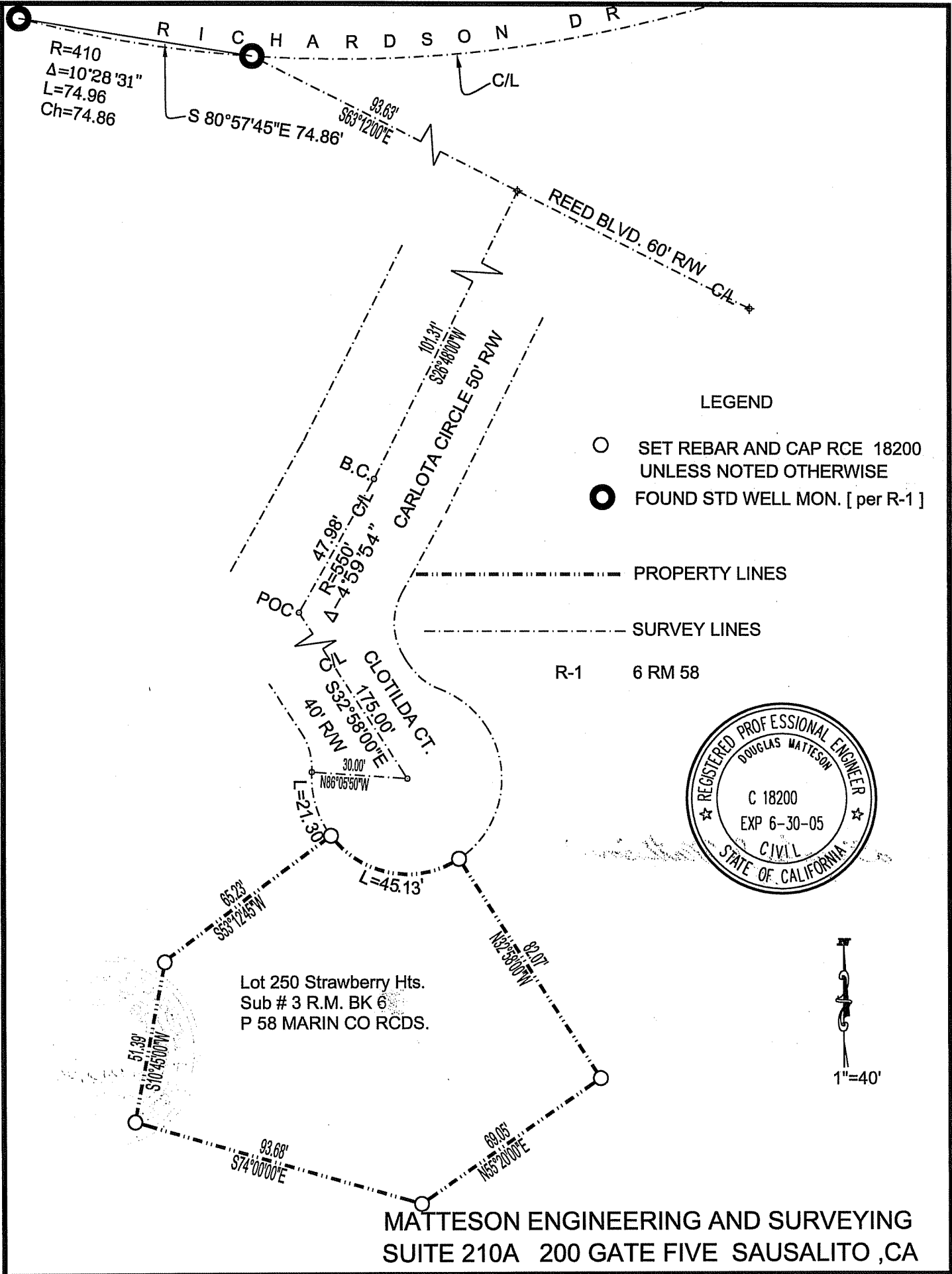
This corner record was received: DECEMBER 16, 2002

and filed DECEMBER 17, 2002

Signed Craig Tackabery Title: DEPUTY



COUNTY SURVEYOR'S COMMENT \_\_\_\_\_



MATTESON ENGINEERING AND SURVEYING  
 SUITE 210A 200 GATE FIVE SAUSALITO, CA