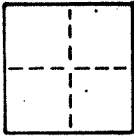


Marin County
Department of Public Works

CORNER RECORD

AP Book 43, Page 11

COUNTY OF Marin T. 1 R. 1 MERIDIAN CALIFORNIA
 CORNER TYPE: GOVT. CORNER MEANDER RANCHO June 87 CONTROL OTHER
 CORNER IDENTIFICATION — DATE OF VISIT _____ 1987



Centerline curve point on Reed Boulevard in front of Lot 247 of the Map of Strawberry Heights Subdivision Three (6 Mpas 58)

CORNER — LEFT AS FOUND FOUND AND TAGGED REESTABLISHED OBLITERATED CORNER REBUILT

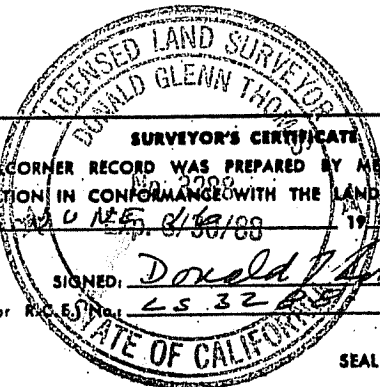
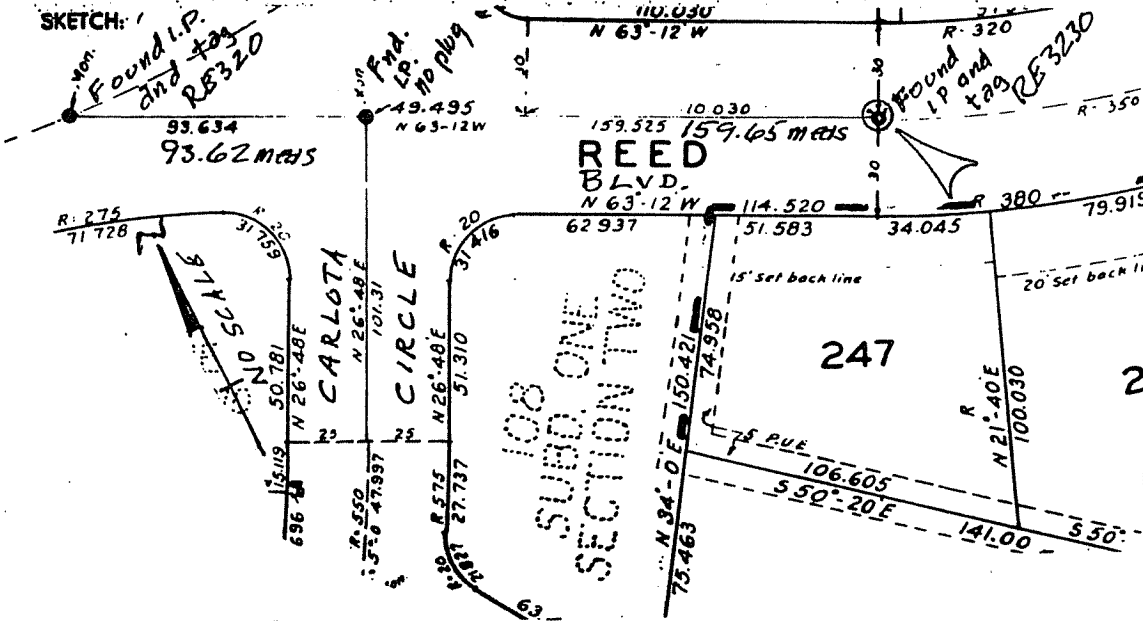
PHYSICAL DESCRIPTION OF CORNER FOUND; EVIDENCE AND METHOD USED TO IDENTIFY OR REESTABLISH

Found I.P. and tag RE3230 2-1/2" below AC surface.
Found at point indicated by street improvements and in substantial agreement with neighboring monuments.

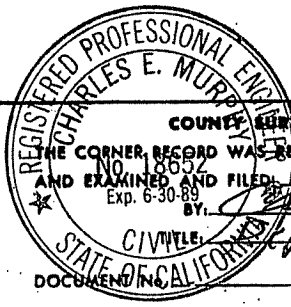
PHYSICAL DESCRIPTION OF MONUMENTS, REBUILT OR PERPETUATED

Replaced iron pipe with DPW bronze disk in standard street monument

CALIFORNIA COORDINATE SYSTEM ORDER: FIRST SECOND THIRD
 STATIONS USED: NGS (USC & GS) STATE COUNTY OTHER STATION _____ STATION _____
 ZONE _____ ELEVATION _____ NORTHINGS (Y) _____ EASTINGS (X) _____



SURVEYOR'S CERTIFICATE
 THIS CORNER RECORD WAS PREPARED BY ME OR UNDER MY DIRECTION IN CONFORMANCE WITH THE LAND SURVEYORS ACT ON 22 0 12 87 8/19/88 1987
 SIGNED: Donald Glenn Thomsen
 L.S. or R.S. No. 2532

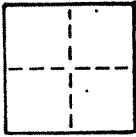


COUNTY SURVEYOR'S CERTIFICATE
 THE CORNER RECORD WAS RECEIVED _____ 19_____
 AND EXAMINED AND FILED 7-20 1987
 Exp. 6-30-89
 BY: Charles E. Murrin
 CIVIL ENGINEER
 STATE OF CALIFORNIA
 DOCUMENT NO. _____

STATEMENT ON BACK OF SHEET YES NO

CORNER RECORD

COUNTY OF Marin T. _____ R. _____ MERIDIAN _____ CALIFORNIA
 CORNER TYPE: GOVT. CORNER MEANDER RANCHO CONTROL OTHER
 CORNER IDENTIFICATION — DATE OF VISIT June 1987



Centerline curve point on Reed Boulevard in front of Lot 244 of the Map of Strawberry Heights Subdivision Three (6 Maps 58)

CORNER — LEFT AS FOUND FOUND AND TAGGED REESTABLISHED OBLITERATED CORNER REBUILT

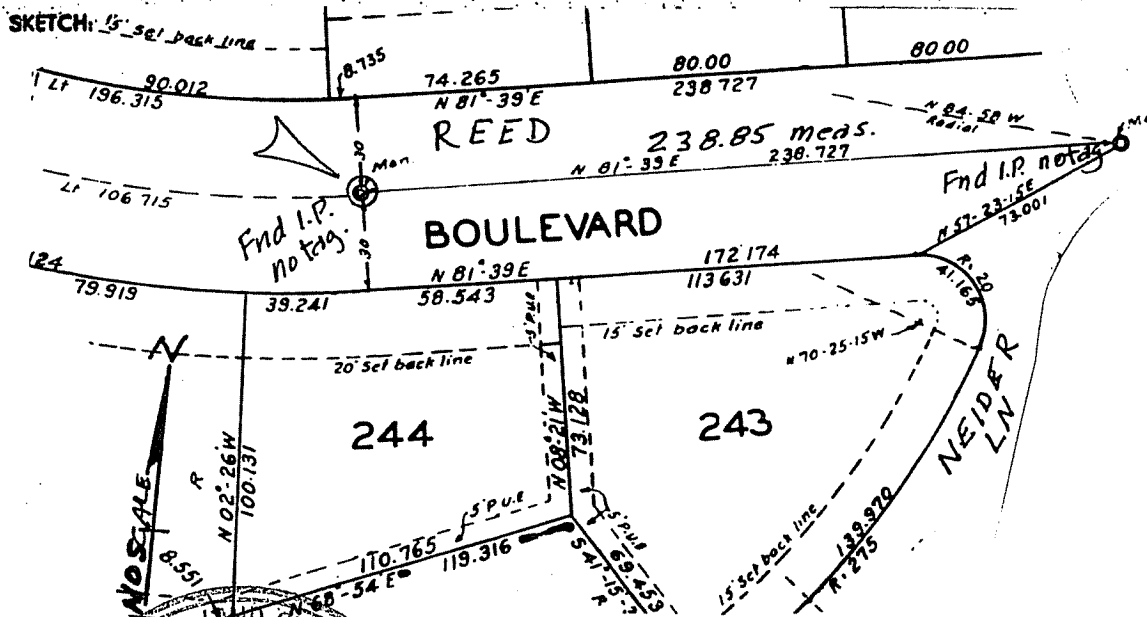
PHYSICAL DESCRIPTION OF CORNER FOUND; EVIDENCE AND METHOD USED TO IDENTIFY OR REESTABLISH

Found I.P., no tag, 2" below AC surfacr.
 Found at point indicated by street im prvemnts and in substantial agreement with next monument.

PHYSICAL DESCRIPTION OF MONUMENTS REBUILT OR PERPETUATED

Replaced I.P., with DPW bronze disk in standard street monument.

CALIFORNIA COORDINATE SYSTEM ORDER: FIRST SECOND THIRD
 STATIONS USED: NGS (USC & GS) STATE COUNTY OTHER STATION _____ STATION _____
 ZONE _____ ELEVATION _____ NORTHINGS (Y) _____ EASTINGS (X) _____



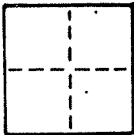
LICENSED LAND SURVEYOR
 DONALD GLENN THOMAS
 SURVEYOR'S CERTIFICATE
 THIS CORNER RECORD WAS PREPARED BY ME OR UNDER MY DIRECTION IN CONFORMANCE WITH THE LAND SURVEYORS ACT ON JUNE 16 1987
 SIGNED: Donald Glenn Thomas
 STATE OF CALIFORNIA

REGISTERED PROFESSIONAL SURVEYOR
 CHARLES F. MURPHY
 COUNTY SURVEYOR'S CERTIFICATE
 CORNER RECORD RECEIVED _____ 19____
 AND EXAMINED AND FILED 2520 1987
 NO. 18634 BY: Charles F. Murphy
 Exp. 6-30-89
 TITLE: DPW. CO. SURV
 STATE OF CALIFORNIA
 STATEMENT ON BACK OF SHEET

SEAL

YES NO

COUNTY OF Marin T. _____ R. _____ MERIDIAN _____ CALIFORNIA
 CORNER TYPE: GOVT. CORNER MEANDER RANCHO CONTROL OTHER
 CORNER IDENTIFICATION — DATE OF VISIT June 19 87



Centerline intersection of Reed Boulevard and High Court (now Neider Lane) per Map of Strawberry Heights Subdivision Three (6 Maps 58).

CORNER — LEFT AS FOUND FOUND AND TAGGED REESTABLISHED OBLITERATED CORNER REBUILT

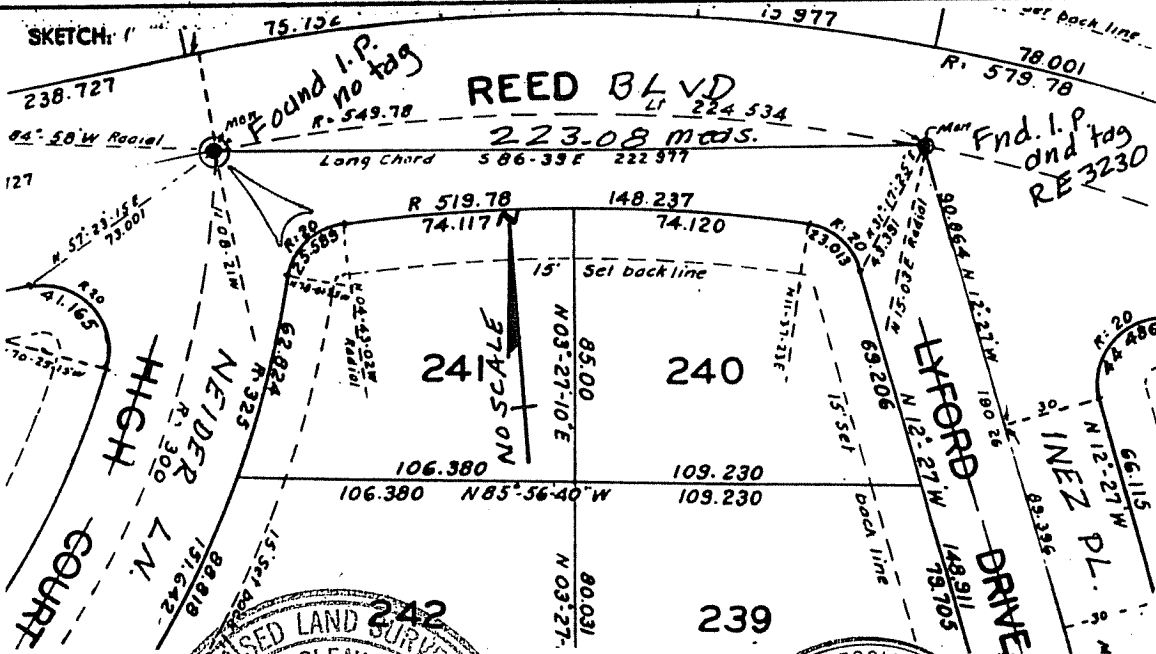
PHYSICAL DESCRIPTION OF CORNER FOUND; EVIDENCE AND METHOD USED TO IDENTIFY OR REESTABLISH

Found 1-3/4" I.P. , no tag, 3-1/2" below AC surface.
 Found at point indicated by street improvements and in substantial agreement with next monument.

PHYSICAL DESCRIPTION OF MONUMENTS, REBUILT OR PERPETUATED

Replaced I.P. with DPW bronze disk in standard street monument.

CALIFORNIA COORDINATE SYSTEM ORDER: FIRST SECOND THIRD
 STATIONS USED: NGS (USC & GS) STATE COUNTY OTHER STATION _____ STATION _____
 ZONE _____ ELEVATION _____ NORTHINGS (Y) _____ EASTINGS (X) _____



LICENSED LAND SURVEYOR
 DONALD GLENN THOMAS
 SURVEYOR'S CERTIFICATE
 THIS CORNER RECORD WAS PREPARED BY ME OR UNDER MY DIRECTION IN CONFORMANCE WITH THE LAND SURVEYORS ACT ON JUNE 16 19 87
 SIGNED Donald Thomas
 L.S. or R.C.E. No. 21303

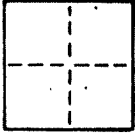
REGISTERED PROFESSIONAL ENGINEER
 CHARLES E. MURPHY
 COUNTY SURVEYOR'S CERTIFICATE
 THE CORNER RECORD WAS RECEIVED AND EXAMINED AND FILED BY Charles E. Murphy CIVIL ENGINEER
 STATE OF CALIFORNIA
 DOCUMENT NO. _____

STATEMENT ON BACK OF SHEET YES NO

COUNTY OF Marin T. _____ R. _____ MERIDIAN _____ CALIFORNIA

CORNER TYPE: GOVT. CORNER MEANDER RANCHO CONTROL OTHER

CORNER IDENTIFICATION — DATE OF VISIT June 19 87



Centerline intersection of Reed Boulevard and Lyford Drive (now Inez Place) per Map of Strawberry Heights Subdivision Three (6 Maps 58)

CORNER — LEFT AS FOUND FOUND AND TAGGED REESTABLISHED OBLITERATED CORNER REBUILT

PHYSICAL DESCRIPTION OF CORNER FOUND; EVIDENCE AND METHOD USED TO IDENTIFY OR REESTABLISH

Found 1-1/4" I.P. and tag RE3230 at point indicated by street improvements and in substantial agreement with nex monument.

PHYSICAL DESCRIPTION OF MONUMENTS, REBUILT OR PERPETUATED

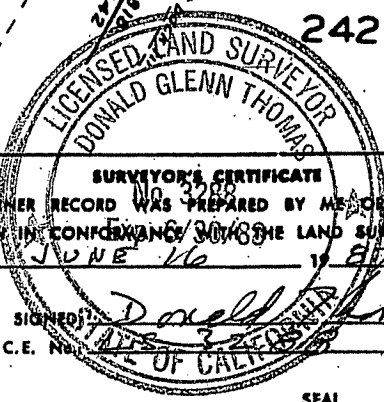
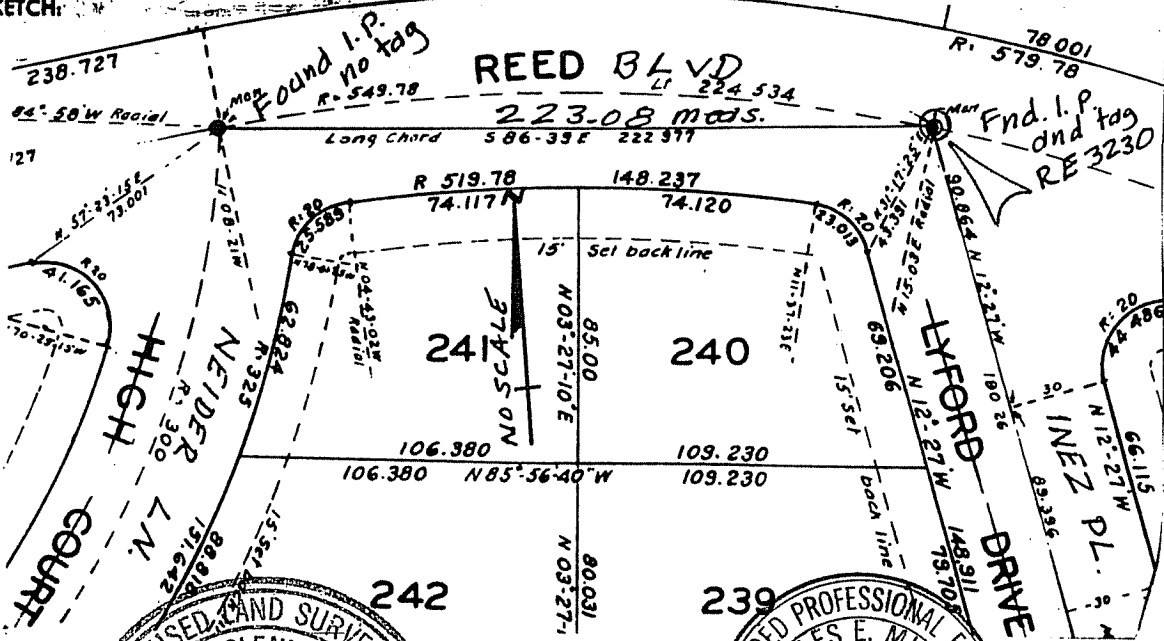
Replace I.P. with DPW bronze disk ⁱⁿ standard street monument

CALIFORNIA COORDINATE SYSTEM ORDER: FIRST SECOND THIRD

STATIONS USED: NGS (USC & GS) STATE COUNTY OTHER STATION _____ STATION _____

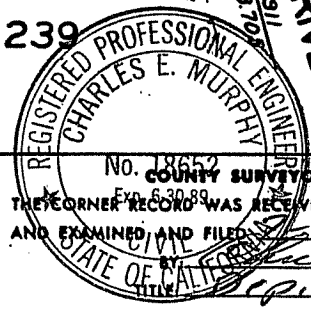
ZONE _____ ELEVATION _____ NORTHINGS (Y) _____ EASTINGS (X) _____

SKETCH:



SURVEYOR'S CERTIFICATE
THIS CORNER RECORD WAS PREPARED BY ME OR UNDER MY DIRECTION IN CONFIDANCE WITH THE LAND SURVEYORS ACT ON JUNE 16 19 87

SIGNED: Donald Glenn Thomas
L.S. or R.C.E. No. 3785



COUNTY SURVEYOR'S CERTIFICATE
THE CORNER RECORD WAS RECEIVED EX-63089 AND EXAMINED AND FILED 5-20-87 19 87
BY Charles E. Murphy
CIVIL ENGINEER
STATE OF CALIFORNIA

DOCUMENT No. _____
STATEMENT ON BACK OF SHEET YES NO