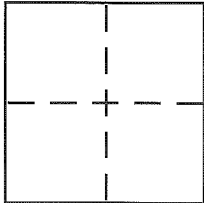


CORNER RECORD

Document Number APN 043-104-048-05

City of Mill Valley County of Marin, California

Brief Legal Description Lot 60 and 61 per 13 RM 18



CORNER TYPE

Government Corner Control
Meander Property
Rancho Other
Date of Survey 8/29/14

COORDINATES (Optional)

N. _____
E. _____
Zone _____ NAD27 NAD83
NAD83 Epoch _____
Elev. _____
Vert. Datum: NGVD29 NAVD88
Meas. Units: Metric Imperial

Corner - Left as found Found and tagged Established Reestablished Rebuilt

Identification and type of corner found: Evidence used to identify or procedure used to establish or reestablish the corner:

see sheet 2

A description of the physical condition of the monument as found and as set or reset:

see sheet 2

SURVEYOR'S STATEMENT

This Corner Record was prepared by me or under my direction in conformance with the Land Surveyor's Act on 9/16 2014

Signed [Signature] P.L.S or R.C.E. No. 6784



COUNTY SURVEYOR'S STATEMENT

This Corner Record was received 9/22/2014

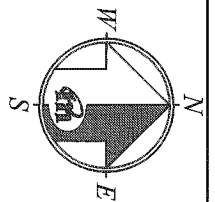
and examined and filed OCTOBER 31, 2014

Signed [Signature] P.L.S or R.C.E. No. 7821

Title DEPUTY



County Surveyor's Comment _____

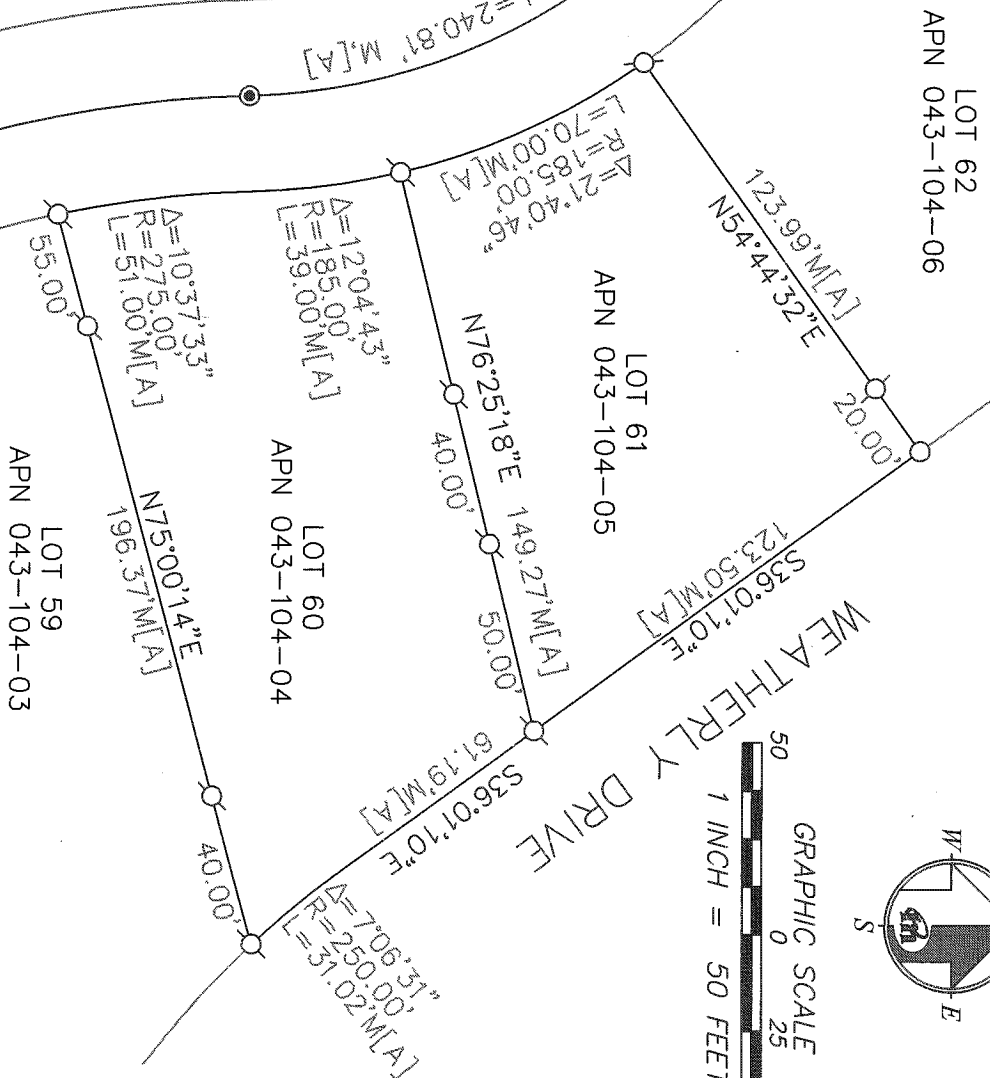


GREAT CIRCLE DRIVE (50' WIDE)

REFERENCE
 MAP OF HARBOR POINT UNIT 2B FILED FOR RECORD JUNE 7TH 1965 IN VOLUME 13 OF MAPS, AT PAGE 18, MARIN COUNTY RECORDS.

- LEGEND**
- FOUND STREET MONUMENT
 - SET 5/8" REBAR WITH CAP, PLS 6784
 - SET NAIL AND TAG PLS 6784

NOTE:
 RECORD=MEASURED.



CORNER RECORD

MERIDIAN SURVEYING
 ENGINEERING, INC.

2958 VAN NESS AVENUE
 SAN FRANCISCO, CA 94109
 (415) 440-4131 info@meridiansurvey.com

(14179) 777 GRAND AVENUE, #202
 SAN RAFAEL, CA 94901
 (415) 456-5450