

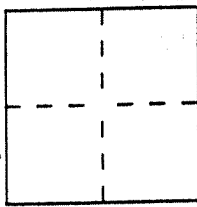
CORNER RECORD

Document Number A.P. # 43-103-05

City of MILL VALLEY

County of MARIN, California

Brief Legal Description LOT 67, 13 R.M. 18, MARIN COUNTY RECORDS



CORNER TYPE

Government Corner Control
 Meander Property
 Rancho Other
 Date of Survey 4/9/98

COORDINATES (Optional)

N. _____
 E. _____
 Zone _____ Datum _____
 Elev. _____

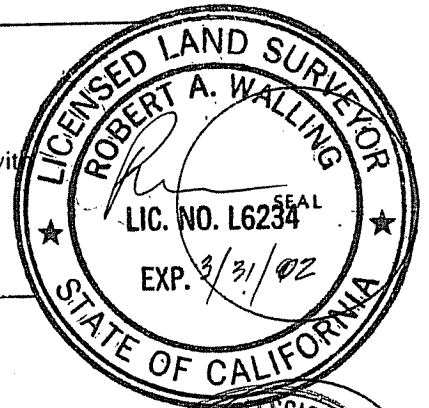
Corner — Left as found Found and tagged Established Reestablished Rebuilt

Identification and type of corner found: Evidence used to identify or procedure used to establish or reestablish the corner:
PROPERTY CORNERS REMOVED BY CONSTRUCTION, REESTABLISHED FROM FOUND EXISTING MONUMENTS IN TOP SIDE WAY & GREAT CIRCLE DRIVE PER SUBDIVISION MAP 13 R.M. 18.

A description of the physical condition of the monument as found and as set or reset:
SET SOUTH WEST CORNER - 3/8" IRON PIN WITH CAP "PLS 6234"
SET SOUTH EAST CORNER - DRILLED ROCK WALL & SET LEAD & TAG "PLS 6234"

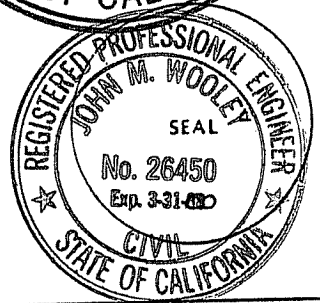
SURVEYOR'S STATEMENT

This Corner Record was prepared by me or under my direction in conformance with the Land Surveyors' Act on APRIL 9 19 98.
 Signed [Signature] L.S. or R.C.E. Number 6234

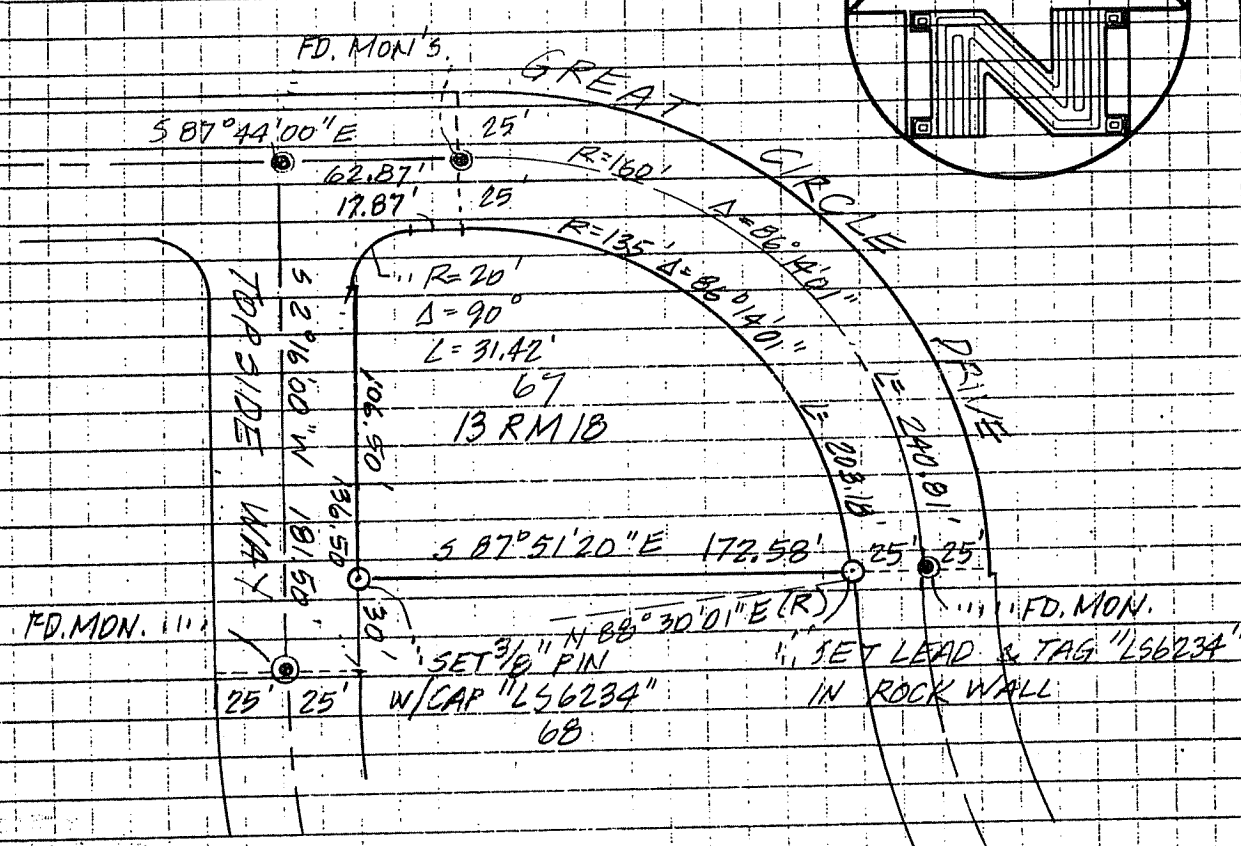
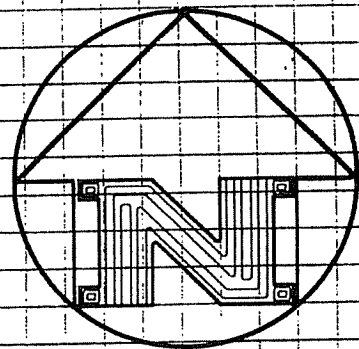


COUNTY SURVEYOR'S STATEMENT

This Corner Record was received APRIL 15 19 98 and examined and filed APRIL 16 19 98.
 Signed [Signature] Title DEPUTY



County Surveyor's Comment _____



SURVEY PLAT
LANDS OF NOURAFSHAN
 LOT 67, 13 R.M. 18
 185 GREAT CIRCLE DRIVE
 MILL VALLEY, CALIFORNIA



BOB WALLING TECHNICAL SERVICES
 P.O. Box 1346 • Glen Ellen, CA 95442
 (707) 938-1593 (415) 382-1593

JN. 98-17

APRIL 1998

APN. 43-103-05