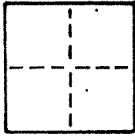


CORNER RECORD

COUNTY OF Marin T. _____ R. _____ MERIDIAN _____ CALIFORNIA

CORNER TYPE: GOVT. CORNER MEANDER RANCHO CONTROL OTHER

CORNER IDENTIFICATION — DATE OF VISIT June 19 87



Westerly centerline intersection of Carlota Circle and Richardson Drive (now Reed Boulevard) per Map of Strawberry Heights Subdivision Three (6 Maps 58)

CORNER — LEFT AS FOUND FOUND AND TAGGED REESTABLISHED OBLITERATED CORNER REBUILT

PHYSICAL DESCRIPTION OF CORNER FOUND; EVIDENCE AND METHOD USED TO IDENTIFY OR REESTABLISH

Found R R Spike with punchmark 2-1/2" below AC surface.
Found at point indicated by street improvements and in substantial agreement with neighboring monuments.

PHYSICAL DESCRIPTION OF MONUMENTS REBUILT OR PERPETUATED

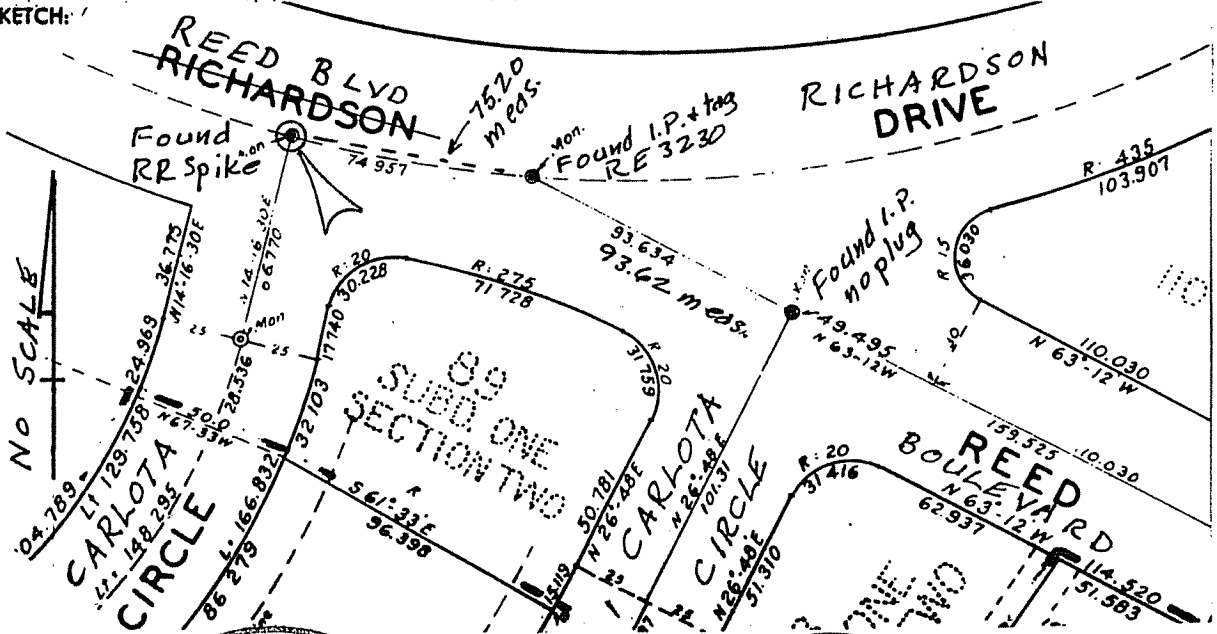
Replaced RR spike with DPW bronze disk in standard street monument.

CALIFORNIA COORDINATE SYSTEM ORDER: FIRST SECOND THIRD

STATIONS USED: NGS (USC & GS) STATE COUNTY OTHER STATION _____ STATION _____

ZONE _____ ELEVATION _____ NORTHINGS (Y) _____ EASTINGS (X) _____

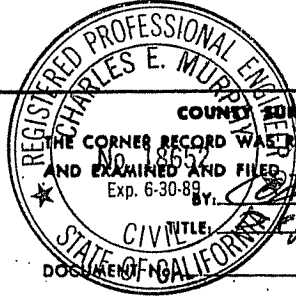
SKETCH:



THIS CORNER RECORD WAS PREPARED BY ME OR UNDER MY DIRECTION IN CONFORMANCE WITH THE LAND SURVEYORS ACT ON _____ 19 87

SIGNED: Donald Thomas

L.S. or R.C.E. No. LS 3208



COUNTY SURVEYOR'S CERTIFICATE

THE CORNER RECORD WAS RECEIVED _____ 19 87

AND EXAMINED AND FILED _____ 19 87

Exp. 6-30-88

By: Charles E. Murphy

CIVIL ENGINEER

STATE OF CALIFORNIA

DOCUMENT NO. _____

STATEMENT ON BACK OF SHEET YES NO

COUNTY OF Marin T. _____ R. _____ MERIDIAN _____ CALIFORNIA

CORNER TYPE: GOV'T. CORNER MEANDER RANCHO CONTROL OTHER

CORNER IDENTIFICATION — DATE OF VISIT June 19 87

Centerline intersection of Richardson Drive and Reed Boulevard per Map of Strawberry Heights Subdivision Three (6 Maps 58)

CORNER — LEFT AS FOUND FOUND AND TAGGED REESTABLISHED OBLITERATED CORNER REBUILT

PHYSICAL DESCRIPTION OF CORNER FOUND; EVIDENCE AND METHOD USED TO IDENTIFY OR REESTABLISH

Found I.P. and tag RE3230 2" below AC surface.
Found at point indicated by street improvements and in substantial agreement with neighboring monuments.

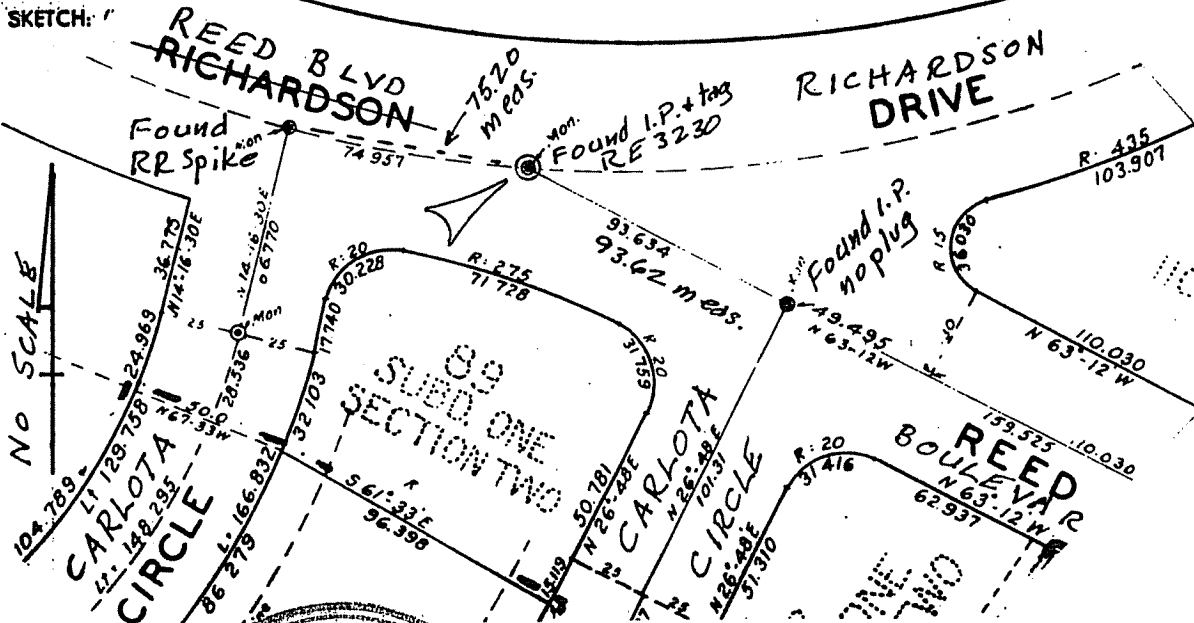
PHYSICAL DESCRIPTION OF MONUMENTS, REBUILT OR PERPETUATED

Replaced iron pipe with DPW bronze disk in standard street monument.

CALIFORNIA COORDINATE SYSTEM ORDER: FIRST SECOND THIRD

STATIONS USED: NGS (USC & GS) STATE COUNTY OTHER STATION _____ STATION _____

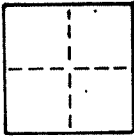
ZONE _____ ELEVATION _____ NORTHINGS (Y) _____ EASTINGS (X) _____



LAND SURVEYOR'S CERTIFICATE
DONALD GLENN THOMAS
No. 3228
THIS CORNER RECORD WAS PREPARED BY ME OR UNDER MY DIRECTION IN CONFORMANCE WITH THE LAND SURVEYORS ACT ON June 17 1987 Exp. 6/30/88
SIGNED: Donald Thomas
L.S. or R.C.E. No. 3228
STATE OF CALIFORNIA

REGISTERED PROFESSIONAL ENGINEER'S CERTIFICATE
CHARLES E. MITCHELL
THIS CORNER RECORD WAS RECEIVED AND EXAMINED AND FILED July 20 1987
No. 18652 BY: Charles E. Mitchell
Exp. 6-30-89 TITLE: Dist. Co. Survr
STATE OF CALIFORNIA
STATEMENT ON BACK OF SHEET YES NO

COUNTY OF Marin T. _____ R. _____ MERIDIAN CALIFORNIA
 CORNER TYPE: GOVT. CORNER MEANDER RANCHO CONTROL OTHER
 CORNER IDENTIFICATION — DATE OF VISIT June 19 87



Easterly centerline intersection of Carlota Circle and
Reed Boulevard per Map of Strawberry Heights Subdivision
Three (6 Mpas 58)

CORNER — LEFT AS FOUND FOUND AND TAGGED REESTABLISHED OBLITERATED CORNER REBUILT

PHYSICAL DESCRIPTION OF CORNER FOUND; EVIDENCE AND METHOD USED TO IDENTIFY OR REESTABLISH

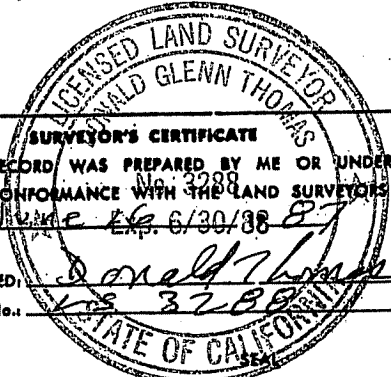
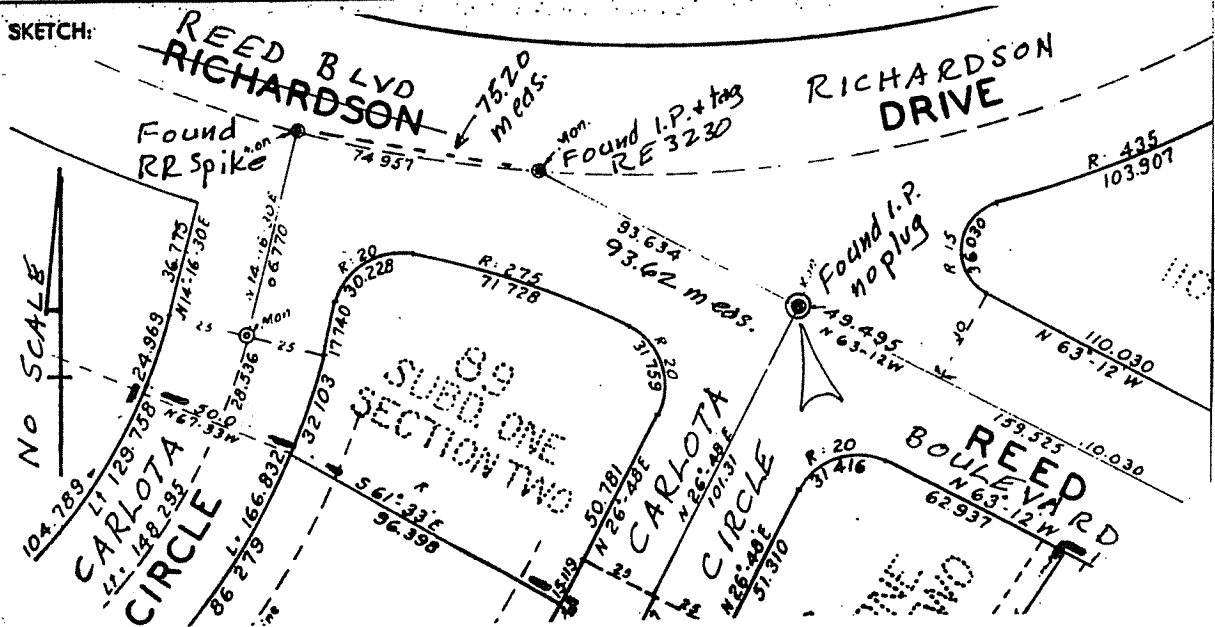
Found I.P., no plug, 5-1/2" below AC surface.
Found at point indicated by street improvements and in
substantial agreement with neighboring monuments.

PHYSICAL DESCRIPTION OF MONUMENTS, REBUILT OR PERPETUATED

Replaced iron pipe with DPW bronze disk in standard street monument.

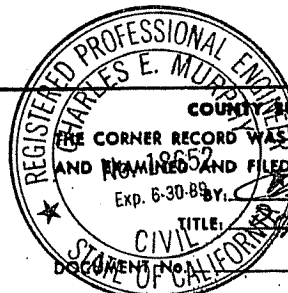
CALIFORNIA COORDINATE SYSTEM ORDER: FIRST SECOND THIRD
 STATIONS USED: NGS (USC & GS) STATE COUNTY OTHER STATION _____ STATION _____
 ZONE _____ ELEVATION _____ NORTHINGS (Y) _____ EASTINGS (X) _____

SKETCH:



SURVEYOR'S CERTIFICATE
 THIS CORNER RECORD WAS PREPARED BY ME OR UNDER MY
 DIRECTION IN CONFORMANCE WITH THE LAND SURVEYORS ACT
 ON June 26, 1987 Exp. 6/30/88

SIGNED: Donald Glenn Thomas
 L.S. or R.C.E. No. 3288



COUNTY SURVEYOR'S CERTIFICATE
 THE CORNER RECORD WAS RECEIVED _____ 19____
 AND FILED July 20, 1987
 Exp. 6-30-89
 TITLE: Marin Co. Surv.

STATEMENT ON BACK OF SHEET YES NO