

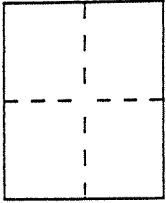
# CORNER RECORD

Document Number A.P.N. 43-082-07

City of (Unincorporated) Mill valley

County of \_\_\_\_\_, California

Brief Legal Description Lot 27 6 RM 97



### CORNER TYPE

Government Corner  Control   
 Meander  Property   
 Rancho  Other   
 Date of Survey 6/10/99

### COORDINATES (Optional)

N. \_\_\_\_\_  
 E. \_\_\_\_\_  
 Zone \_\_\_\_\_ Datum \_\_\_\_\_  
 Elev. \_\_\_\_\_

Corner — Left as found  Found and tagged  Established  Reestablished  Rebuilt

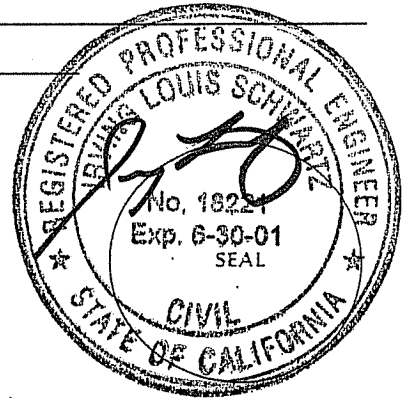
Identification and type of corner found: Evidence used to identify or procedure used to establish or reestablish the corner:  
Found railroad spike on centerline of Strawberry Circle which matches  
location of monument shown on 6 RM 97; centerlines determined by splitting  
curb widths; existing fences on east and west fit lot line locations.

A description of the physical condition of the monument as found and as set or reset: \_\_\_\_\_  
Set 3/4" iron pipe and tag RCE 18221 at the northwesterly corner of lot  
27 as shown on 6 RM 97 using record data.

### SURVEYOR'S STATEMENT

This Corner Record was prepared by me or under my direction in conformance with  
 the Land Surveyors' Act on JUNE 16 19 99

Signed [Signature] L.S. or R.C.E. Number 18221



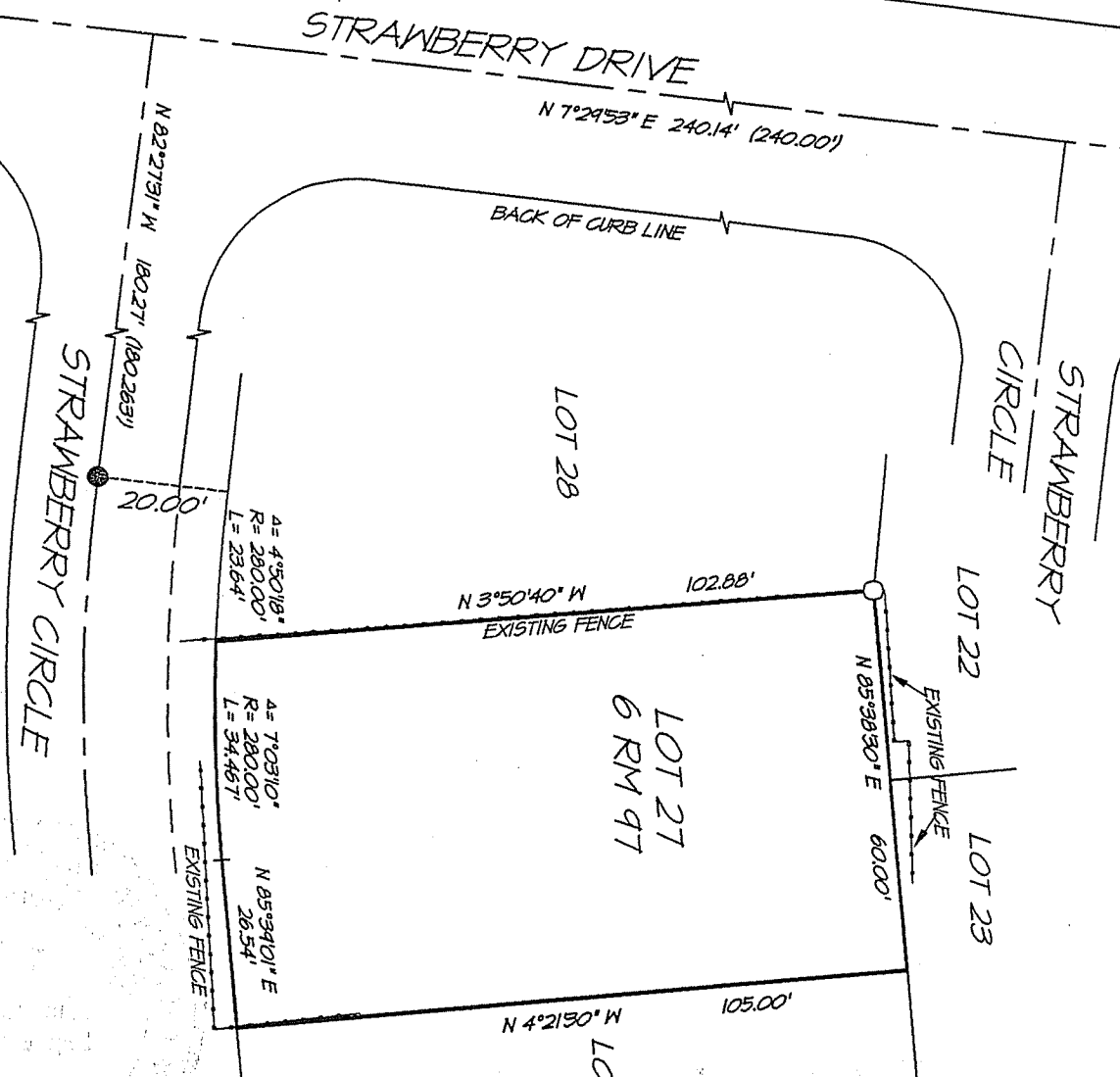
### COUNTY SURVEYOR'S STATEMENT

This Corner Record was received JUNE 18 19 99 and examined  
 and filed JUNE 21 19 99.

Signed [Signature] Title DEPUTY



County Surveyor's Comment \_\_\_\_\_  
 \_\_\_\_\_  
 \_\_\_\_\_

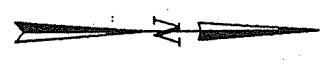


**LEGEND**

- FOUND RAILROAD SPIKE WITH PUNCH MARK
- SET 3/4" IRON PIPE & TAG R.C.E. 19221"

**NOTE:**

ALL DIMENSIONS SHOWN HEREON ARE PER 6 RM 97 UNLESS OTHERWISE NOTED.  
 ( ) = RECORD DATA PER 6 RM 97, MARIN COUNTY RECORDS  
 CENTERLINES DETERMINED BY SPLITTING CURB WIDTH



SCALE 1" = 30'

**EXHIBIT "A"**

**I. L. SCHWARTZ ASSOCIATES, INC.**  
 CIVIL ENGINEERING AND LAND SURVEYING  
 79 GALLI DRIVE, NOVATO, CA 94949 (415) 883-9200

A.P.N. 43-083-07