

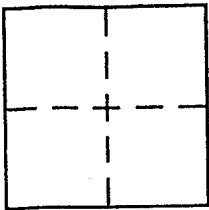
**CORNER RECORD**

Document Number APN 043-072-08 E, 09

City of MILL VALLEY

County of MARIN, California

Brief Legal Description LOT 231 + LOT 232, STRAWBERRY HEIGHTS, SUB'D 3 (6RM58)



**CORNER TYPE**

Government Corner  Control   
Meander  Property   
Rancho  Other   
Date of Survey \_\_\_\_\_

**COORDINATES (Optional)**

N. \_\_\_\_\_  
E. \_\_\_\_\_  
Zone \_\_\_\_\_ NAD27  NAD83   
NAD83 Epoch \_\_\_\_\_  
Elev. \_\_\_\_\_  
Vert. Datum: NGVD29  NAVD88   
Meas. Units: Metric  Imperial

Corner - Left as found  Found and tagged  Established  Reestablished  Rebuilt

Identification and type of corner found: Evidence used to identify or procedure used to establish or reestablish the corner:

FOUND STREET MONUMENTS PER RECORD MAP  
(6 RM 58)

A description of the physical condition of the monument as found and as set or reset: SET 3/4" IRON  
PIPE WITH PLASTIC CAP, RCE 30465; SEE PAGE 2

**SURVEYOR'S STATEMENT**

This Corner Record was prepared by me or under my direction in conformance with the Land Surveyor's Act on DECEMBER 13, 2004

Signed [Signature] P.L.S. or R.C.E. No. 30465



**COUNTY SURVEYOR'S STATEMENT**

This Corner Record was received DECEMBER 20, 2004

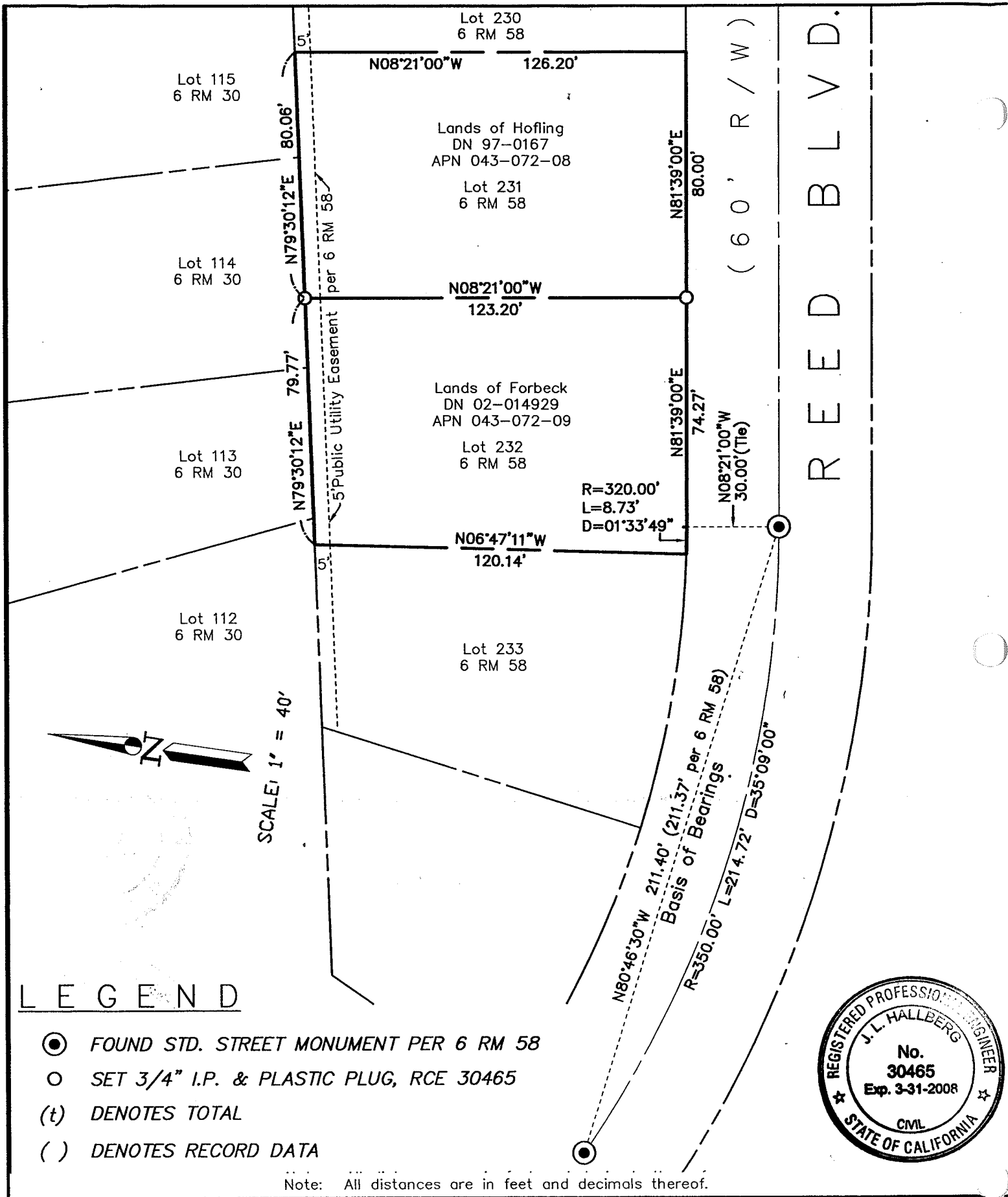
and examined and filed JANUARY 26, 2005

Signed [Signature] P.L.S. or R.C.E. No. 7128

Title COUNTY SURVEYOR

County Surveyor's Comment \_\_\_\_\_





**LEGEND**

- FOUND STD. STREET MONUMENT PER 6 RM 58
- SET 3/4" I.P. & PLASTIC PLUG, RCE 30465
- (t) DENOTES TOTAL
- ( ) DENOTES RECORD DATA

Note: All distances are in feet and decimals thereof.

SHEET	1	OF	1
SCALE:	1" = 40'	DESIGN:	MDH
DATE:	12/13/04	DRAWN:	KMT
FILE:	2004-194	CHECKED:	JLH

**J.L. ENGINEERING**  
 CIVIL ENGINEERS—LAND SURVEYORS  
 1539 4th ST., SAN RAFAEL, CA. 94901 (415) 457-6647

**Corner Record**  
 Lands of Hofling & Lands of Forbeck  
 APN 043-072-08&09, Mill Valley, Marin County, CA