

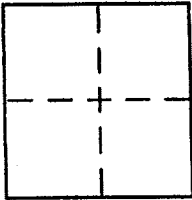
CORNER RECORD

Document Number APN: 043-072-07

City of Mill Valley

County of Marin, California

Brief Legal Description Lot 230 of 6 P.M. 58 M.C.R.



CORNER TYPE

- Government Corner Control
- Meander Property
- Rancho Other
- Date of Survey _____

COORDINATES (Optional)

N. _____
 E. _____
 Zone _____ NAD27 NAD83
 NAD83 Epoch _____
 Elev. _____
 Vert. Datum: NGVD29 NAVD88
 Meas. Units: Metric Imperial

Corner - Left as found Found and tagged Established Reestablished Rebuilt

Identification and type of corner found: Evidence used to identify or procedure used to establish or reestablish the corner:

See sheet 2 of 2

A description of the physical condition of the monument as found and as set or reset:

See sheet 2 of 2

SURVEYOR'S STATEMENT

This Corner Record was prepared by me or under my direction in conformance with the Land Surveyor's Act on 4/13/2013

Signed [Signature] P.L.S or R.C.E. No. 6784

COUNTY SURVEYOR'S STATEMENT

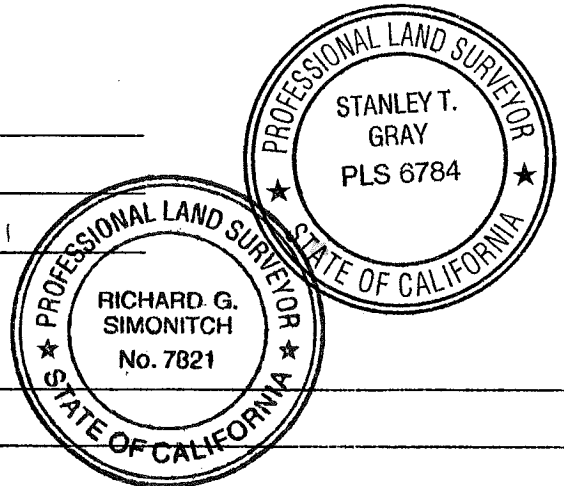
This Corner Record was received MAY 4, 2013

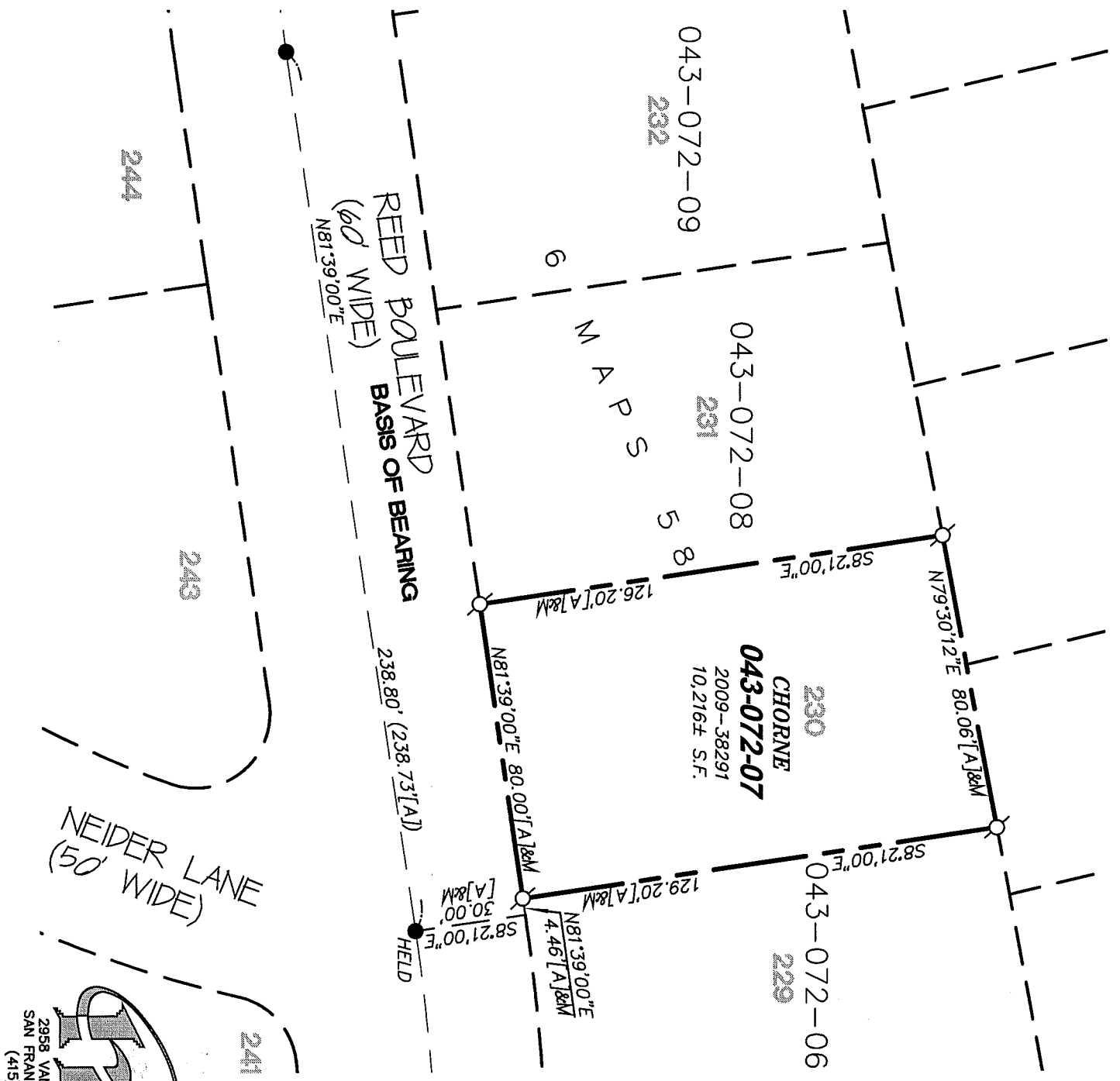
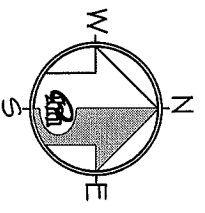
and examined and filed May 7, 2013

Signed [Signature] P.L.S or R.C.E. No. 7821

Title DEP. COUNTY SURVEYOR

County Surveyor's Comment _____





REFERENCE

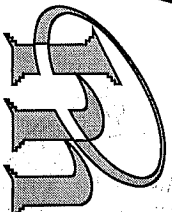
[A] "MAP OF STRAWBERRY HEIGHTS SUBDIVISION THREE..., MARIN COUNTY, CALIFORNIA" FILED FOR RECORD APRIL 26, 1948 IN VOLUME 6 OF MAPS, AT PAGE 58, MARIN COUNTY RECORDS.

LEGEND

- FOUND CITY MONUMENT
- SET 5/8" REBAR WITH CAP, PLS 6784



CORNER RECORD



MERIDIAN SURVEYING
ENGINEERING, INC.

2958 VAN NESS AVENUE 13024 777 GRAND AVENUE, #202
 SAN FRANCISCO, CA 94109 SAN RAFAEL, CA 94901
 (415) 440-4131 info@meridiansurvey.com (415) 456-5450