

CORNER RECORD

Document Number

043-071-30

City of

Mill Valley

County of

Marin

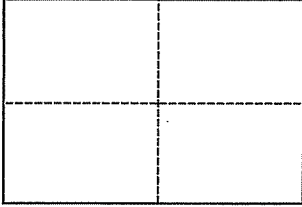
California

Brief Legal Description

Lot 69 Per Map of Strawberry Heights Subdivision One, Section One, 6 RM 21

CORNER TYPE

**COORDINATES
(Optional)**



Government Corner Control North _____
 Meander Property East _____
 Rancho Other Zone _____ Datum _____
 Date of Survey June 14, 2012 **IS MAP**

Corner _____ Left as found Found and tagged Established Reestablished Rebuilt

Identification and type of corner found: Evidence used to identify or procedure used to establish or reestablish the corner:

Found Standard Street Monuments at Richardson Drive/Reed Blvd. and Richardson Drive /Ricardo Road per 6 RM 21

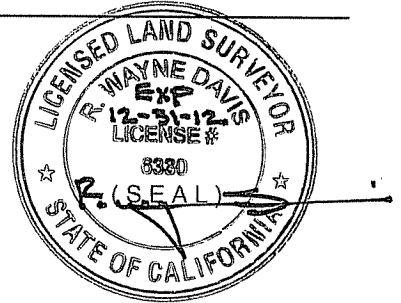
A description of the physical condition of the monument as found and as set or reset: _____

Set 1/2" Rebar Tagged LS 6330 at Northeast Corner and Point on Line Easterly Property Line. Also Set Ginny and Tack on Easterly Line.

SURVEYOR'S STATEMENT

This Corner Record was prepared by me or under my direction in conformance with the Land Surveyors' Act on July 3, 2012

Signed [Signature] L.S. or R.C.E. Number L.S. 6330



COUNTY SURVEYOR'S STATEMENT

This Corner Record was received JULY 6, 2012

and examined and filed AUGUST 23, 2012

Signed [Signature] Title COUNTY SURVEYOR

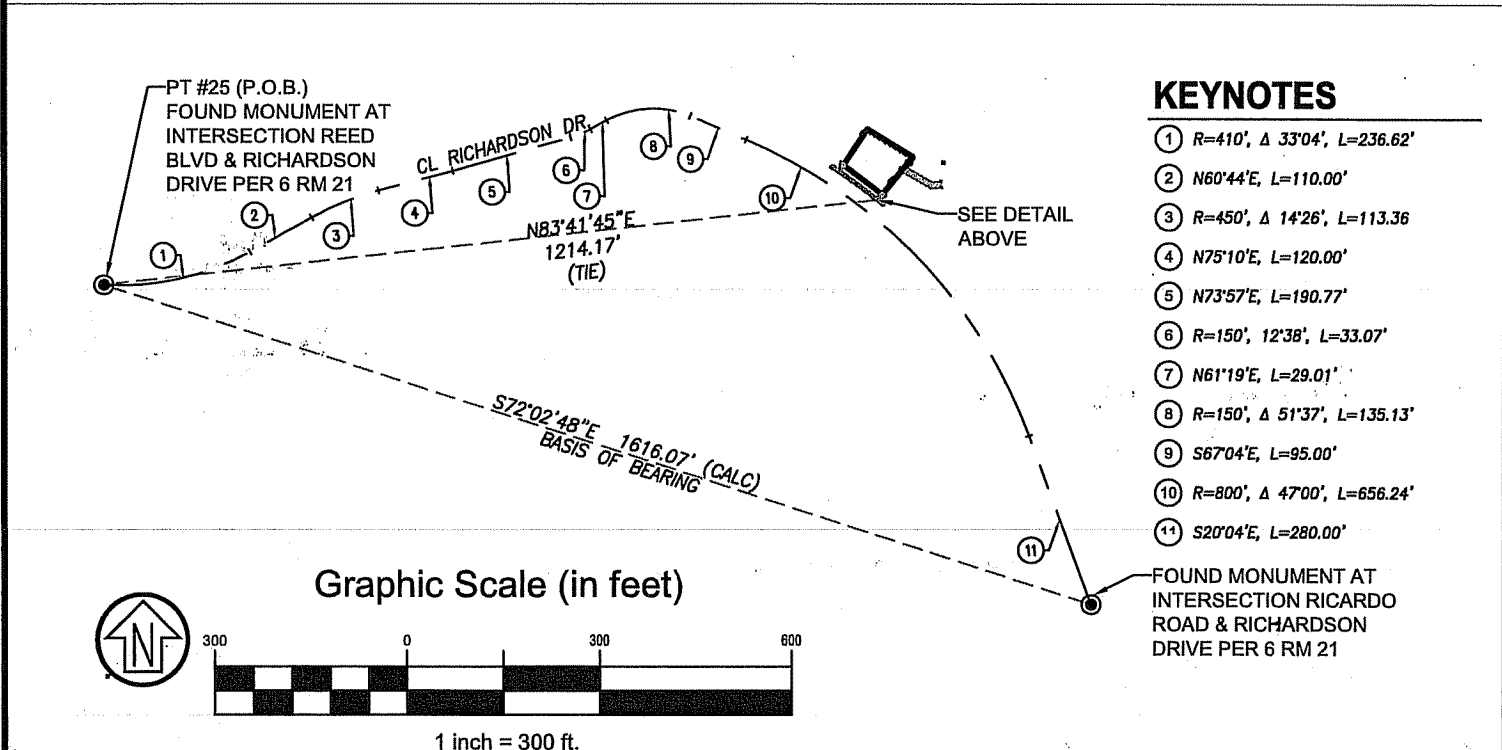
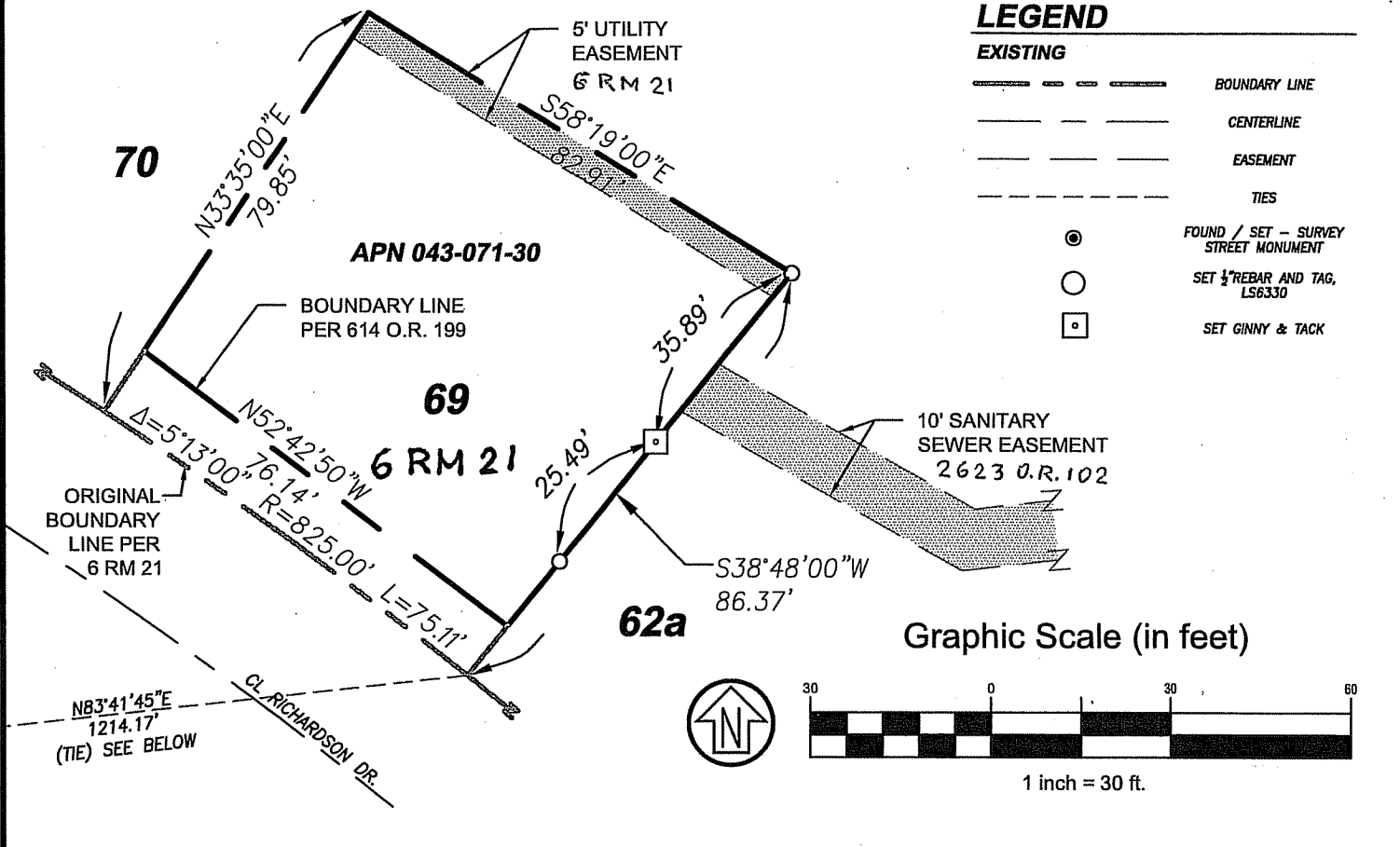


County Surveyor's Comment _____

LEGEND

EXISTING

	BOUNDARY LINE
	CENTERLINE
	EASEMENT
	TIES
	FOUND / SET - SURVEY STREET MONUMENT
	SET 1/2" REBAR AND TAG, LS6330
	SET GINNY & TACK



KEYNOTES

- ① R=410', Δ 33°04', L=236.62'
- ② N60°44'E, L=110.00'
- ③ R=450', Δ 14°26', L=113.36
- ④ N75°10'E, L=120.00'
- ⑤ N73°57'E, L=190.77'
- ⑥ R=150', Δ 12°38', L=33.07'
- ⑦ N61°19'E, L=29.01'
- ⑧ R=150', Δ 51°37', L=135.13'
- ⑨ S67°04'E, L=95.00'
- ⑩ R=800', Δ 47°00', L=656.24'
- ⑪ S20°04'E, L=280.00'

R.W. DAVIS & ASSOCIATES
LAND SURVEYORS

45 Leveroni Court
 Novato CA 94949
 L.S. 6330

Tel. (415) 883-9099
 Fax (415) 883-2016
 Email: RWDAVIS@RWDAVIS-SURVEY.COM

© 2011

Rev.	Date: 06-25-2012
Job No. 376-001	Scale: AS NOTED

CORNER RECORD

APN: 043-071-30
 LOT 69, 6 RM 21

MILL VALLEY MARIN CALIFORNIA