

L. A. Stevens & Associates, Inc.
Professional Land Surveyors
Novato, California

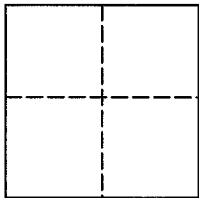
Lands of Achuck
Job #: 14-1591

CORNER RECORD

Document Number 043-051-12

City of Mill Valley, County of Marin, California

Brief Legal Description: Being Lands of 139 Belvedere Drive LLC granted to them per DN 2013-53698 as shown on that certain map entitled, "ROS Lands of 139 Belvedere Drive LLC" filed in Book 2014 of Maps, Page 75, Marin County Records.



CORNER TYPE

COORDINATES (Optional)

Government Corner Control

Meander Property

Rancho Other

Date of Survey July 30, 2014

N _____

E _____

Zone _____ NAD27 NAD83

NAD 83 Epoch _____

Elev. _____

Vert. Datum: NGVD29 NAVD88

Meas. Units: Metric Imperial

Corner - Left as found Found and tagged Established Reestablished Rebuilt

Identification and type of corner found: Evidence used to identify or procedure used to establish or reestablish the corner:
See Page 2 of 2 for additional information

A description of the physical condition of the monument as found and as set or reset:
See Page 2 of 2 for additional information

SURVEYOR'S STATEMENT

This Corner Record was prepared by me or under my direction in conformance with
The Land Surveyor's Act on August 05, 2014.

Signed *Lawrence A. Stevens* P.L.S. 6649



COUNTY SURVEYOR'S STATEMENT

This Corner Record was received 08/12/2014
and examined and filed SEPTEMBER 2, 2014

Signed *Richard G. Simonitch* P.L.S. or R.C.E. No. 7821

Title Deputy Co. Surveyor

County Surveyors' Comment _____



All distances shown are in feet and decimals thereof

LEGEND

S87°47'00"W () 1
10.00' () 1
LOT 41

FOUND 3/4" IRON PIPE,
OPEN, PER 2014 M 75

TIE: N22°04'55"E 0.56' NTS
(FROM SET REBAR)

● Found 5/8" Rebar & 1 1/2" Aluminum cap with Punch, Stamped "LA Stevens PLS 6649" U.N.O.

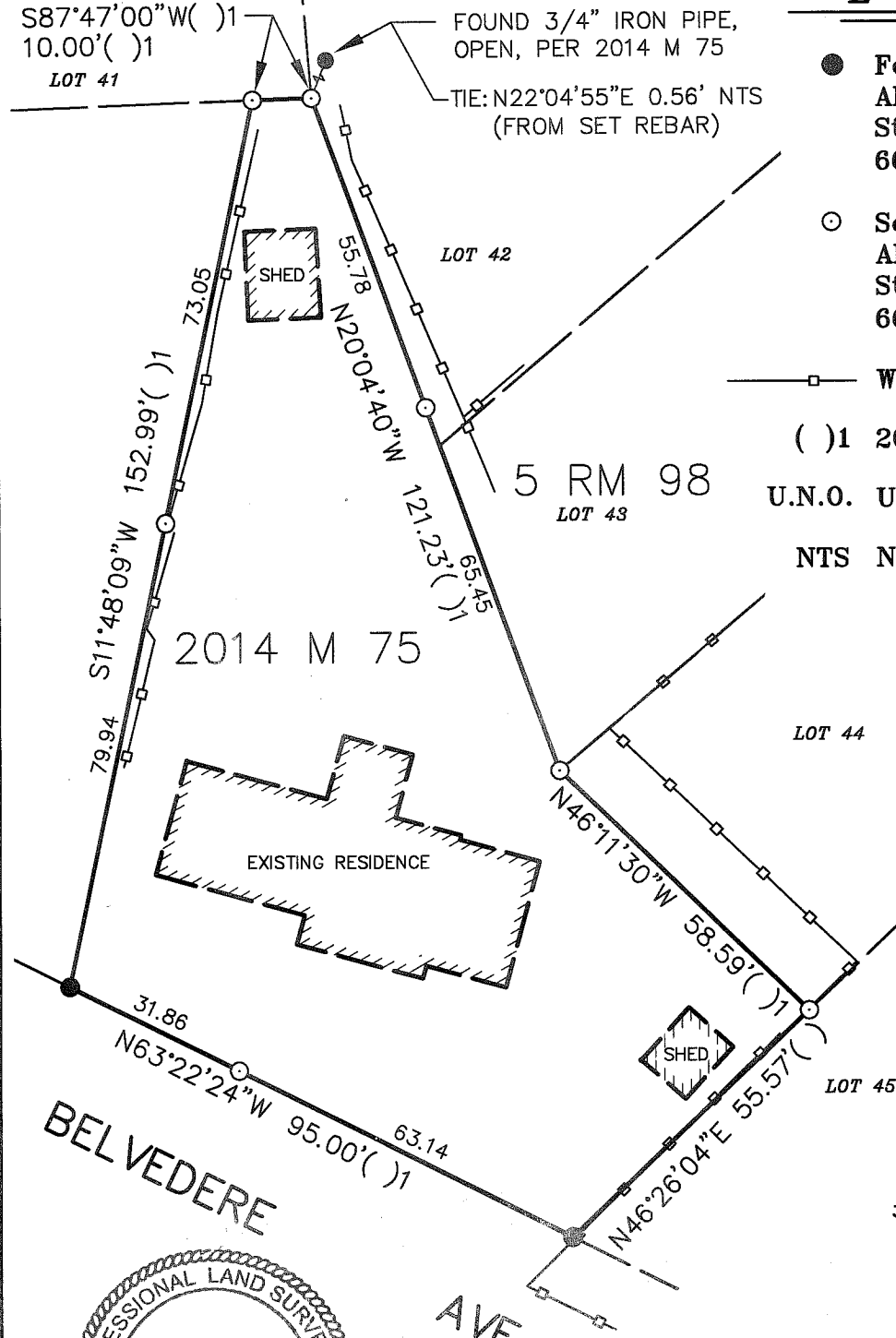
○ Set 5/8" Rebar & 1 1/2" Aluminum cap with Punch, Stamped "LA Stevens PLS 6649"

—□— Wood Fence

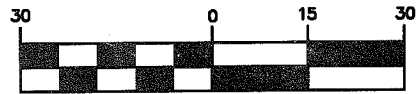
() 2014 ROS 75

U.N.O. Unless Noted Otherwise

NTS Not to Scale



GRAPHIC SCALE



(IN FEET)



8-5-2014

Lawrence A. Stevens, PLS 6649

Copyright © Lawrence A. Stevens 2014

Corner Record Lands of 139 Belvedere Drive LLC

(DN 2013-53698)

Mill Valley Marin County California
Scale: 1" = 30 August 2014

L.A. Stevens & Associates, Inc.

Professional Land Surveyors * (415) 382-7713
7 Commercial Blvd., Suite 1 * Novato, CA 94949

Job # 14-1591

Page 2 Of 2