

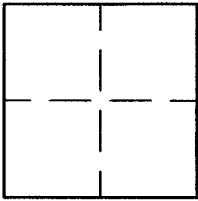
CORNER RECORD

Document Number A.P. 043-021-60

City of MILL VALLEY

County of MARIN, California

Brief Legal Description 2008 M 80 / 16 O.S. 80



CORNER TYPE **COORDINATES (Optional)**

Government Corner Control

Meander Property

Rancho Other

Date of Survey 9/26/13

N. _____
 E. _____
 Zone NAD27 NAD83
 NAD83 Epoch _____
 Elev. _____
 Vert. Datum: NGVD29 NAVD88
 Meas. Units: Metric Imperial

Corner- Left as found Found and tagged Established Reestablished Rebuilt

Identification and type of corner found: Evidence used to identify or procedure used to establish or reestablish the corner:
REESTABLISHED THE NORTHERLY AND EASTERLY LINES OF LANDS OF KOLB AS SHOWN ON 2008 M 80 USING
FOUND POINTS AS SHOWN ON 16 O.S. 80 AND 2008 M 80 AND AS SHOWN ON SHEET 2.

A description of the physical condition of the monument as found and as set or reset: SEE SHEET 2.

SURVEYOR'S STATEMENT

This Corner Record was prepared by me or under my direction in conformance with
 the Land Surveyor's Act on SEPTEMBER 26, 2013
 Signed Lawrence P Doyle P.L.S. or R.C.E. No. P.L.S. 4694



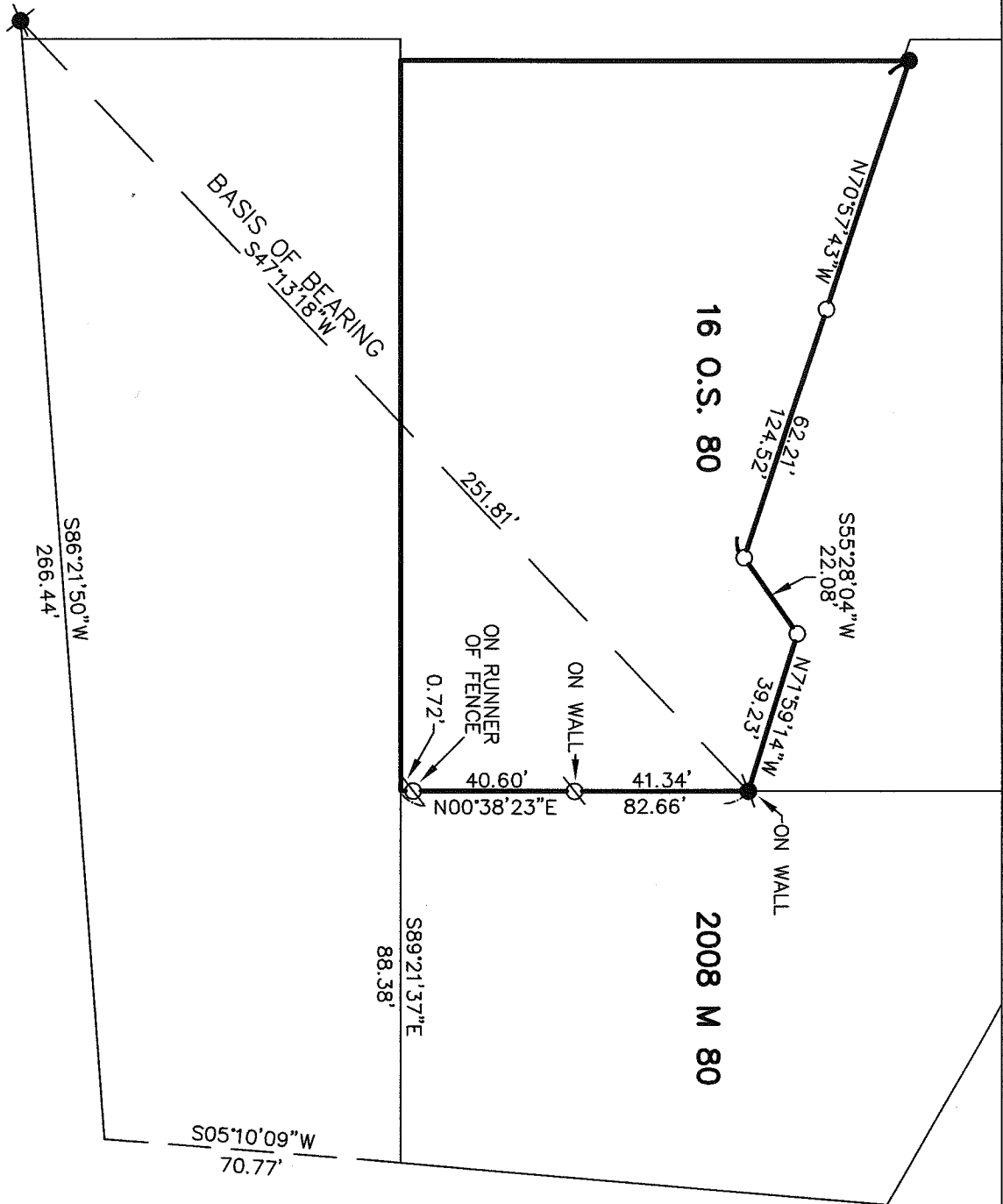
COUNTY SURVEYOR'S STATEMENT

This Corner Record was received OCTOBER 24, 2013
 and examined and filed DECEMBER 24, 2013
 Signed [Signature] P.L.S. or R.C.E. No. 7821
 Title DEPUTY COUNTY SURVEYOR



County Surveyor's Comment _____

SOUTH KNOLL DRIVE
R/W VARIES



LEGEND

- FOUND PIPE/TAG (UNREADABLE, NO RECORD)
- FOUND R.R. SPIKE PER 2008 M 80
- FOUND NAIL/TAG ON WALL L.S. 2897
- SET PIPE/PLUG L.S. 4694
- SET NAIL/TAG L.S. 4694

BASIS OF BEARING

THE BASIS OF BEARING IS
S47°13'18\"/>



CORNER RECORD	
2008 M 80 / 16 O.S. 80	
MILL VALLEY	MARIN COUNTY
CALIFORNIA	
LAWRENCE P. DOYLE	
LAND SURVEYOR/CIVIL ENGINEER	
100 HELENS LANE MILL VALLEY CA 94941 (415-388-9585)	
SCALE: 1" = 40'	DRAWN BY:
DATE: 9/26/13	SHEET 2 OF 2
DRAWING NO.	2417