

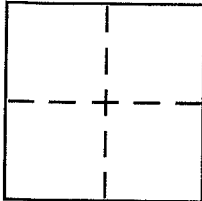
CORNER RECORD

Document Number 39-290-55

City of TIBURON

County of MARIN, California

Brief Legal Description LOT 24 & A PORTION OF LOT 25 19 RM 23, 1999 M 224



CORNER TYPE

Government Corner Control
Meander Property
Rancho Other
Date of Survey 7/22/2004

COORDINATES (Optional)

N. _____
E. _____
Zone _____ NAD27 NAD83
NAD83 Epoch _____
Elev. _____
Vert. Datum: NGVD29 NAVD88
Meas. Units: Metric Imperial

Corner - Left as found Found and tagged Established Reestablished Rebuilt

Identification and type of corner found: Evidence used to identify or procedure used to establish or reestablish the corner:

Reestablish the southeasterly corner of lot 26
19 RM 23 & MISC. LOT LINE POINTS ALONG THE
SOUTHERLY LINE OF SAME SAID LOT. POINTS SET FROM
EXISTING STANDARD STREET MONUMENTS ON
GILMARTIN DRIVE AS SHOWN ON SKETCH ON REVERSE SIDE.

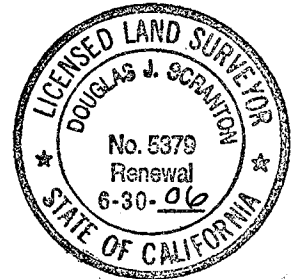
A description of the physical condition of the monument as found and as set or reset:

At southeasterly corner ~ LS 5379 TAG & BRASS NAIL SET
IN CONCRETE DRIVEWAY (REPLACED MISSING LS TAG 5379)
ALONG SOUTHERLY LINE SET ASPHALT NAILS (GMA BRAND)
IN EXISTING ROADWAY PAVING

SURVEYOR'S STATEMENT

This Corner Record was prepared by me or under my direction in conformance with the Land Surveyor's Act on JULY 30 2004

Signed [Signature] P.L.S or R.C.E. No. PLS 5379



COUNTY SURVEYOR'S STATEMENT

This Corner Record was received AUGUST 2, 2004

and examined and filed AUGUST 26, 2004

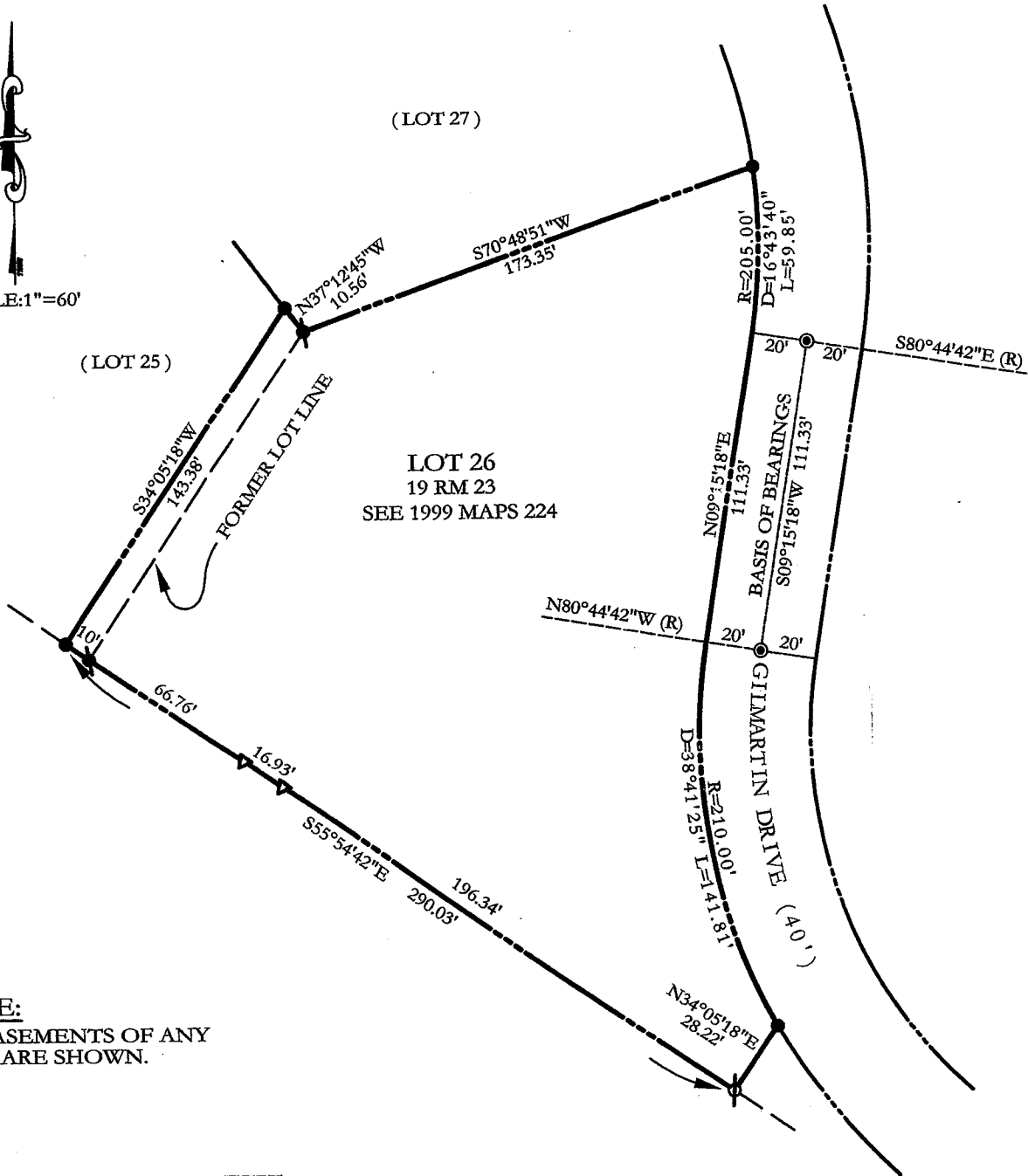
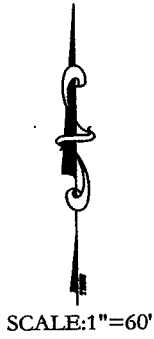
Signed [Signature] P.L.S or R.C.E. No. 7128

Title COUNTY SURVEYOR

County Surveyor's Comment _____



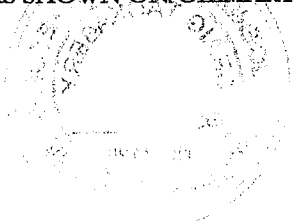
Prepared by DJ SCRANTON SURVEYING NOVATO, CA



NOTE:
NO EASEMENTS OF ANY
KIND ARE SHOWN.

ALL DISTANCES GIVEN IN FEET
AND DECIMALS THEREOF

BASIS OF BEARINGS
TAKEN AS S 09°15'18" W BETWEEN MONUMENTS
AS SHOWN ON GILMARTIN DRIVE.



LEGEND

- ⊕ PK NAIL AND LS TAG 5379
IN DRIVEWAY PER PREVIOUS
CORNER RECORD.
- ⊙ STANDARD SUBDIVISION
MONUMENT
- EXISTING LS 5379 PER PREVIOUS
CORNER RECORD AND PER
1999 MAPS 224
- ▲ SET PAVEMENT NAIL
- ⊕ LS 3971 PER 19 RM 23

**MAP OF DEL MAR SUBDIVISION
(19 RM 23)**

SITUS: APN 39-290-55