

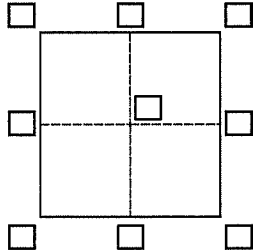
CORNER RECORD

Agency Index DPW#19-025

Document Number AP#039-290-06

City of Tiburon County of Marin, California

Brief Legal Description Lot 6, 19 RM 23



CORNER TYPE

- Government Corner Control
- Meander Property
- Rancho Other

Date of Survey April 8, 2019

COORDINATES (Optional)

N. _____ E. _____

Elevation _____

Units Metric U.S. Survey Foot

Horizontal Datum _____

Zone _____ Epoch Date _____

Vertical Datum _____

Complies with Public Resources Code §§8801-8819

Complies with Public Resources Code §§8890-8902

PLS Act Ref.: 8765(d) 8771 8773 Other:

Corner/Monument: Left as found Established Rebuilt Pre-Construction

Found and tagged Reestablished Referenced Post-Construction

Narrative of corner identified and monument as found, set, reset, replaced, or removed:

See sheet #2 for description(s):

SURVEYOR'S STATEMENT

This Corner Record was prepared by me or under my direction in conformance with the Professional Land Surveyors' Act on June 24, 2019.

Signed J. Hallberg P.L.S. or R.C.E. No. 30465



COUNTY SURVEYOR'S STATEMENT

This Corner Record was received April 23, 2019

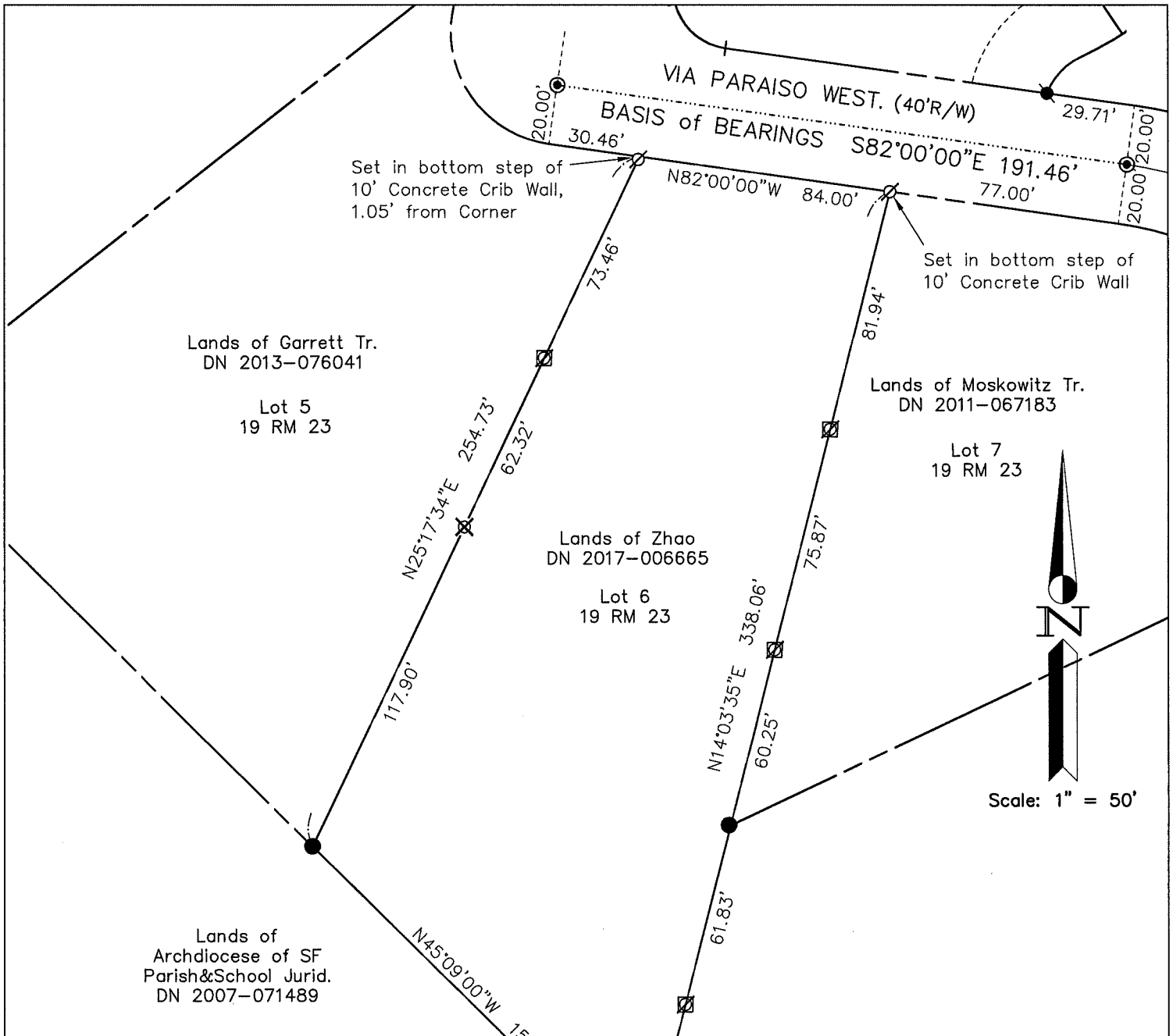
and examined and filed July 29, 2019.

Signed J. Semerad P.L.S. or R.C.E. No. 9292

Title DEPUTY C.S.

County Surveyor's Comment





Scale: 1" = 50'

LEGEND

- FOUND STRT MONUMENT, PER 19 RM 23
- FOUND IP & PLUG, LS 3971 PER 19 RM 23
- FOUND NAIL & TAG, LS 5767, PER CR#039-290-04
- SET IP & PLUG, RCE 30465
- ⊠ SET REBAR & CAP, RCE 30465
- ∅ SET NAIL & TAG, RCE 30465
- ⊠ SET 2x2 HUB & TAG, RCE 30465

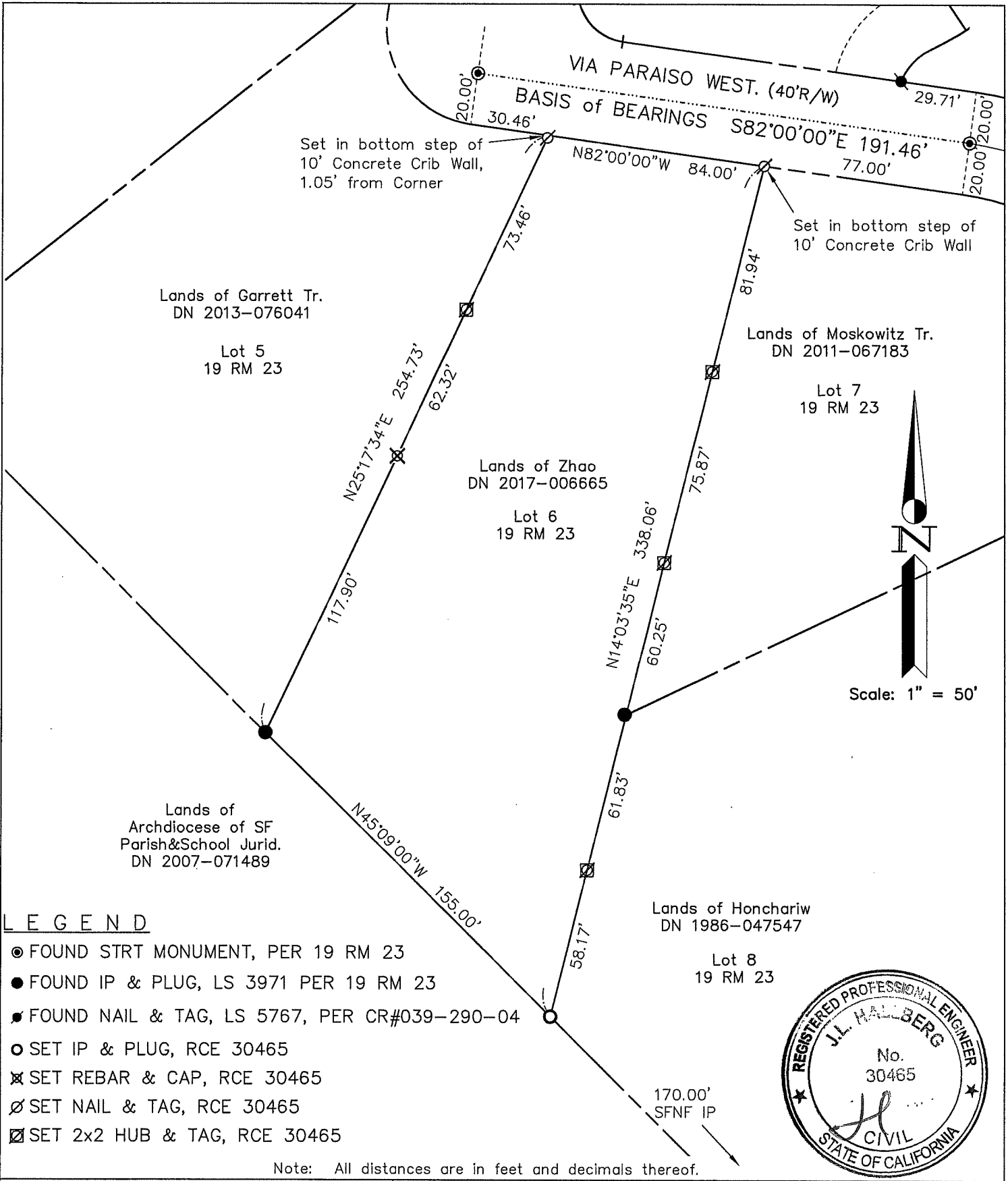
Note: All distances are in feet and decimals thereof.



Linetype Legend	
	Subject parcel
	Parcel boundary
	Old boundary, easement
	Boundary tie
	Right of Way center-line
	Fence
	Basis of Bearings

Date: Aug 2018 Scale: 1" = 50'
J.L. ENGINEERING
 1539 4th ST.
 San Rafael, CA. 94901
 (415) 457-6647
 2019-007\DWG\2019-007-BASE,CREC

Corner Record
 Lands of Zhao - 9 Via Paraiso West
 APN 039-290-06, Tiburon, Marin County, CA
 Sheet: 1 of 2



LEGEND

- FOUND STRT MONUMENT, PER 19 RM 23
- FOUND IP & PLUG, LS 3971 PER 19 RM 23
- FOUND NAIL & TAG, LS 5767, PER CR#039-290-04
- SET IP & PLUG, RCE 30465
- ⊗ SET REBAR & CAP, RCE 30465
- ∅ SET NAIL & TAG, RCE 30465
- ⊠ SET 2x2 HUB & TAG, RCE 30465

Note: All distances are in feet and decimals thereof.



Linetype Legend	
	Subject parcel
	Parcel boundary
	Old boundary, easement
	Boundary tie
	Right of Way center-line
	Fence
	Basis of Bearings

Date: Aug 2018 Scale: 1" = 50'

J.L. ENGINEERING
 1539 4th ST.
 San Rafael, CA. 94901
 (415) 457-6647

2019-007\DWG\2019-007-BASE, CREC

Corner Record

Lands of Zhao - 9 Via Paraiso West
 APN 039-290-06, Tiburon, Marin County, CA
 Sheet: 1 of 2