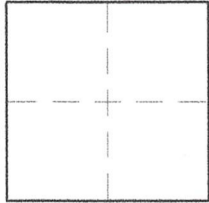


CORNER RECORD

Agency Index 21-014
Document Number 039-280-20
County of MARIN, California

City of TOWN OF TIBURON

Brief Legal Description THE LINE BETWEEN LOTS 10-A & 11-A, 24 PM 27



CORNER TYPE

Government Corner Control
Meander Property
Rancho Other

Date of Survey 12/31/2021

COORDINATES (Optional)

N. _____ E. _____
Elevation _____
Units Metric U.S. Survey Foot
Horizontal Datum _____
Zone _____ Epoch Date _____
Vertical Datum _____

Complies with Public Resources Code §§8801-8819
 Complies with Public Resources Code §§8890-8902

PLS Act Ref: 8765(d) 8771 8773 Other:

Corner / Monument: Left as found Established Rebuilt Pre-Construction
 Found and tagged Reestablished Referenced Post-Construction

Narrative of corner identified and monument as found, set, reset, replaced, or removed:

See sheet #2 for description (s):

SURVEYOR'S STATEMENT

This Corner Record was prepared by me or under my direction in conformance with the Professional Land Surveyors' Act on 1/3/21

Signed [Signature] P.L.S. or R.C.E. No. 8475



COUNTY SURVEYOR'S STATEMENT

This Corner Record was received 1-26-21

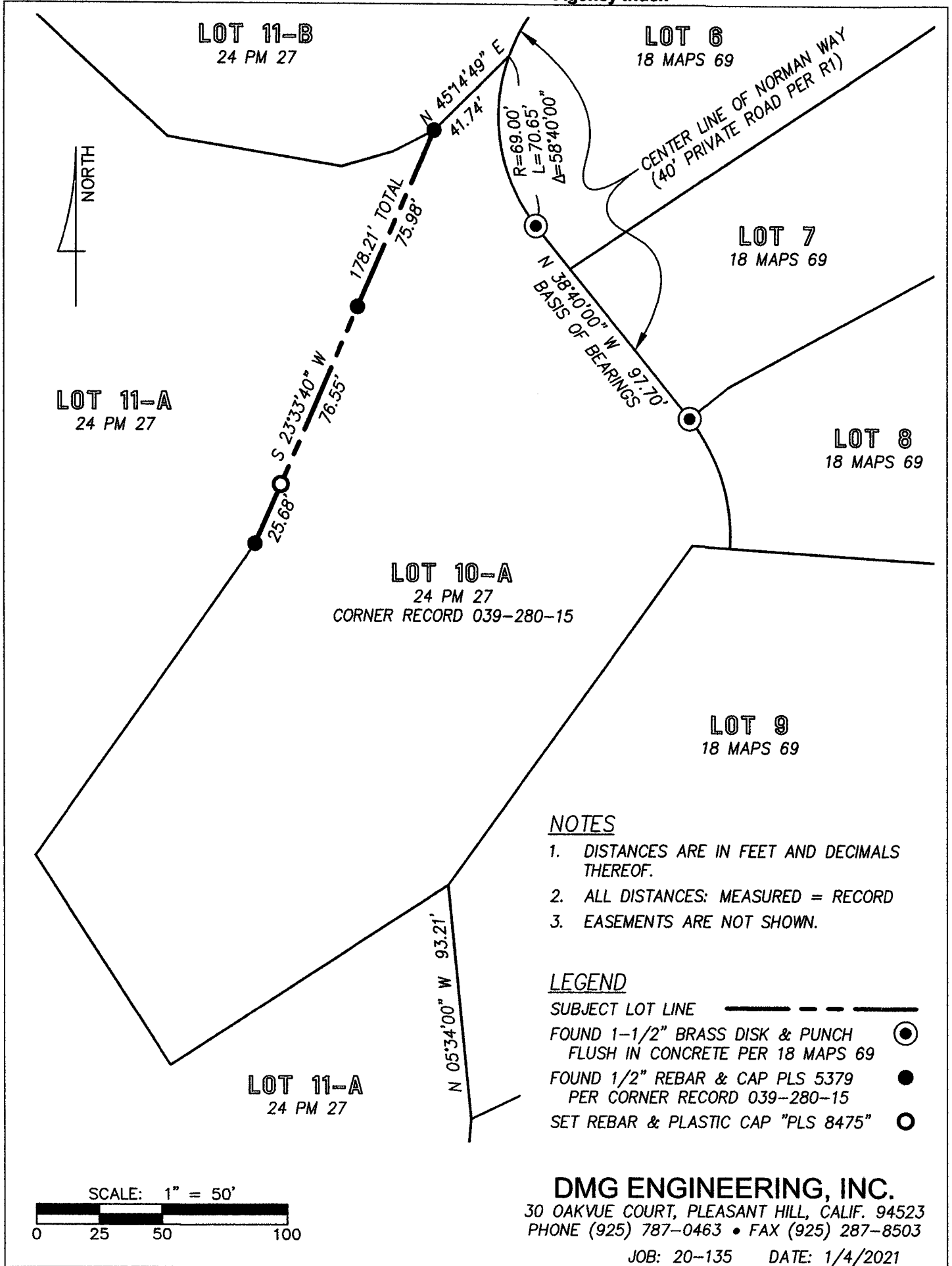
and examined and filed 5-12-21

Signed [Signature] P.L.S. or R.C.E. No. 9292

Title DEPUTY



County Surveyor's Comment _____

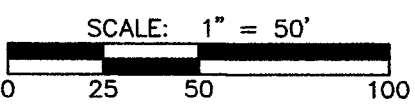


NOTES

1. DISTANCES ARE IN FEET AND DECIMALS THEREOF.
2. ALL DISTANCES: MEASURED = RECORD
3. EASEMENTS ARE NOT SHOWN.

LEGEND

- SUBJECT LOT LINE
- FOUND 1-1/2" BRASS DISK & PUNCH FLUSH IN CONCRETE PER 18 MAPS 69
- FOUND 1/2" REBAR & CAP PLS 5379 PER CORNER RECORD 039-280-15
- SET REBAR & PLASTIC CAP "PLS 8475"



DMG ENGINEERING, INC.
 30 OAKVUE COURT, PLEASANT HILL, CALIF. 94523
 PHONE (925) 787-0463 • FAX (925) 287-8503
 JOB: 20-135 DATE: 1/4/2021