

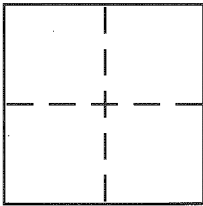
**CORNER RECORD**

Document Number 39-280-08

City of Tiburon

County of Marin, California

Brief Legal Description Lot 8, Norman Estates, 18 RM 69



**CORNER TYPE**

Government Corner  Control   
Meander  Property   
Rancho  Other   
Date of Survey 1/27/15

**COORDINATES (Optional)**

N. \_\_\_\_\_  
E. \_\_\_\_\_  
Zone \_\_\_\_\_ NAD27  NAD83   
NAD83 Epoch \_\_\_\_\_  
Elev. \_\_\_\_\_  
Vert. Datum: NGVD29  NAVD88   
Meas. Units: Metric  Imperial

Corner - Left as found  Found and tagged  Established  Reestablished  Rebuilt

Identification and type of corner found: Evidence used to identify or procedure used to establish or reestablish the corner:

Found monuments as shown on Plat.

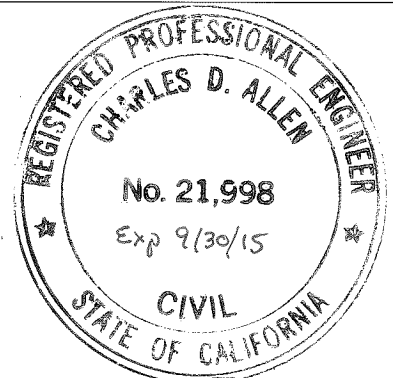
A description of the physical condition of the monument as found and as set or reset:

Set monuments as shown on Plat

**SURVEYOR'S STATEMENT**

This Corner Record was prepared by me or under my direction in conformance with the Land Surveyor's Act on January 28 2015

Signed Charles D. Allen or R.C.E. No. 21998



**COUNTY SURVEYOR'S STATEMENT**

This Corner Record was received FEBRUARY 5<sup>th</sup> 2015

and examined and filed MARCH 25, 2015

Signed Richard G. Simonitch P.L.S or R.C.E.-No. 7821

Title Deputy



County Surveyor's Comment \_\_\_\_\_

PARADISE DRIVE



18 RM 69

LOT 6

LOT 7

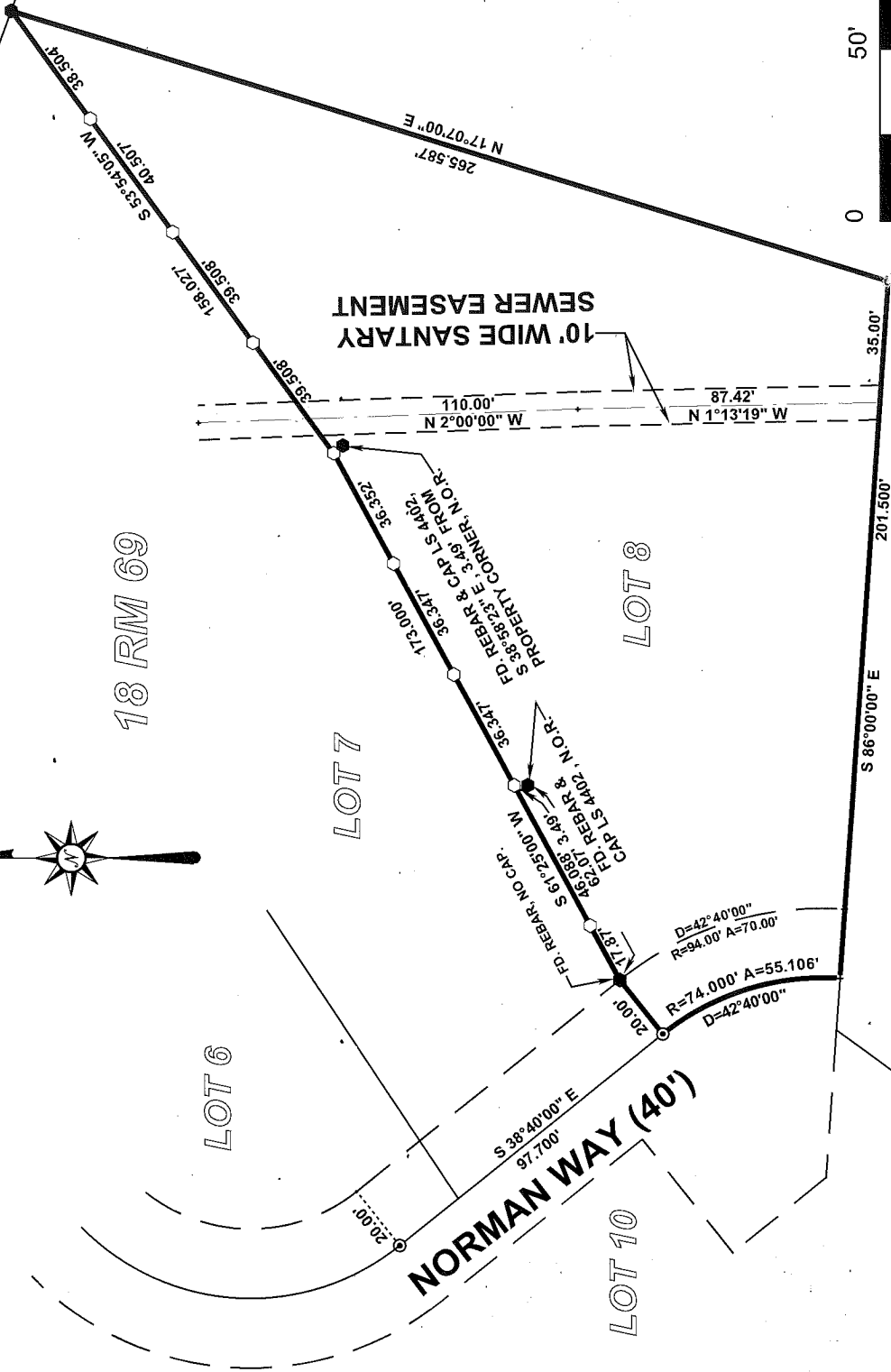
LOT 10

LOT 8

LOT 9

NORMAN WAY (40')

10' WIDE SANSARY SEWER EASEMENT



**LEGEND**

- PROPERTY BOUNDARY LINE.
- FOUND STANDARD MONUMENT.
- FOUND 5/8" REBAR, CAP, RCE 11181, OR AS NOTED.
- SET 5/8" REBAR, W/PLASTIC CAP, RCE 24059.
- N.O.R. NOT OF RECORD.

**NOTE**

ALL DISTANCES ARE IN FEET AND DECIMALS THEREOF.