

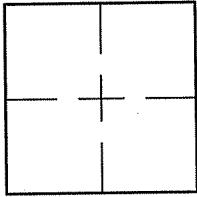
CORNER RECORD

Document Number A.P. 039-252-08

City of TIBURON

County of MARIN, California

Brief Legal Description LOT 1 PER 13 R.M. 75



CORNER TYPE                      COORDINATES (Optional)

Government Corner       Control   
Meander                       Property   
Rancho                       Other   
Date of Survey 8/24/10

N. \_\_\_\_\_  
E. \_\_\_\_\_  
Zone \_\_\_\_\_ NAD27       NAD83   
NAD83 Epoch \_\_\_\_\_  
Elev. \_\_\_\_\_  
Vert. Datum:      NGVD29       NAVD88   
Meas. Units:      Metric       Imperial

Corner-    Left as found     Found and tagged     Established     Reestablished     Rebuilt

Identification and type of corner found: Evidence used to identify or procedure used to establish or reestablish the corner:  
REESTABLISHED A PORTION OF THE EASTERLY LINE OF LOT 1 PER 13 R.M. 75 AND AS SHOWN ON SHEET 2.

A description of the physical condition of the monument as found and as set or reset: SEE SHEET 2.

SURVEYOR'S STATEMENT

This Corner Record was prepared by me or under my direction in conformance with

the Land Surveyor's Act on AUGUST 26, 2010

Signed *Lawrence P. Doyle*      P.L.S. or R.C.E. No. P.L.S. 4694



COUNTY SURVEYOR'S STATEMENT

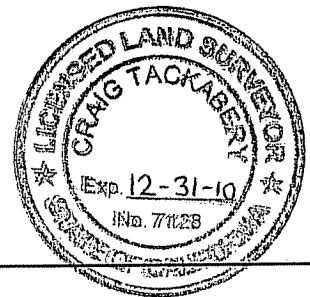
This Corner Record was received SEPTEMBER 27, 2010

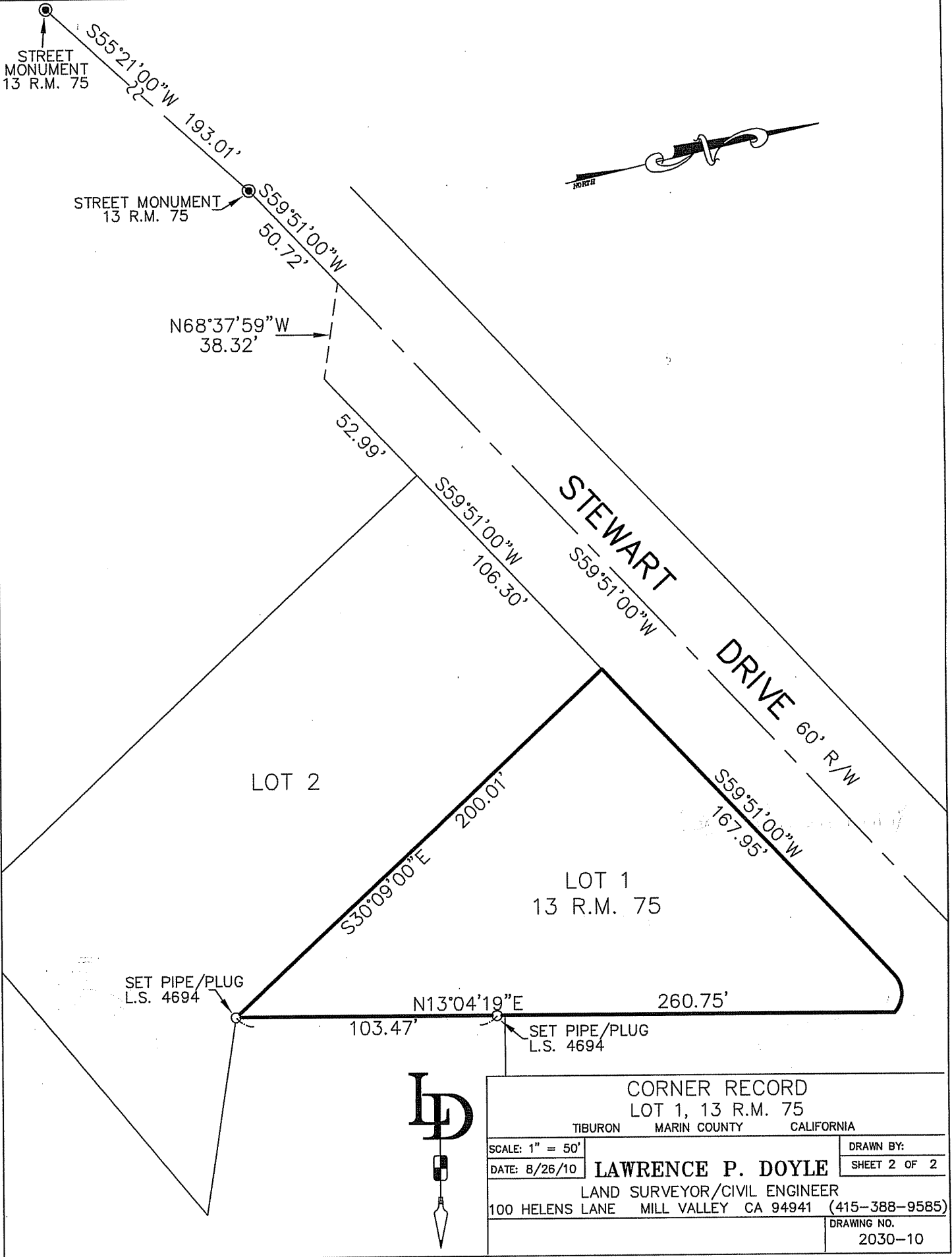
and examined and filed OCTOBER 21, 2010

Signed *Craig Tackabery*      P.L.S. or R.C.E. No. 7128

Title COUNTY SURVEYOR

County Surveyor's Comment \_\_\_\_\_





CORNER RECORD		
LOT 1, 13 R.M. 75		
TIBURON	MARIN COUNTY	CALIFORNIA
SCALE: 1" = 50'	<b>LAWRENCE P. DOYLE</b>	DRAWN BY:
DATE: 8/26/10		SHEET 2 OF 2
LAND SURVEYOR/CIVIL ENGINEER		
100 HELENS LANE MILL VALLEY CA 94941 (415-388-9585)		
		DRAWING NO. 2030-10