

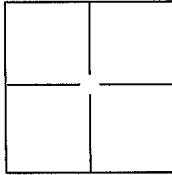
CORNER RECORD

Document Number 039-252-04

City of Tiburon

County of Marin, California

Brief Legal Description Southeast corner lot 17, 13 maps 9



CORNER TYPE

Government Corner Control
Meander Property
Rancho Other

Date of Survey December 2014

COORDINATES(Optional)

N. _____
E. _____
Zone _____ NAD27 NAD83
NAD83 Epoch _____
Elev. _____
Vert. Datum: NGVD29 NADV88
Meas. Units: Metric Imperial

Corner - Left as found Found and tagged Established Reestablished Rebuilt

Identification and type of corner found: Evidence used to identify or procedure used to establish or reestablish the corner:

Held record curve data of found centerline monuments in Stewart Drive per 13 m 9*

*Exhibit sheet 2

A description of the physical condition of the monument as found and as set or reset: _____

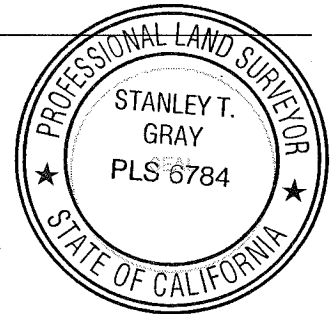
Set 5/8" rebar & cap stamped PLS 6784 at South East corner of lot 17 of 13 M 9*

*Exhibit sheet 2

SURVEYOR'S STATEMENT

This Corner Record was prepared by me or under my direction in conformance with the Land Surveyor's Act on 12 11 8 2014.

Signed [Signature] P.L.S. or R.C.E. No.: 6784



COUNTY SURVEYOR'S STATEMENT

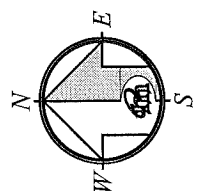
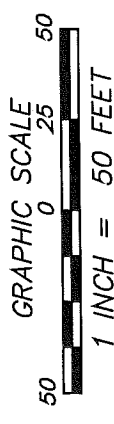
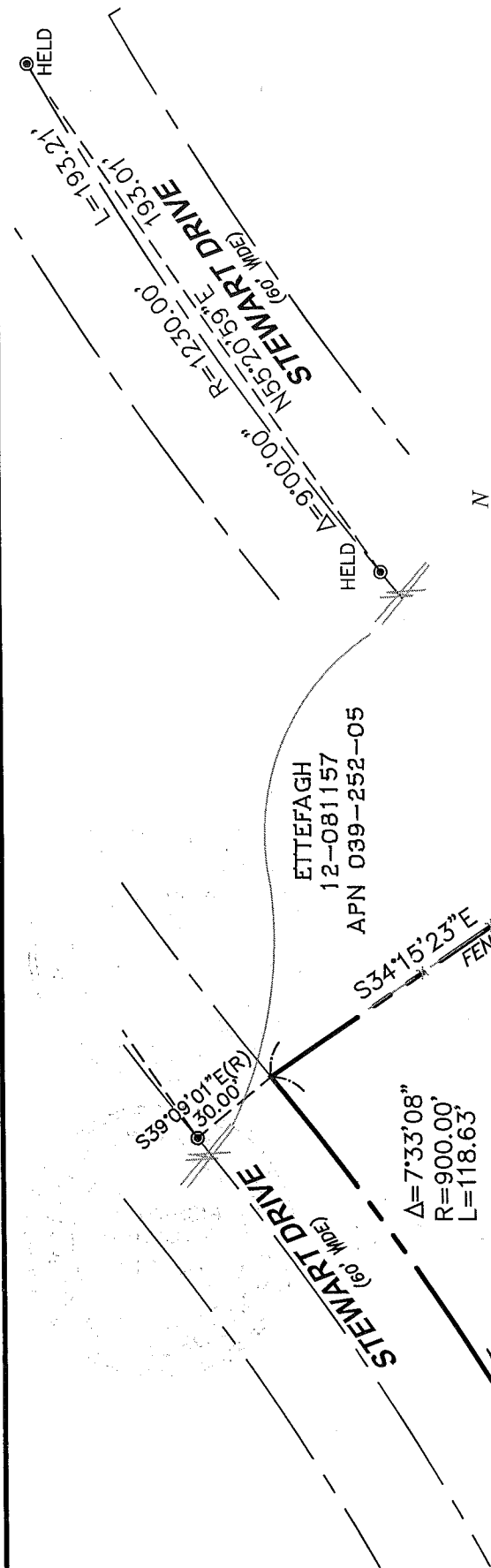
This Corner Record was received DECEMBER 31, 2014 and examined and filed MARCH 13, 2015.

Signed [Signature] P.L.S. or R.C.E. No.: LS7821

Title Deputy

County Surveyor's Comment _____





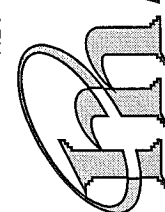
REFERENCE

MAP OF TIBURON KNOLLS, UNIT NO. 2
 FILED IN BOOK 13 OF MAPS, AT PAGE
 9, OFFICIAL RECORDS MARIN COUNTY.

LEGEND

- ✕ FOUND AS NOTED
- ⊙ FOUND STREET MONUMENT
- ⊙ SET 5/8" REBAR WITH CAP,
PLS 6784

NOTE:
 RECORD=MEASURED.



CORNER RECORD

MERIDIAN SURVEYING
 ENGINEERING, INC.
 2958 VAN NESS AVENUE (14137) 777 GRAND AVENUE, #202
 SAN FRANCISCO, CA 94109 SAN RAFAEL, CA 94901
 (415) 440-4131 (415) 456-5450
 surveyrequest@meridiansurvey.com

VAN DUSEN
 10-064723
 APN 039-212-07