

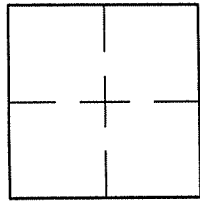
CORNER RECORD

Document Number A.P.# 39-251-17

City of TIBURON

County of MARIN, California

Brief Legal Description LOT 26 PER 3 P.M. 3



CORNER TYPE		COORDINATES (Optional)	
Government Corner	<input type="checkbox"/>	Control	<input type="checkbox"/>
Meander	<input type="checkbox"/>	Property	<input checked="" type="checkbox"/>
Rancho	<input type="checkbox"/>	Other	<input type="checkbox"/>
Date of Survey <u>4/29/06</u>			

N. _____
 E. _____
 Zone _____ NAD27 NAD83
 NAD83 Epoch _____
 Elev. _____
 Vert. Datum: NGVD29 NAVD88
 Meas. Units: Metric Imperial

Corner- Left as found Found and tagged Established Reestablished Rebuilt

Identification and type of corner found: Evidence used to identify or procedure used to establish or reestablish the corner:
ESTABLISHED LOT 26 USING STREET MONUMENTS ON REDDING COURT PER 3 P.M. 3 AND 13 R.M. 9.

A description of the physical condition of the monument as found and as set or reset: SEE SHEET 2.

SURVEYOR'S STATEMENT

This Corner Record was prepared by me or under my direction in conformance with
the Land Surveyor's Act on APRIL 29 2006

Signed Lawrence P. Doyle P.L.S. or R.C.E. No. P.L.S. 4694



COUNTY SURVEYOR'S STATEMENT

This Corner Record was received MAY 15, 2006

and examined and filed MAY 31, 2006

Signed [Signature] P.L.S. or R.C.E. No. 7128

Title COUNTY SURVEYOR

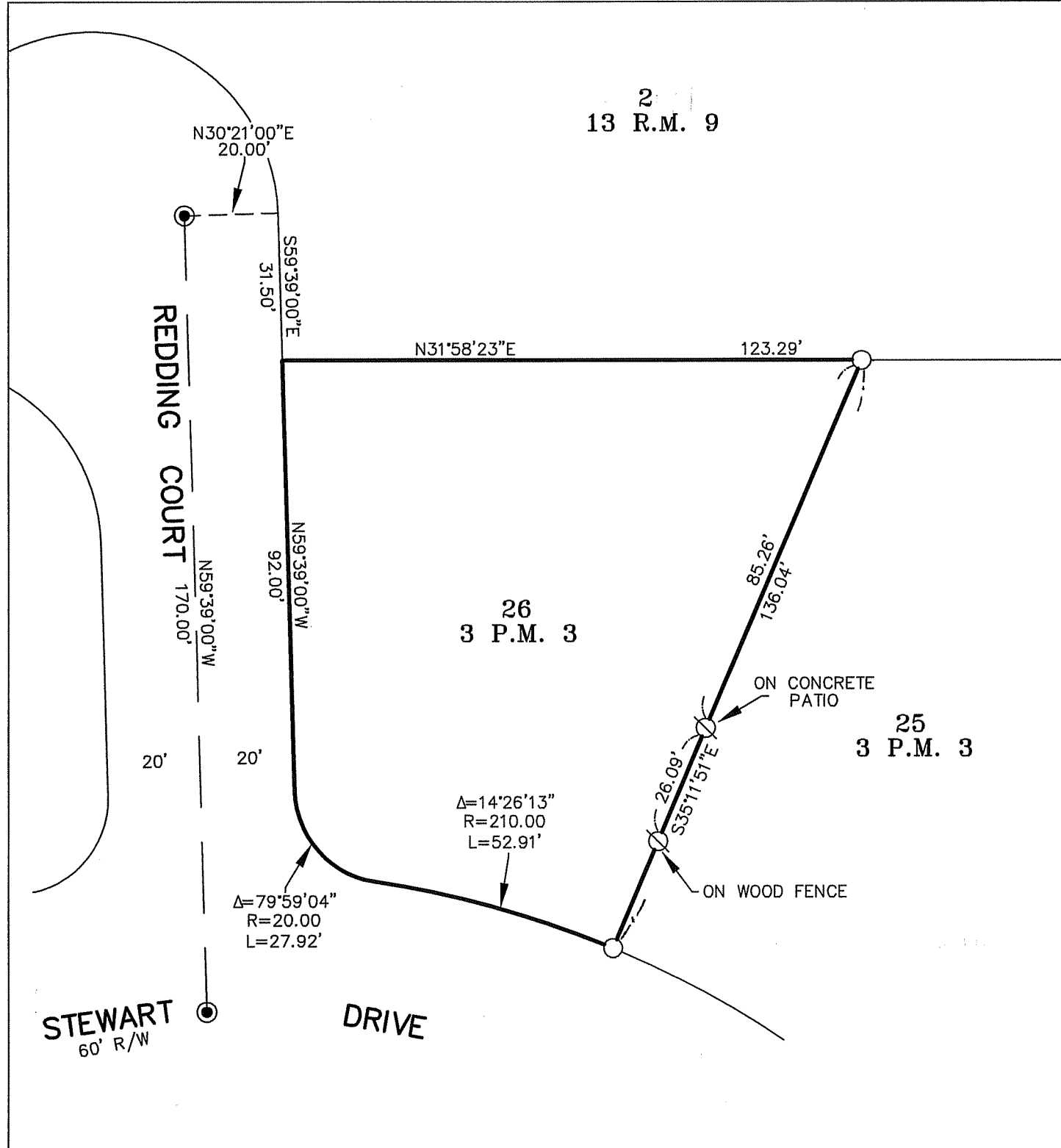
County Surveyor's Comment _____



2
13 R.M. 9

26
3 P.M. 3

25
3 P.M. 3



LEGEND

- FOUND STREET MONUMENT PER 13 R.M. 9
- SET 3/4" PIPE/PLUG L.S. 4694
- ⊗ SET NAIL/TAG L.S. 4694



CORNER RECORD		
LOT 26 / 3 P.M. 3		
TIBURON	MARIN COUNTY	CALIFORNIA
SCALE: 1" = 30'	LAWRENCE P. DOYLE	DRAWN BY:
DATE: 4/29/06		SHEET 2 OF 2
LAND SURVEYOR/CIVIL ENGINEER		
P.O. BOX 1609 MILL VALLEY CA 94942 (415-388-9585)		
		DRAWING NO.
		1509