

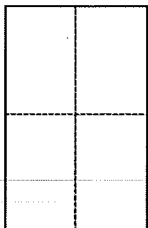
CORNER RECORD

Document Number APN 039-222-19

City of Tiburon

County of Marin, California

Brief Legal Description Lot 2, as shown on resubdivision of "Porto Marino Estates" filed in Book 14 of Maps, at page 86, Marin County Records.



CORNER TYPE

Government Corner Control
Meaneder Property
Rancho Other
Date of Survey 07/23/2015

COORDINATES (Optional)

N. _____
E. _____
Zone _____ NAD27 NAD83
NAD83 Epoch _____
Elev. _____
Vert. Datum: NGVD29 NAVD88
Meas. Units: Metric Imperial

Corner - Left as found Found and tagged Established Reestablished Rebuilt

Identification and type of corner found: Evidence used to identify or procedure used to establish or reestablish the corner:

Found Centerline Monuments being pin in concrete in well monument, in good condition and record position, per Map of "Porto Marino Estates", filed in Book 12 of maps, at page 102, Marin County Records.

A description of the physical condition of the monument as found and as set or reset:

Found 5/8" rebar/cap RCE 19622 at the most northerly corner of above said lot. Set three 1/2" iron pipes, tagged LS7237, at the remaining three corners and one 1/2" iron pipe along the most easterly line as a point on line, tagged LS7237. (see attached exhibit drawing)

SURVEYOR'S STATEMENT

This Corner Record was prepared by me or under my direction in conformance with the Land Surveyor's Act on July 28, 2015
Signed Michael E. Ford P.L.S. or R.C.E. No. LS7237



COUNTY SURVEYOR'S STATEMENT

This Corner Record was received July 31, 2015
and examined and filed DECEMBER 23, 2015
Signed [Signature] P.L.S. or R.C.E. No. 7821

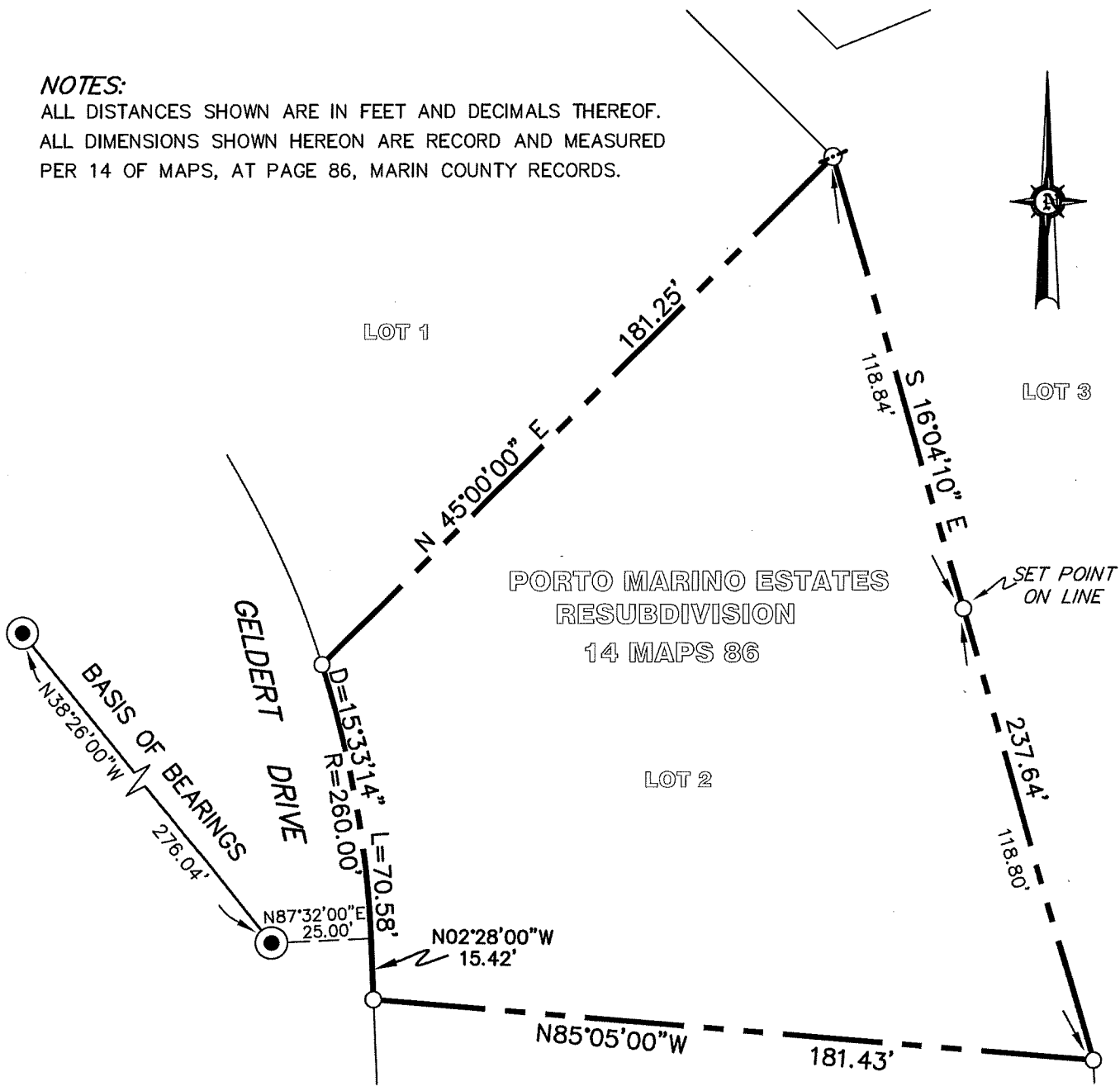


Title County Surveyor

County Surveyor's Comment

NOTES:

ALL DISTANCES SHOWN ARE IN FEET AND DECIMALS THEREOF.
 ALL DIMENSIONS SHOWN HEREON ARE RECORD AND MEASURED
 PER 14 OF MAPS, AT PAGE 86, MARIN COUNTY RECORDS.

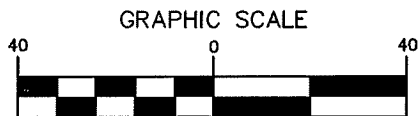


LEGEND

- FOUND CITY MONUMENT (PIN IN CONC.)
- SET 1/2" IRON PIPE, TAGGED LS7237
- ⊗ FOUND 5/8" REBAR & CAP, RCE 19622
 PER CORNER RECORD FILED ON SEPT. 21, 1990

BASIS OF BEARINGS

N38°26'00"W BETWEEN FOUND CITY MONUMENTS,
 AS SHOWN ON MAP OF "PORTO MARINO ESTATES",
 FILED IN BOOK 12 OF MAPS, AT PAGE 102, M.C.R.



(IN FEET)
 1 inch = 40 ft.



2300 bethards drive, suite J
 santa rosa, california 95405
 p 707.542.8513 - f 707.542.1825
 www.michaelfordinc.com