

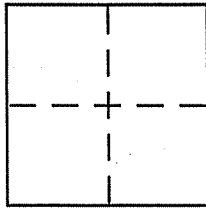
CORNER RECORD

Document Number A.P. 039-221-07

City of TIBURON

County of MARIN, California

Brief Legal Description LOT 18 12 R.M. 102



CORNER TYPE

Government Corner Control
Meander Property
Rancho Other
Date of Survey _____

COORDINATES (Optional)

N. _____
E. _____
Zone _____ NAD27 NAD83
NAD83 Epoch _____
Elev. _____
Vert. Datum: NGVD29 NAVD88
Meas. Units: Metric Imperial

Corner - Left as found Found and tagged Established Reestablished Rebuilt

Identification and type of corner found: Evidence used to identify or procedure used to establish or reestablish the corner:

ESTABLISHED THE PROPERTY CORNERS FROM
STREET MONUMENTS AS SHOWN ON 12 RM 102

A description of the physical condition of the monument as found and as set or reset: _____

SEE PAGE 2

SURVEYOR'S STATEMENT

This Corner Record was prepared by me or under my direction in conformance with the Land Surveyor's Act on 1/3/01

Signed Lawrence P. Doyle P.L.S or R.C.E. No. P.L.S. 4694



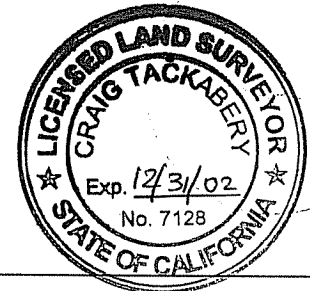
COUNTY SURVEYOR'S STATEMENT

This Corner Record was received 1/31/2001

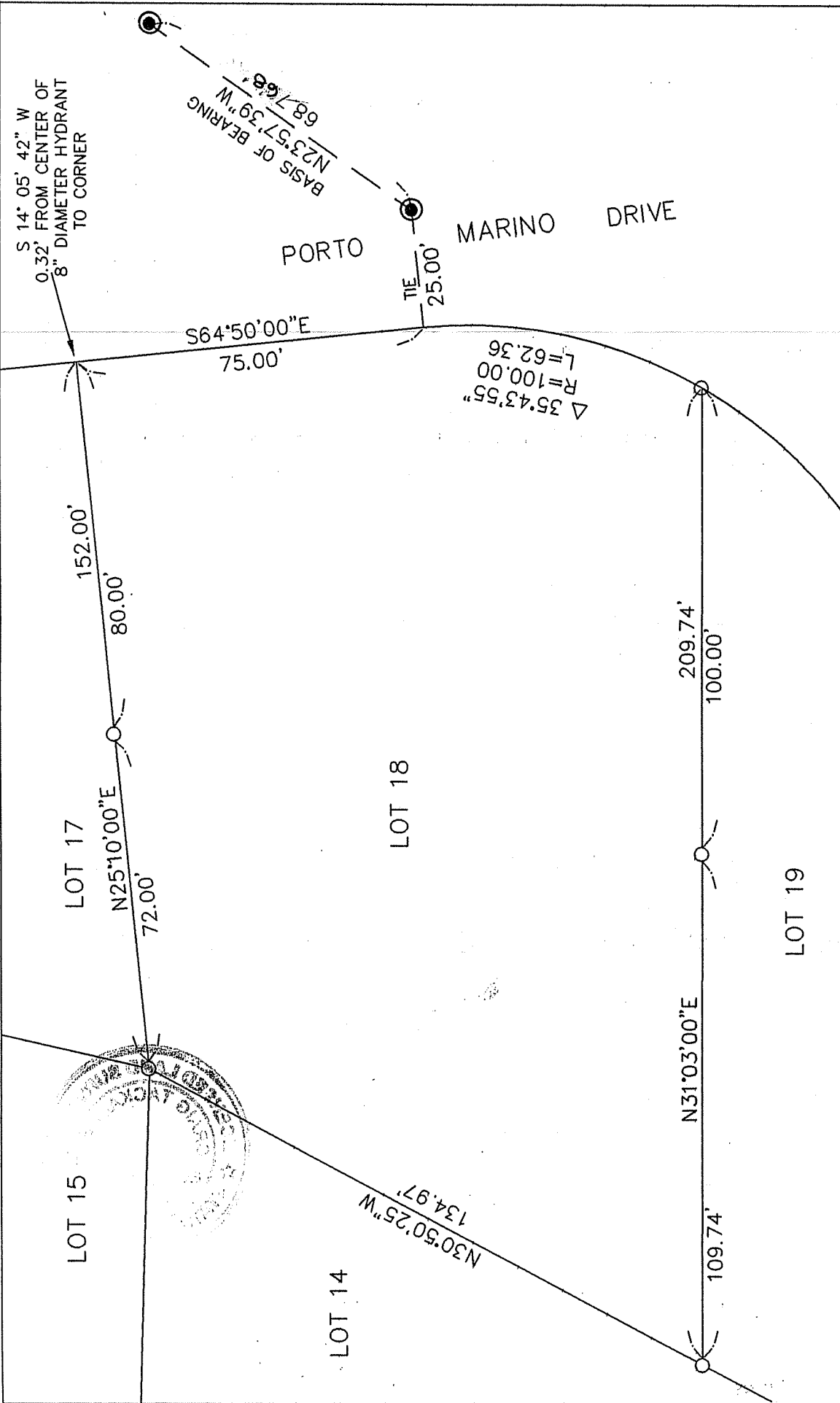
and examined and filed 2/2/2001

Signed [Signature] P.L.S or R.C.E. No. 7128

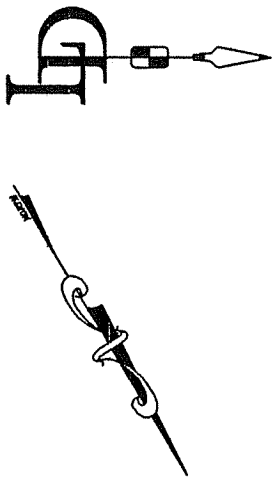
Title DEPUTY



County Surveyor's Comment _____



CORNER RECORD	
LOT 18 12 R.M. 102	
TIBURON	MARIN COUNTY CALIFORNIA
SCALE: 1" = 30'	DRAWN BY: A.O.
DATE: 1/5/00	SHEET 2 OF 2
LAWRENCE P. DOYLE	
LAND SURVEYOR/CIVIL ENGINEER	
P.O. BOX 1609 MILL VALLEY CA 94942 (415-388-9585)	
DRAWING NO. 870A-00	



- LEGEND**
- FOUND STREET MONUMENT
 - SET 3/4" PIPE AND TAG L.S. 4694

