

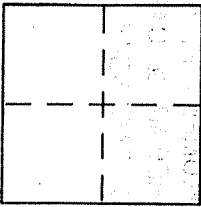
CORNER RECORD

City of Tiburon

Document Number APN 39-212-07

County of MARIN, California

Brief Legal Description _____



CORNER TYPE

Government Corner Control
Meander Property
Rancho Other
Date of Survey 6-05

COORDINATES (Optional)

N. _____
E. _____
Zone _____ NAD27 NAD83
NAD83 Epoch _____
Elev. _____
Vert. Datum: NGVD29 NAVD88
Meas. Units: Metric Imperial

Corner - Left as found Found and tagged Established Reestablished Rebuilt

Identification and type of corner found: Evidence used to identify or procedure used to establish or reestablish the corner:

Retracement of 12 RM 105

A description of the physical condition of the monument as found and as set or reset:

Set 1/2" ReBAR & CAP LS 6344
Set NAIL & TAG 6344

SURVEYOR'S STATEMENT

This Corner Record was prepared by me or under my direction in conformance with the Land Surveyor's Act on 6-30-07

Signed [Signature] P.L.S or R.C.E. No. LS 6344

COUNTY SURVEYOR'S STATEMENT

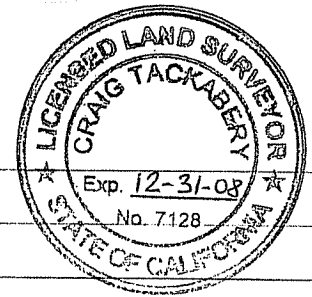
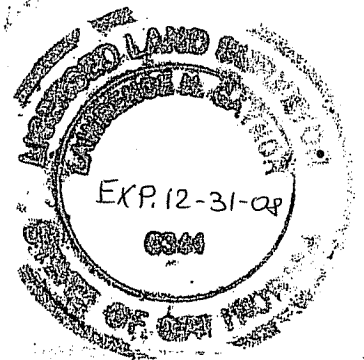
This Corner Record was received JULY 18, 2007

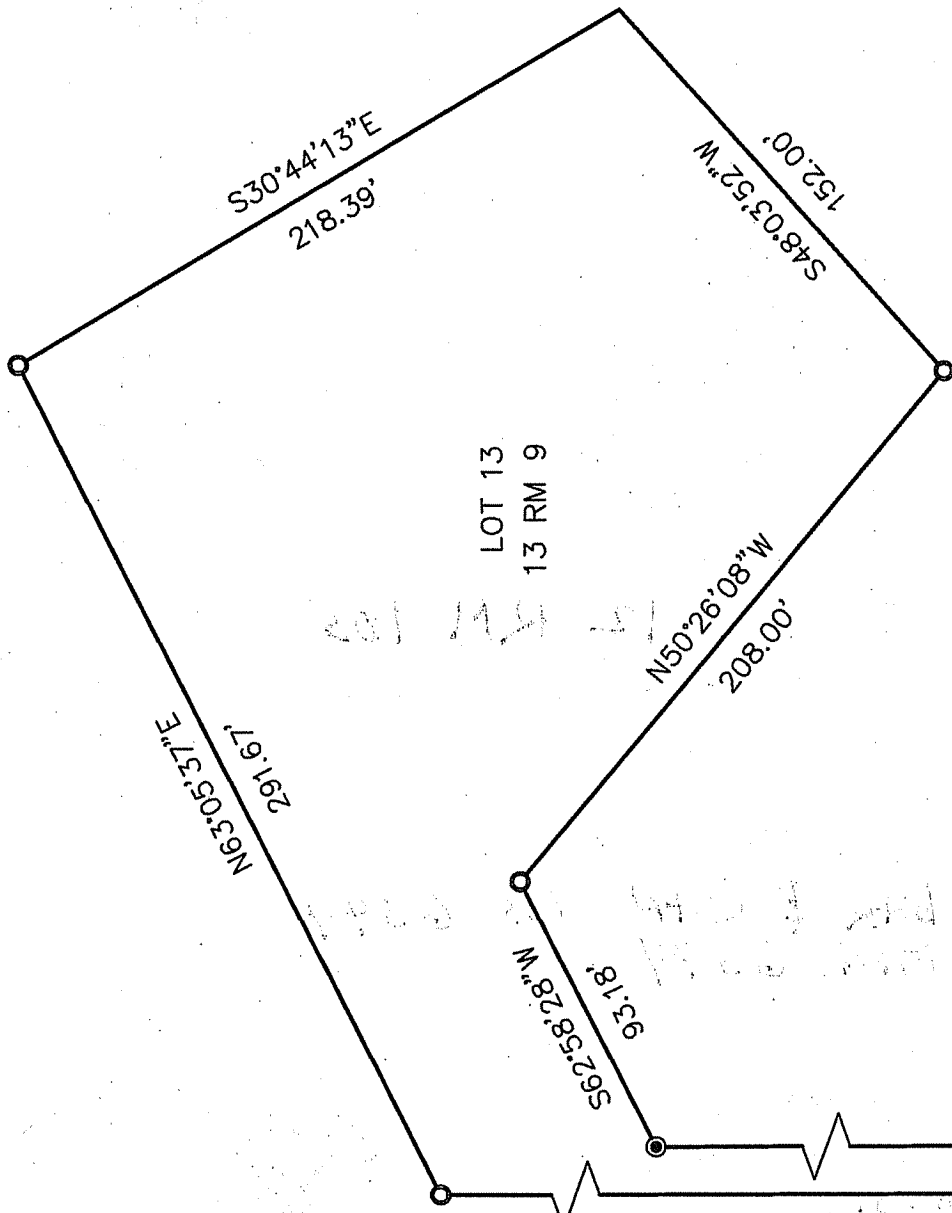
and examined and filed NOVEMBER 26, 2007

Signed [Signature] P.L.S or R.C.E. No. 7128

Title COUNTY SURVEYOR

County Surveyor's Comment _____

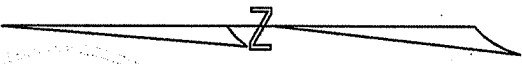




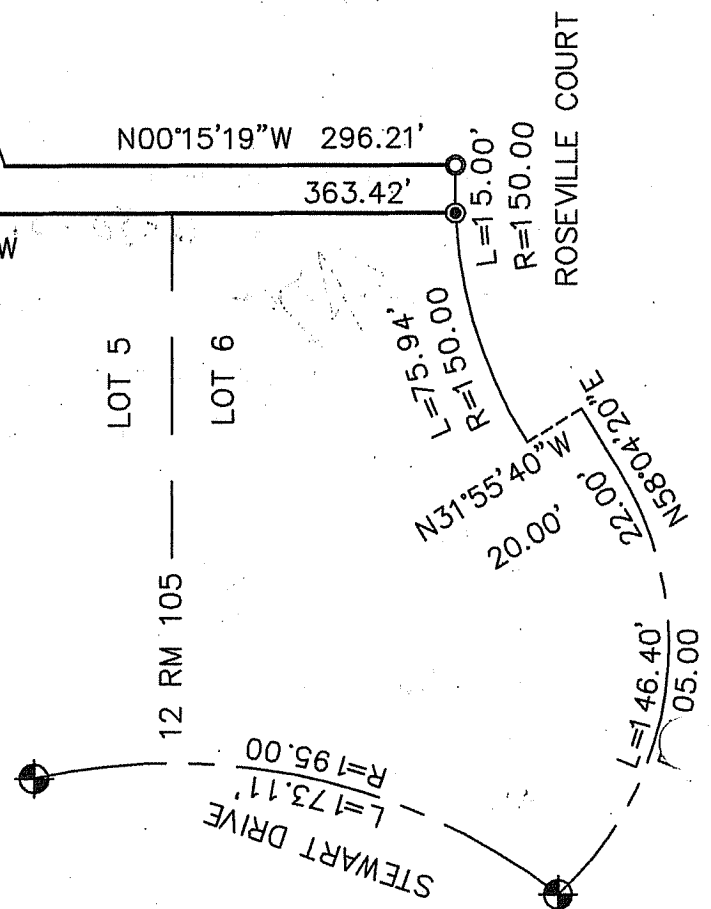
LOT 13
13 RM 9

LEGEND

- FOUND MONUMENT PER 12 RM 105
- SET 1/2" REBAR & CAP LS 6344
- ⊙ SET NAIL & TAG 6344



1" = 60'



LOT 5

LOT 6

ROSEVILLE COURT

12 RM 105

STEWART DRIVE
L=173.11'
R=195.00'

L=75.94'
R=150.00'

L=15.00'
R=150.00'

N31°55'15\"/>

20.00'

N58°04'20\"/>

L=146.40'
R=105.00'

N00°15'19\"/>

363.42'

N00°15'19\"/>

S62°58'28\"/>

93.18'

N50°26'08\"/>

208.00'

S48°03'52\"/>

152.00'

S30°44'13\"/>

218.39'

N63°05'37\"/>

291.67'