

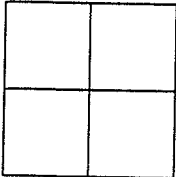
# CORNER RECORD

Document Number \_\_\_\_\_ APN: 039-211-06

City of TIBURON

County of Marin State of California.

Brief Legal Description: PCL 3, 5 PM 13



### CORNER TYPE:

- Government Corner  Control
- Meander  Property
- Rancho  Other
- Date of Survey \_\_\_\_\_

### COORDINATES:

[Optional]  
 N> \_\_\_\_\_  
 E> \_\_\_\_\_  
 Zone \_\_\_\_\_ Datum \_\_\_\_\_  
 Elev> \_\_\_\_\_

CORNER: ----- Left as found  Found & Tagged  Established  Reestablished  Rebuilt

Identification & Type of Corner Found: Evidence used to identify or procedure used to establish or reestablish the corner:

FOUND STREET MONUMENTS PER MAP 5 PM 13, RETRACED ORIGINAL SURVEY.  
FND 5/8" REBAR & CAP RCE 18220 AS NOTED ON DWG.

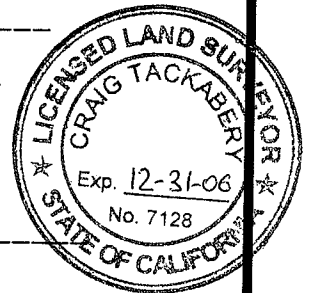
A description of the physical condition of the monument as found and as set or reset:  
 Original corners not found: Set points as shown on reverse.



### SURVEYOR'S STATEMENT:

The corner record was prepared by me or under my direction in conformance with  
 the Land Surveyors' Act on JUNE 2005

Signed: Douglas J. Matteson RCE# 18200



### COUNTY SURVEYORS STATEMENT:

This corner record was received: JULY 7 2005  
 and filed AUGUST 9 2005

Signed: [Signature] Title: COUNTY SURVEYOR

COUNTY SURVEYOR'S COMMENT \_\_\_\_\_  
 \_\_\_\_\_  
 \_\_\_\_\_

C:\E\_DRIVE\Old\75\HALSEY\SURVEYOR\Halsey-COR.dwg, 07/06/2005 10:58:36 AM LaserJet 1200 Series PCL 6

C:\E\_DRIVE\OldDwgs\HALSEY\SURVEYOR\Halsey-COR.dwg, 07/06/2005 10:57:54 AM, HP LaserJet 1200 Series PCL 6

### LEGEND

- SET OR FOUND MONUMENT AS NOTED
- ✕ SET 5/8" REBAR & CAP RCE 18200 UNLESS NOTED OTHERWISE
- PROPERTY LINES
- FOUND STREET MONUMENT

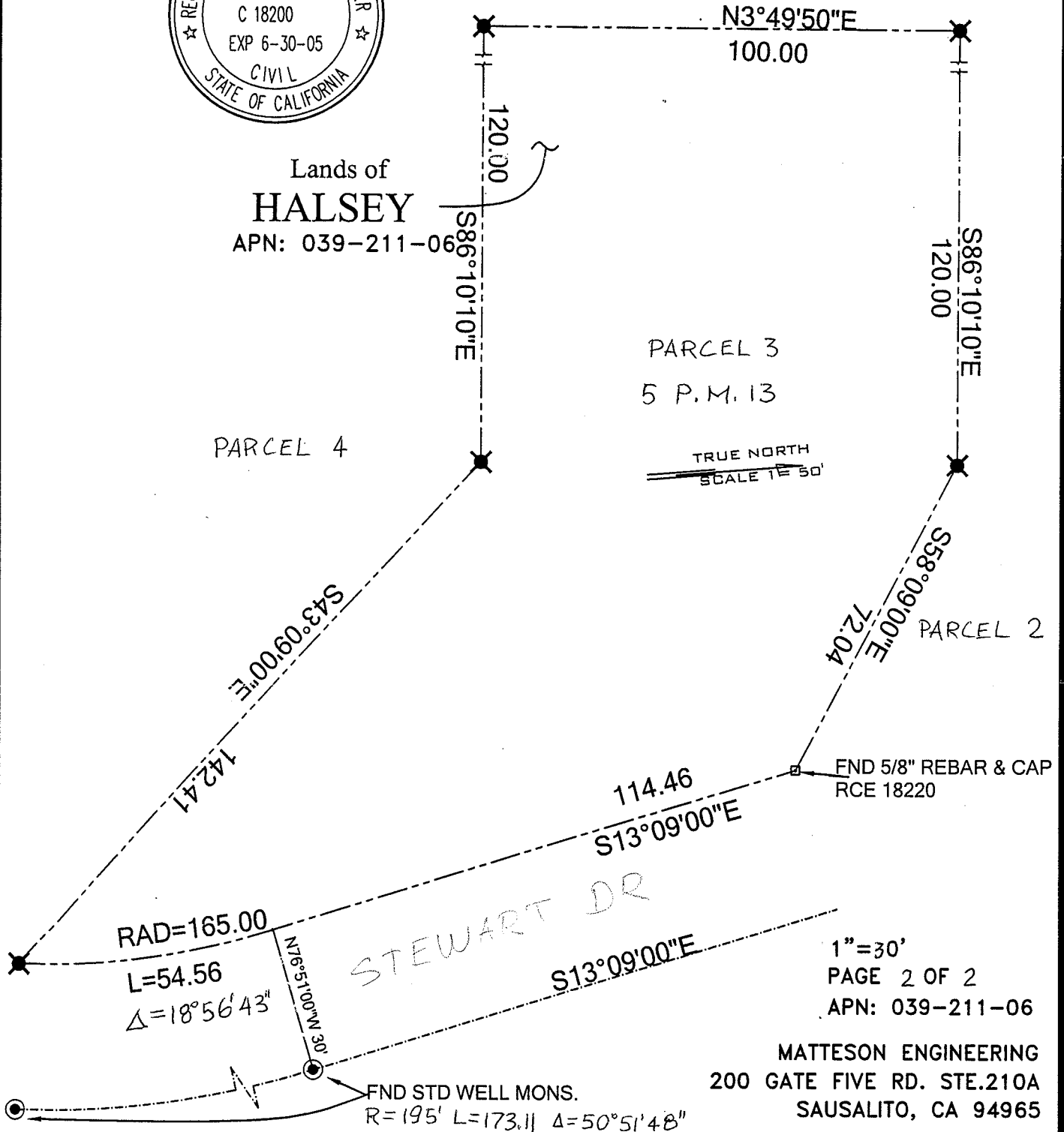


Lands of  
**HALSEY**  
APN: 039-211-06

PARCEL 4

PARCEL 3  
5 P.M. 13

PARCEL 2



1"=30'

PAGE 2 OF 2

APN: 039-211-06

MATTESON ENGINEERING  
200 GATE FIVE RD. STE.210A  
SAUSALITO, CA 94965