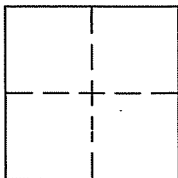


# CORNER RECORD

Document Number APN 39-191-08

City of TIBURON and County of MARIN, California

Brief Legal Description: LOT 4 OF THAT CERTAIN MAP ENTITLED "MAP OF PARADISE ACRES", FILED APRIL 24, 1961 IN VOLUME 10 OF MAPS AT PAGE 104.



**CORNER TYPE**

Government Corner  Control   
Meander  Property   
Rancho  Other

Date of Survey 1/14/11

**COORDINATES (Optional)**

N: \_\_\_\_\_  
E: \_\_\_\_\_  
Zone: \_\_\_\_\_ NAD 27  NAD 83   
Elev: \_\_\_\_\_  
Vert. Datum: NGVD29  NAVD88   
Meas. Units: Metric  Imperial

**CORNER --** LEFT AS FOUND FOUND AND TAGGED ESTABLISHED REESTABLISHED REBUILT

Identification and type of corner found: Evidence used to identify or procedure used to establish or reestablish the corner:

**FOUND STANDARD WELL MONUMENT PER 10-RM-20.**

A description of the physical condition of the monument as found and as set or reset: ORIGINAL CORNERS NOT FOUND. SET POINTS AS SHOWN ON REVERSE.

**SURVEYOR'S STATEMENT:**

The corner record was prepared by me or under my direction in conformance with

the Land Surveyors' Act on JANUARY 21ST 2011

Signed: Michael Lache L.S.# 3602



**COUNTY SURVEYOR'S STATEMENT:**

The corner record was received JANUARY 26, 2011

and examined and filed FEBRUARY 24, 2011

Signed: [Signature] R.C.E. or L.S. No. 7128

Title: COUNTY SURVEYOR

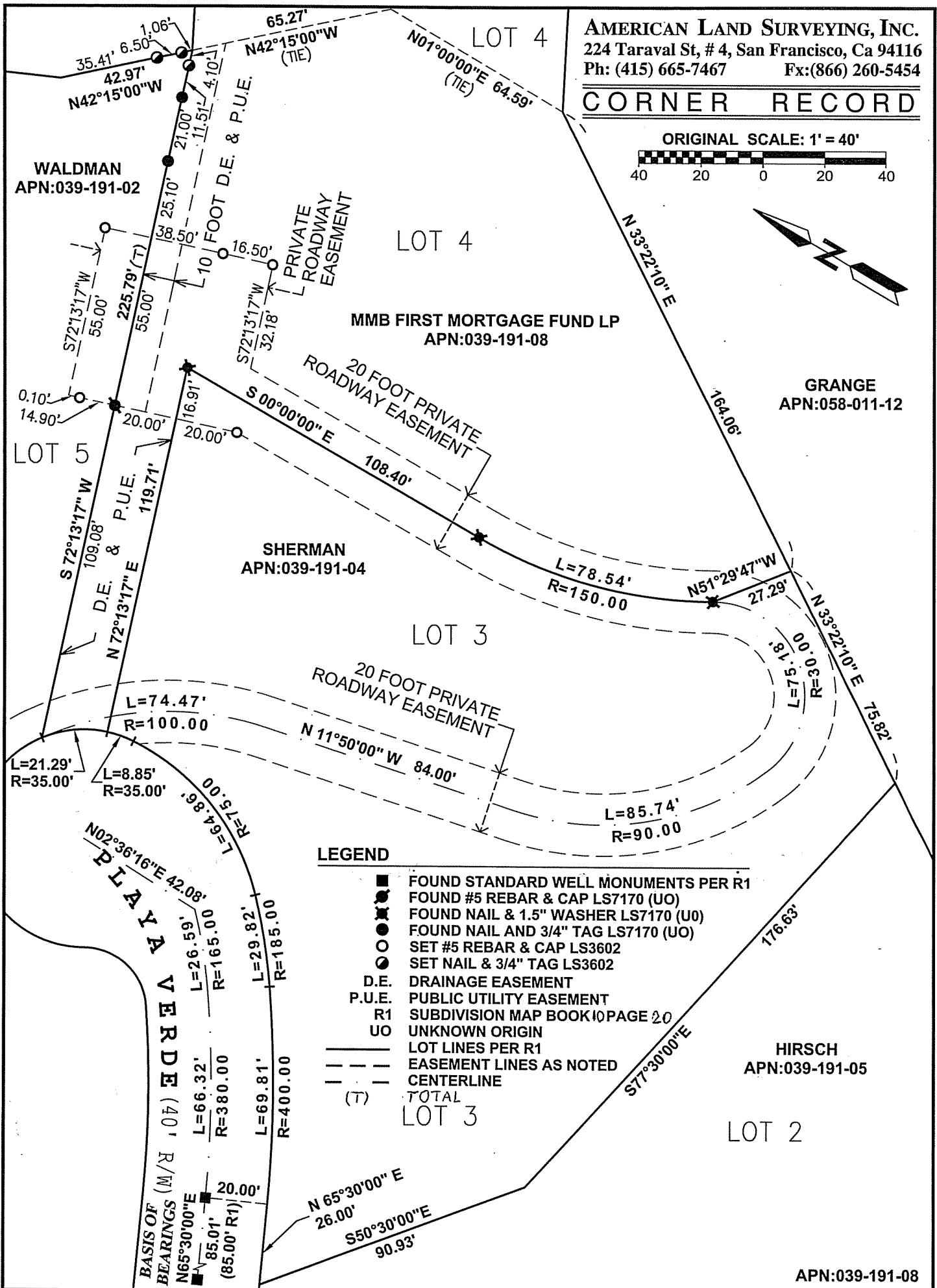
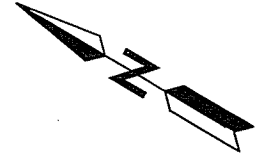
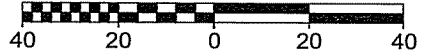


**COUNTY SURVEYOR'S COMMENT:** \_\_\_\_\_

AMERICAN LAND SURVEYING, INC.  
 224 Taraval St, # 4, San Francisco, Ca 94116  
 Ph: (415) 665-7467 Fx: (866) 260-5454

**CORNER RECORD**

ORIGINAL SCALE: 1" = 40'



**LEGEND**

- FOUND STANDARD WELL MONUMENTS PER R1
- FOUND #5 REBAR & CAP LS7170 (UO)
- ⊗ FOUND NAIL & 1.5" WASHER LS7170 (UO)
- FOUND NAIL AND 3/4" TAG LS7170 (UO)
- SET #5 REBAR & CAP LS3602
- SET NAIL & 3/4" TAG LS3602
- D.E. DRAINAGE EASEMENT
- P.U.E. PUBLIC UTILITY EASEMENT
- R1 SUBDIVISION MAP BOOK 10 PAGE 20
- UO UNKNOWN ORIGIN
- LOT LINES PER R1
- - - EASEMENT LINES AS NOTED
- CENTERLINE
- (T) TOTAL