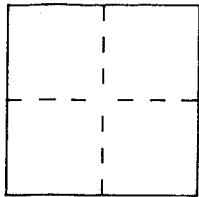


CORNER RECORD

City of TIBURON
Brief Legal Description LOT 6 OF 10 RM 104

Document Number AP# 039-191-01
County of MARIN, California



CORNER TYPE

- Government Corner
- Meander
- Rancho
- Date of Survey FEB, 2005
- Control
- Property
- Other

COORDINATES
(Optional)

N. _____
E. _____
Zone _____ Datum _____
Elev. _____

Corner — Left as found Found and tagged Established Reestablished Rebuilt

Identification and type of corner found: Evidence used to identify or procedure used to establish or reestablish the corner:
FOUND STD. STREET MONUMENTATION AS BASIS OF BEARING N 65° 30' 00" E
DIST 85.00'

A description of the physical condition of the monument as found and as set or reset:
FOUND STD. STREET MONUMENTS, DO EXIST. CORNER MONUMENT W/ IP / PLUG
FOUND IP ON LINE & SET IP W/ PLUG AS SHOWN

SURVEYOR'S STATEMENT

This Corner Record was prepared by me or under my direction in conformance with the Land Surveyors' Act on 10 FEB 2005

Signed [Signature] L.S. or R.C.E. Number 30465



COUNTY SURVEYOR'S STATEMENT

This Corner Record was received FEBRUARY 15, 2005 and examined and filed MARCH 29, 2005

Signed [Signature] Title COUNTY SURVEYOR



County Surveyor's Comment _____

LEGEND

- ⊙ FOUND STD. STREET MONUMENT PER 29 OS 97
- FOUND 3/4" I.P. & PLASTIC PLUG, LS 3971, PER 29 OS 97
- SET 3/4" I.P. & PLASTIC PLUG, RCE 30465
- ✕ SET 'X' CUT IN ELEVATED DRIVEWAY

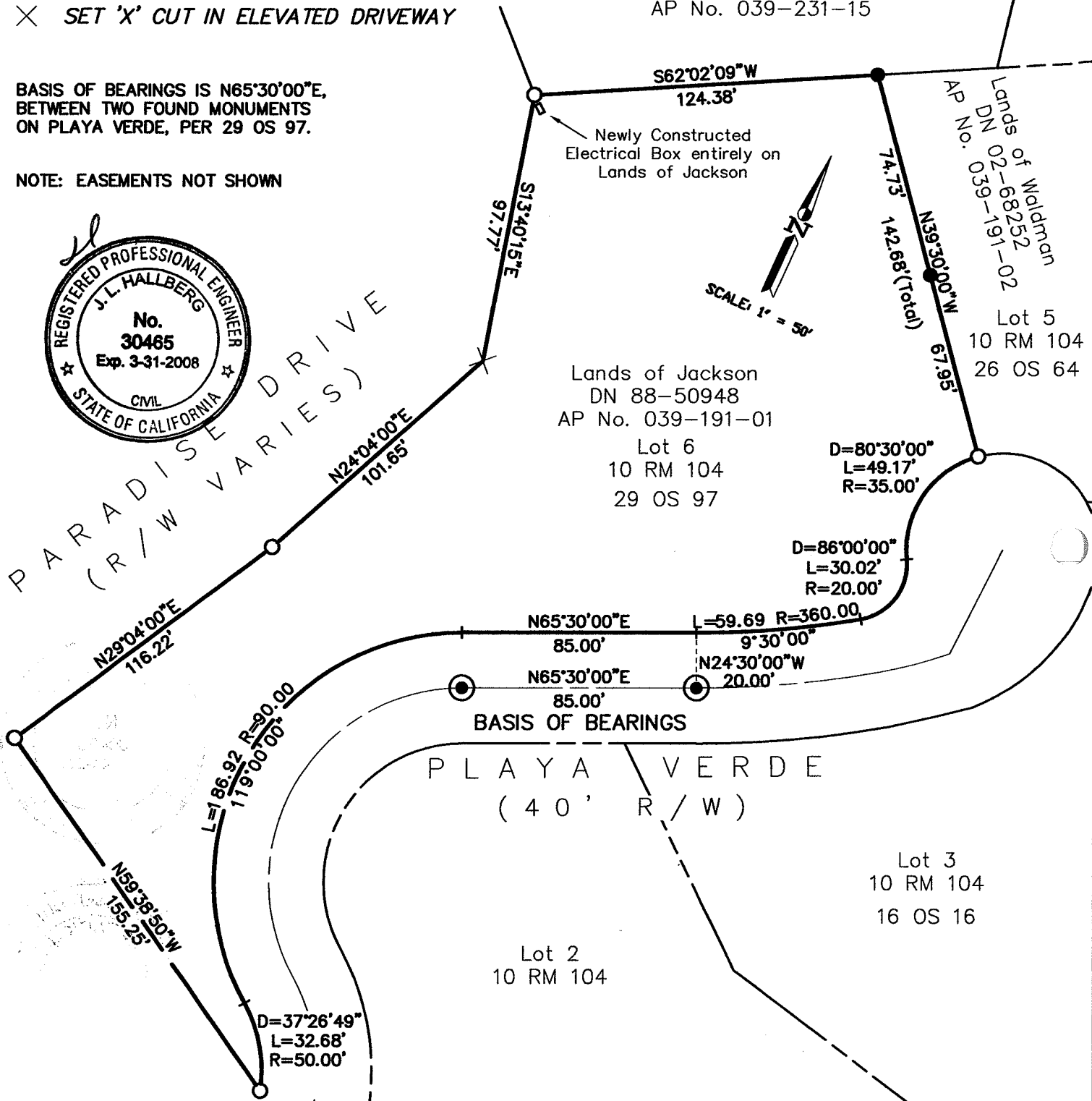
Lands of Marks
DN 96-30569
AP No. 039-231-15

BASIS OF BEARINGS IS N65°30'00"E,
BETWEEN TWO FOUND MONUMENTS
ON PLAYA VERDE, PER 29 OS 97.

NOTE: EASEMENTS NOT SHOWN



PARADISE DRIVE
(R/W VARIES)



Lands of Jackson
DN 88-50948
AP No. 039-191-01
Lot 6
10 RM 104
29 OS 97

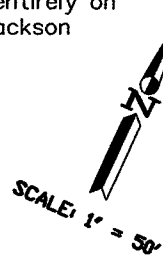
Lands of Waldman
DN 02-68252
AP No. 039-191-02
Lot 5
10 RM 104
26 OS 64

Lot 3
10 RM 104
16 OS 16

Lot 2
10 RM 104

PLAYA VERDE
(40' R/W)

BASIS OF BEARINGS



Note: All distances are in feet and decimals thereof.

SHEET	1	OF	1
SCALE:	1" = 50'	DESIGN:	MDH
DATE:	2-10-05	DRAWN:	MDH
FILE:	2005-009	CHECKED:	J.L.H

J.L. ENGINEERING
CIVIL ENGINEERS-LAND SURVEYORS
1539 4th ST., SAN RAFAEL, CA. 94901 (415) 457-6647

Corner Record
Lands of Jackson - 3668 Paradise Drive
APN 039-191-01, Tiburon, Marin County, CA