

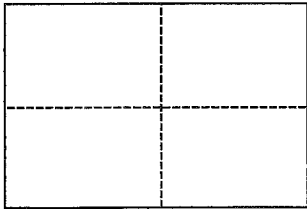
APN 039-171-16

CORNER RECORD

Document Number **2010-0046963**

City of TIBURON County of MARIN California

Brief Legal Description PARCEL A AS SHOWN ON 7 PM 78, MARIN COUNTY RECORDS



CORNER TYPE

**COORDINATES
(Optional)**

Government Corner	Control	North	_____
Meander	Property X	East	_____
Rancho	Other	Zone	_____ Datum _____
Date of Survey	AUGUST 8, 2015	Elev.	_____

Corner _____ Left as found Found and tagged Established Reestablished Rebuilt

Identification and type of corner found: Evidence used to identify or procedure used to establish or reestablish the corner:

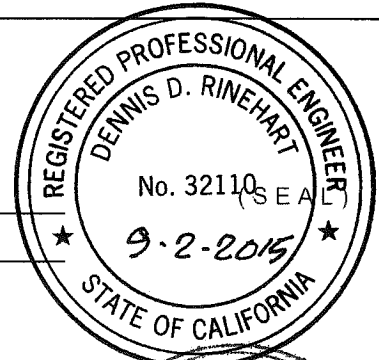
FOUND STREET MONUMENTATION AS SHOWN ON THAT CERTAIN MAP ENTITLED "LANDS OF FLANAGAN" RECORDED IN BOOK 7 OF PARCEL MAPS, PAGE 78 AS BASIS OF BEARING TO ESTABLISH PARCEL A CORNERS AND POINTS ON CURVE.

A description of the physical condition of the monument as found and as set or reset: TYPICALLY SET 60D NAILS AT PROPERTY LINE CORNERS, BEGNING OF CURVES, POINTS ON CURVE, END OF CURVES AND SET 1 GINNEY AND TACK ON PROPERTY CORNER AS SHOWN ON ATTACHED CORNER RECORD EXHIBIT.

SURVEYOR'S STATEMENT

This Corner Record was prepared by me or under my direction in conformance with the Land Surveyors' Act on 9-2-2015

Signed Dennis D. Rinehart L.S. or R.C.E. Number RCE 32110



COUNTY SURVEYOR'S STATEMENT

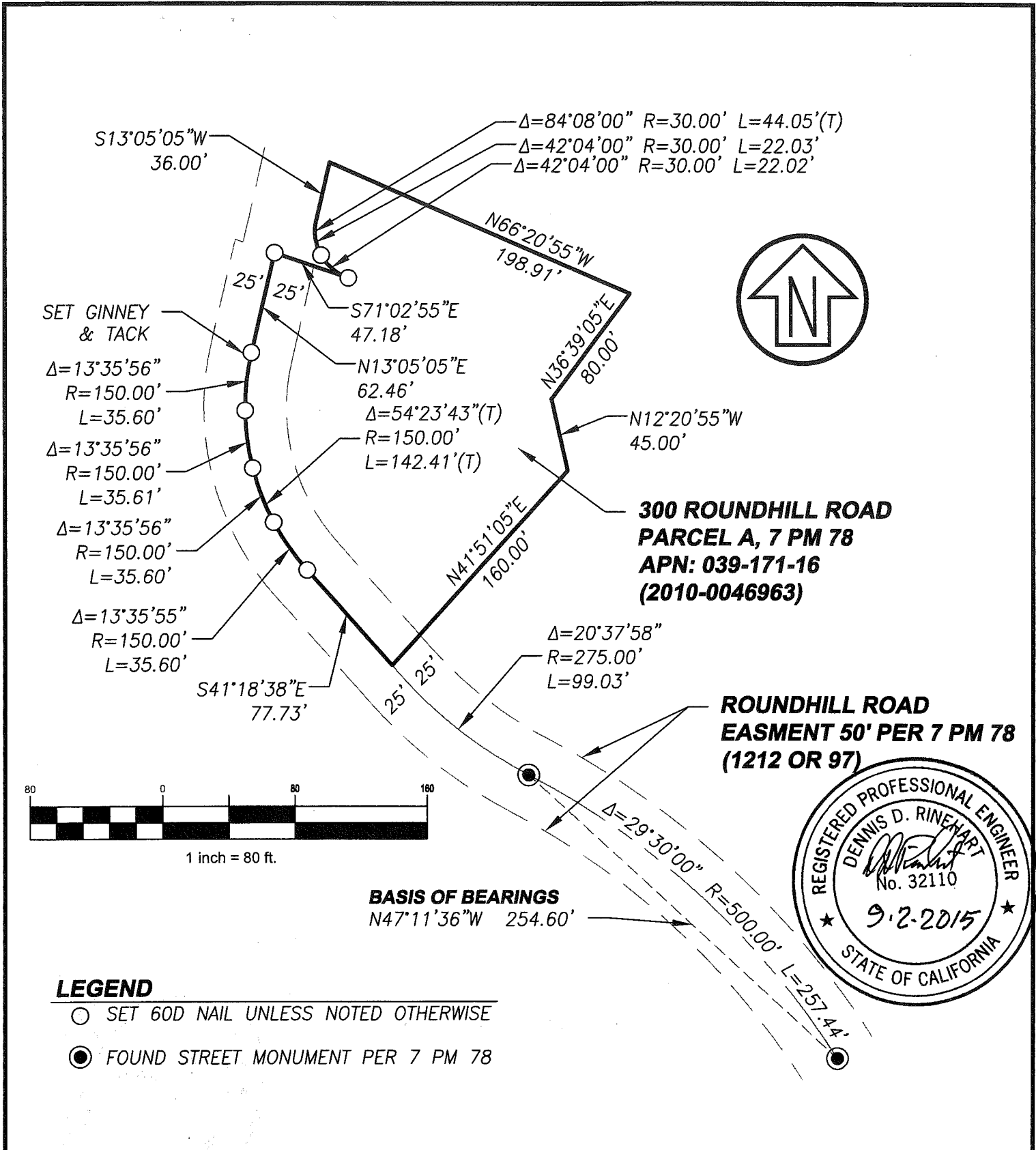
This Corner Record was received SEPTEMBER 15, 2015

and examined and filed OCTOBER 15, 2015

Signed Richard G. Simonitch Title County Surveyor



County Surveyor's Comment _____



CSW | ST2

CSW/Stuber-Stroeh Engineering Group, Inc.
 Civil & Structural Engineers | Surveying & Mapping | Environmental Planning
 Land Planning | Construction Management
 45 Leveroni Court Novato, CA 94949
 tel: 415.883.9850 fax: 415.883.9835
 http://www.cswst2.com © 2014

Rev. -	Date: 8/18/15
Job No. 3133802	Scale: 1" = 80'

**300 ROUNDHILL ROAD
CORNER RECORD**

APN: 039-171-16

TIBURON MARIN COUNTY CALIFORNIA