

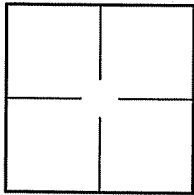
**CORNER RECORD**

Document Number A.P.# 039-161-38

City of TIBURON

County of MARIN, California

Brief Legal Description PARCEL 1B PER 24 P.M. 57



**CORNER TYPE**                      **COORDINATES (Optional)**

Government Corner       Control   
Meander                       Property   
Rancho                       Other   
Date of Survey 10/25/2010

N. \_\_\_\_\_  
E. \_\_\_\_\_  
Zone \_\_\_\_\_ NAD27       NAD83   
NAD83 Epoch \_\_\_\_\_  
Elev. \_\_\_\_\_  
Vert. Datum:      NGVD29       NAVD88   
Meas. Units:      Metric       Imperial

Corner-    Left as found     Found and tagged     Established     Reestablished     Rebuilt

Identification and type of corner found: Evidence used to identify or procedure used to establish or reestablish the corner:  
FOUND CORNERS OF PARCEL 1B PER 24 P.M. 57, SET POINT ON THE NORTHWESTERLY AND SOUTHWESTERLY LINES AS SHOWN ON SHEET 2

A description of the physical condition of the monument as found and as set or reset: SEE SHEET 2.

**SURVEYOR'S STATEMENT**

This Corner Record was prepared by me or under my direction in conformance with  
the Land Surveyor's Act on OCTOBER 25 2010

Signed Lawrence P. Doyle      P.L.S. or R.C.E. No. P.L.S. 4694



**COUNTY SURVEYOR'S STATEMENT**

This Corner Record was received DECEMBER 8, 2010

and examined and filed JANUARY 6, 2011

Signed [Signature]      P.L.S. or R.C.E. No. 7128

Title COUNTY SURVEYOR

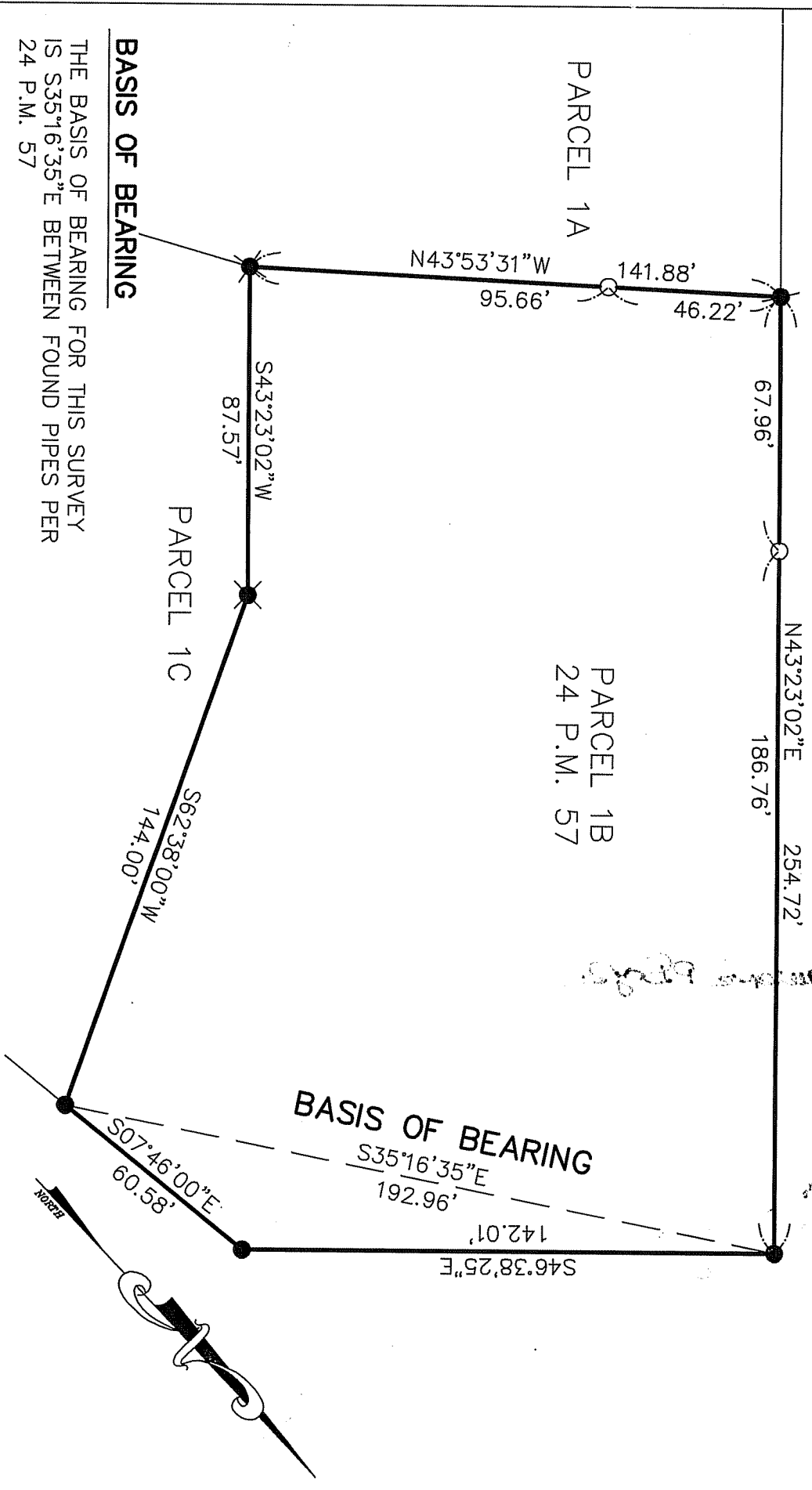


County Surveyor's Comment \_\_\_\_\_

19 R.M. 23

PARCEL 1A

PARCEL 1B  
24 P.M. 57



**BASIS OF BEARING**

THE BASIS OF BEARING FOR THIS SURVEY IS S35°16'35"E BETWEEN FOUND PIPES PER 24 P.M. 57

**LEGEND**

- FOUND PIPE & TAG, R.C.E. 8389 (PER 24 P.M. 57)
- ✕ FOUND PIPE & PLUG, L.S. 7623 (PER CORNER RECORD A.P. 039-161-38)
- FOUND REBAR & CAP, L.S. 4694 (NO RECORD)
- SET 3/4" PIPE AND PLUG L.S. 4694



<b>CORNER RECORD</b>	
PARCEL 1B, 24 P.M. 57	
TIBURON MARIN COUNTY CALIFORNIA	
SCALE: 1" = 40'	DRAWN BY:
DATE: 10/25/10	SHEET 1 OF 1
<b>LAWRENCE P. DOYLE</b>	
LAND SURVEYOR/CIVIL ENGINEER	
100 HELENS LANE MILL VALLEY CA 94941 (415-388-9585)	
DRAWING NO.	2058-CR