

L. A. Stevens & Associates, Inc.
Professional Land Surveyors
Novato, California

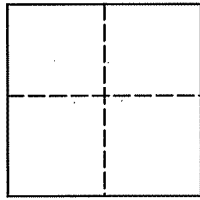
Lands of Lacey Trust
Job #: 09-1225

CORNER RECORD

Document Number 039-151-21

Town of Tiburon, County of Marin, California

Brief Legal Description: Being Lot 3 of that certain map entitled "Map of Pilgrim Heights", filed for record October 3, 1962 in Volume 11 of Maps at Page 42, Marin County Records.



CORNER TYPE

Government Corner Control
Meander Property
Rancho Other
Date of Survey September 28, 2009

COORDINATES (Optional)

N _____
E _____
Zone _____ NAD27 NAD83
NAD 83 Epoch _____
Elev. _____
Vert. Datum: NGVD29 NAVD88
Meas. Units: Metric Imperial

Corner - Left as found Found and tagged Established Reestablished Rebuilt

Identification and type of corner found: Evidence used to identify or procedure used to establish or reestablish the corner:
See Page 2 of 2

A description of the physical condition of the monument as found and as set or reset:
See Page 2 of 2

SURVEYOR'S STATEMENT

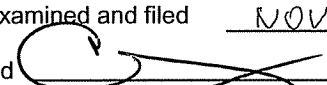
This Corner Record was prepared by me or under my direction in conformance with
The Land Surveyor's Act on October 29, 2009.

Signed  P.L.S. 6649



COUNTY SURVEYOR'S STATEMENT

This Corner Record was received NOVEMBER 9, 2009
and examined and filed NOVEMBER 16, 2009

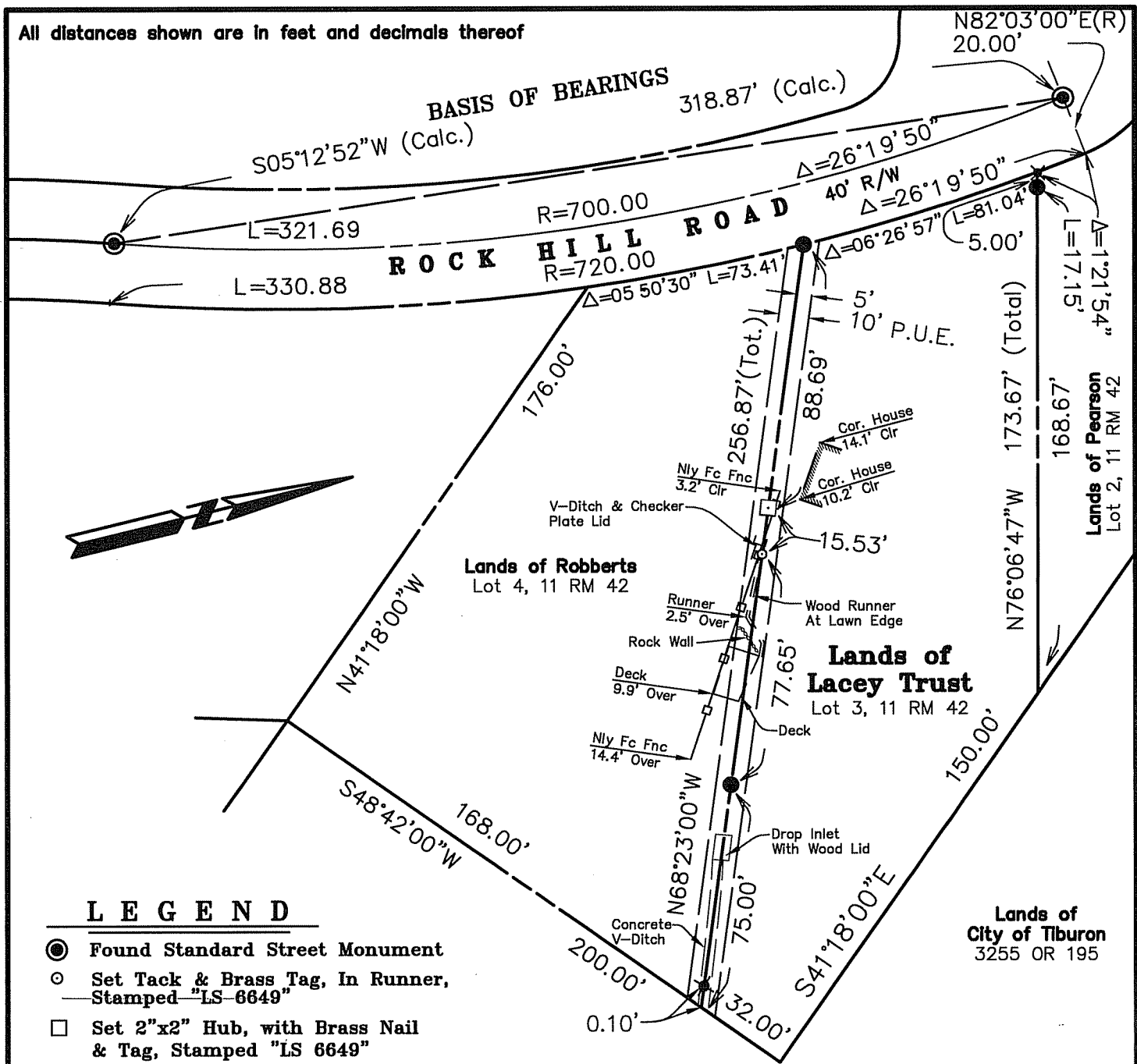
Signed  P.L.S. or R.C.E. No. 7128

Title COUNTY SURVEYOR

County Surveyors' Comment _____



All distances shown are in feet and decimals thereof



LEGEND

- Found Standard Street Monument
- Set Tack & Brass Tag, In Runner, Stamped "LS 6649"
- Set 2"x2" Hub, with Brass Nail & Tag, Stamped "LS 6649"
- Found 3/4" Iron Pipe & Plastic Plug, Stamped "LS 6649", per Corner Record AP 039-151-21
- P.U.E. Public Utility Easement, per 11 RM 42
- ✕ Found Brass Tag In V-Ditch, Stamped "LS 6649", Disturbed per Corner Record AP 039-151-21

Clr Clear
Fc Face
Tot. Total



10-29-09

Lands of Lacey

(Lot 3, 11 RM 42)

Tiburon Marin County California
Scale: 1" = 50' September 2009

L.A. Stevens & Associates, Inc.

Professional Land Surveyors * (415) 382-8321
1132 Bel Marin Keys Blvd. * Novato, CA 94947

Lawrence A. Stevens, PLS 6649
my license expires 12/31/09