

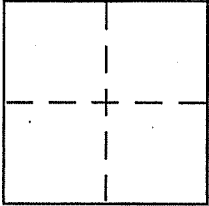
CORNER RECORD

Document Number 039-151-21

City of Tiburon

County of Marin, California

Brief Legal Description Lot 3, Map of "Pilgrim Heights" 11 RM 42



CORNER TYPE

Government Corner Control
Meander Property
Rancho Other
Date of Survey 11-27-2000

COORDINATES (Optional)

N. _____
E. _____
Zone _____ NAD27 NAD83
NAD83 Epoch _____
Elev. _____
Vert. Datum: NGVD29 NAVD88
Meas. Units: Metric Imperial

Corner -- Left as found Found and tagged Established Reestablished Rebuilt

Identification and type of corner found: Evidence used to identify or procedure used to establish or reestablish the corner:

See "Plat of Survey" Page 2 of 2.

A description of the physical condition of the monument as found and as set or reset:

See "Plat of Survey" Page 2 of 2.

SURVEYOR'S STATEMENT

This Corner Record was prepared by me or under my direction in conformance with

the Land Surveyor's Act on January 2, 2001

Signed [Signature] P.L.S. ~~6649~~ No. 6649

COUNTY SURVEYOR'S STATEMENT

This Corner Record was received JANUARY 4, 2001

and examined and filed JANUARY 8, 2001

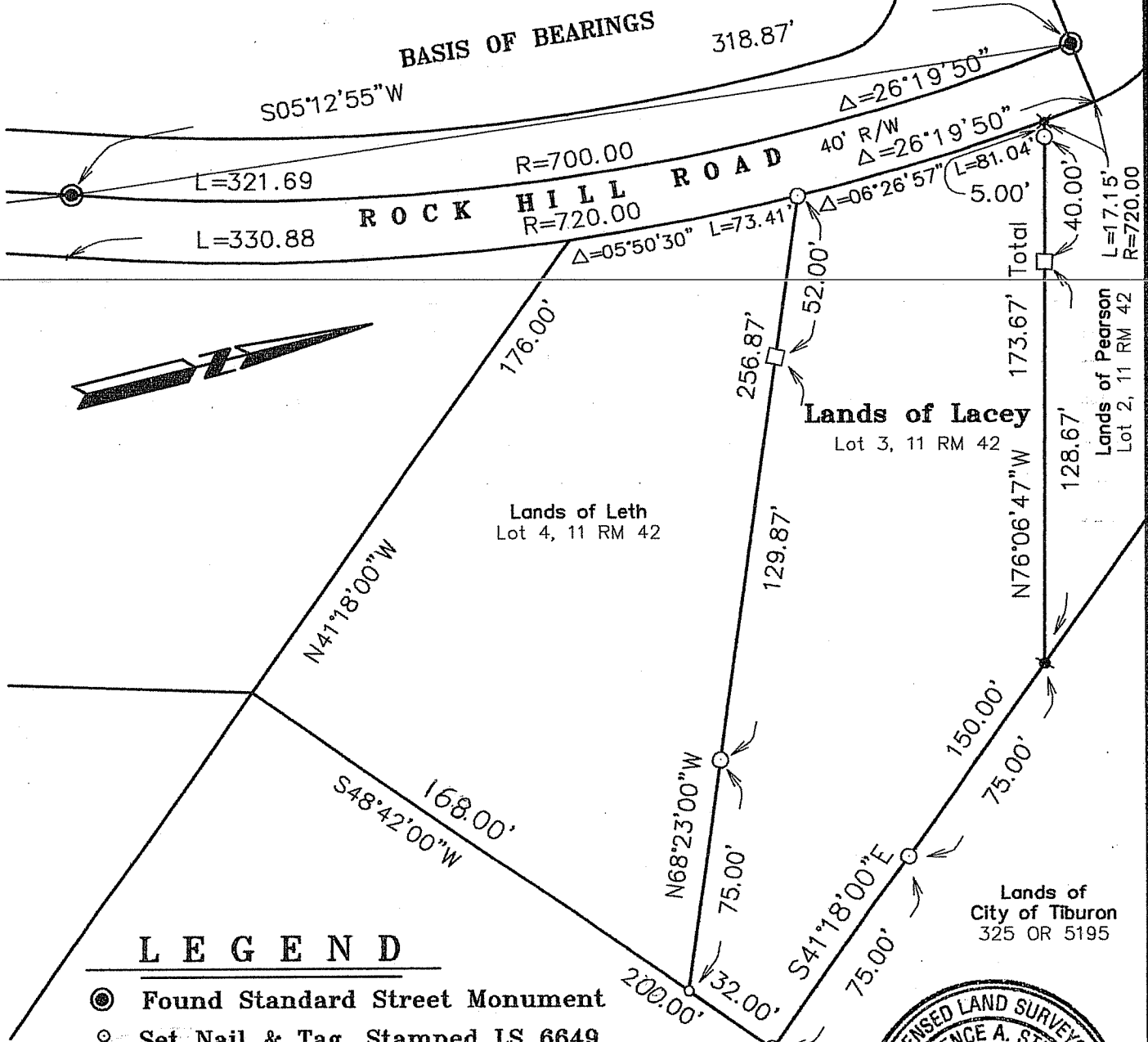
Signed [Signature] P.L.S. or R.C.E. No. 7128

Title DEPUTY

County Surveyor's Comment _____



All distances shown are in feet and decimals thereof



LEGEND

- Found Standard Street Monument
- Set Nail & Tag, Stamped LS 6649
- ✕ Found PK & Washer, Stamped LS 5767
- ⊙ Set 3/4" Iron Pipe & Plastic Plug, Stamped LS 6649
- Found 5/8" Rebar & Plastic plug, Stamped LS 5767
- Set 2"x2" Hub with Tack



Lands of Lacey

(Lot 3, 11 RM 92)

Tiburon Marin County California
 Scale: 1" = 50' November 2000

L.A. Stevens & Associates, Inc.

Professional Land Surveyors * (415) 382-8321
 1132 Bel Marin Keys Blvd. * Novato, CA 94947

Lawrence A. Stevens
 Lawrence A. Stevens, PLS 6649
 my license expires 12/31/03