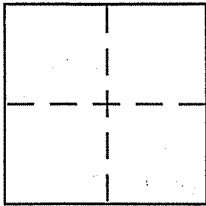


CORNER RECORD

City of Tiburon
Brief Legal Description Lot 7, 11 Maps 41

Document Number APN 039-141-19
County of Marin, California



CORNER TYPE

Government Corner Control
Meander Property
Rancho Other
Date of Survey 10/25/07

COORDINATES (Optional)

N. _____
E. _____
Zone _____ NAD27 NAD83
NAD83 Epoch _____
Elev. _____
Vert. Datum: NGVD29 NAVD88
Meas. Units: Metric Imperial

Corner - Left as found Found and tagged Established Reestablished Rebuilt

Identification and type of corner found: Evidence used to identify or procedure used to establish or reestablish the corner:

See page 2 of 2

A description of the physical condition of the monument as found and as set or reset:

See page 2 of 2

SURVEYOR'S STATEMENT

This Corner Record was prepared by me or under my direction in conformance with the Land Surveyor's Act on 11/15/07

Signed [Signature] P.L.S or R.C.E. No. 6784



COUNTY SURVEYOR'S STATEMENT

This Corner Record was received 11-14-07

and examined and filed DECEMBER 10, 2007

Signed [Signature] P.L.S or R.C.E. No. 7128

Title COUNTY SURVEYOR



County Surveyor's Comment _____

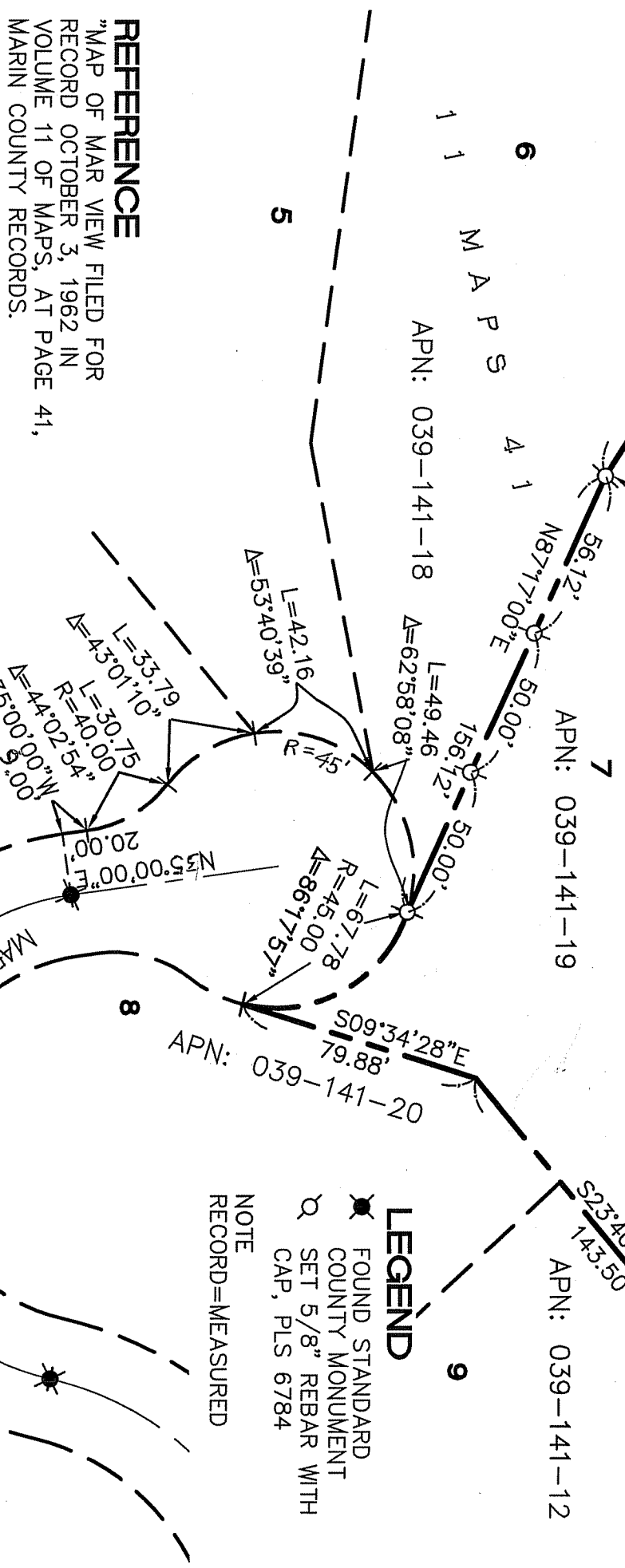
18 13 MAPS 9 3 13 MAPS 7 5 12 RM 102 2

APN: 039-252-05 APN: 039-252-06 APN: 039-252-10 APN: 039-252-09

385.37'

APN: 039-141-18 APN: 039-141-19 APN: 039-141-20 APN: 039-141-12

SET BRASS NAIL AND TAG, PLUS 6784 IN CONCRETE GUTTER



LEGEND

- FOUND STANDARD COUNTY MONUMENT
- SET 5/8" REBAR WITH CAP, PLS 6784

NOTE
RECORD=MEASURED

REFERENCE

"MAP OF MAR VIEW FILED FOR RECORD OCTOBER 3, 1962 IN VOLUME 11 OF MAPS, AT PAGE 41, MARIN COUNTY RECORDS.

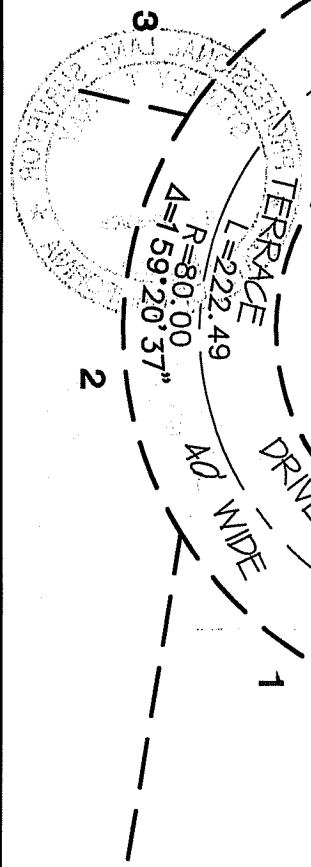
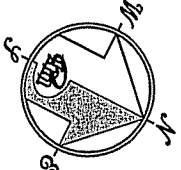
CORNER RECORD

MERIDIAN SURVEYING, INC.

1812 UNION STREET
SAN FRANCISCO, CA 94123
(415) 440-4131

777 GRAND AVENUE, SUITE 202
SAN RAFAEL, CA 94901
(415) 456-6460

07110
Info@meridiansurvey.com



1 3 MAPS 4 1

APN: 039-141-18