

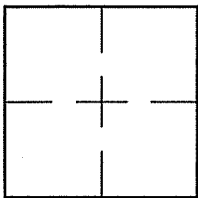
CORNER RECORD

Document Number A.P. 039-141-18

City of TIBURON

County of MARIN, California

Brief Legal Description LOT 6 PER 11 R.M. 41



CORNER TYPE

COORDINATES (Optional)

Government Corner Control

Meander Property

Rancho Other

Date of Survey 10/14/09

N. _____
 E. _____
 Zone _____ NAD27 NAD83
 NAD83 Epoch _____
 Elev. _____
 Vert. Datum: NGVD29 NAVD88
 Meas. Units: Metric Imperial

Corner- Left as found Found and tagged Established Reestablished Rebuilt

Identification and type of corner found: Evidence used to identify or procedure used to establish or reestablish the corner:
REESTABLISHED THE NORTHERLY AND WESTERLY LINES OF LOT 6 PER 11 R.M. 41 AND AS SHOWN ON SHEET 2.

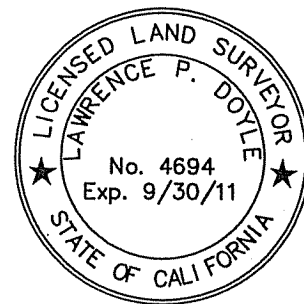
A description of the physical condition of the monument as found and as set or reset: SEE SHEET 2.

SURVEYOR'S STATEMENT

This Corner Record was prepared by me or under my direction in conformance with

the Land Surveyor's Act on OCTOBER 15, 2009.

Signed *Lawrence P. Doyle* P.L.S. or R.C.E. No. P.L.S. 4694



COUNTY SURVEYOR'S STATEMENT

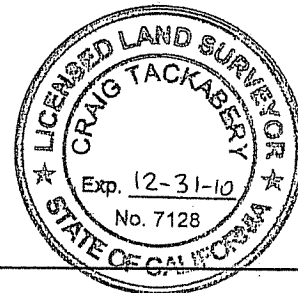
This Corner Record was received OCTOBER 21, 2009

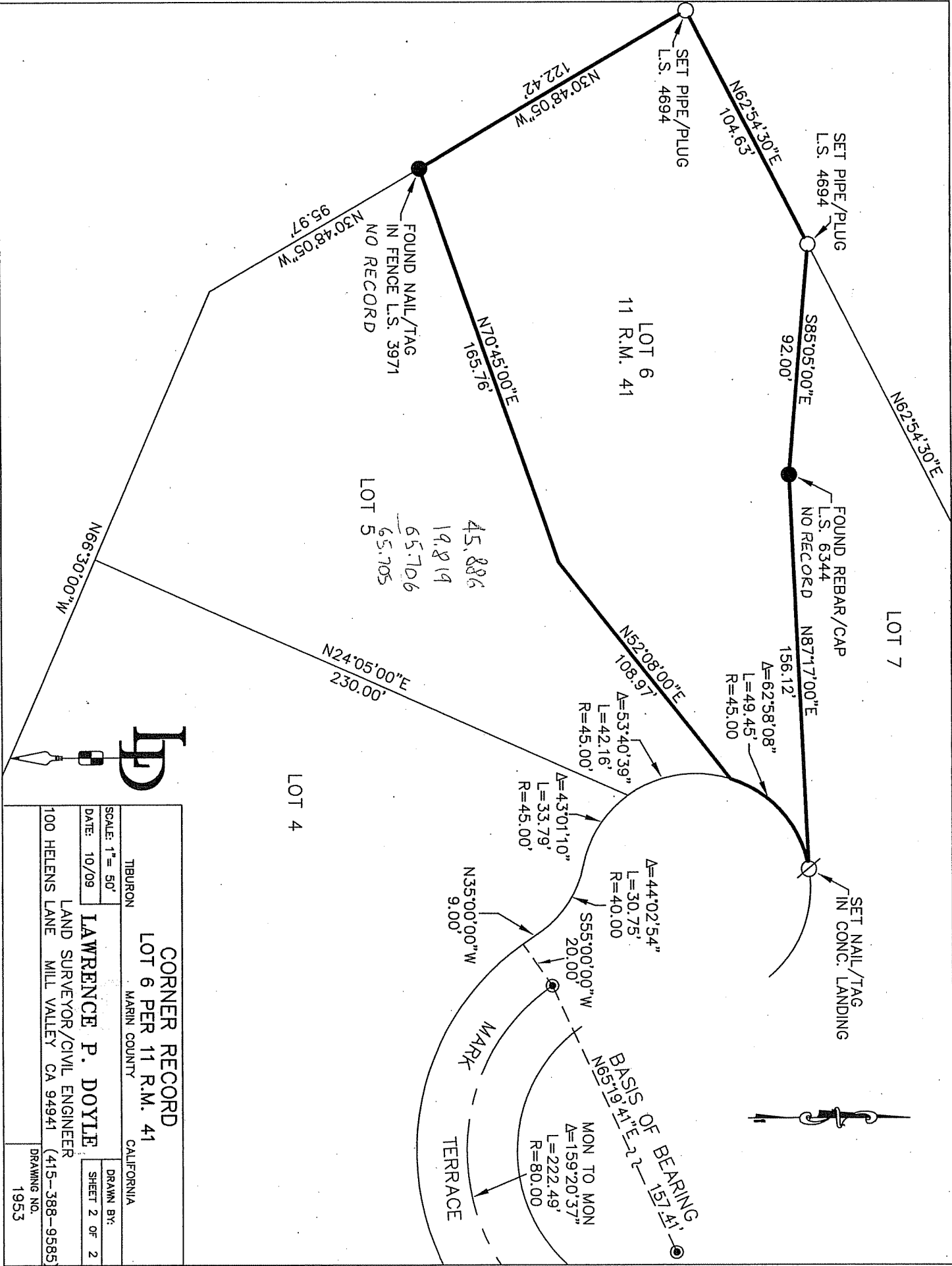
and examined and filed NOVEMBER 16, 2009

Signed *[Signature]* P.L.S. or R.C.E. No. 7128

Title COUNTY SURVEYOR

County Surveyor's Comment _____





CORNER RECORD
LOT 6 PER 11 R.M. 41
 TIBURON MARIN COUNTY CALIFORNIA

SCALE: 1" = 50'
 DATE: 10/09
LAWRENCE P. DOYLE
 LAND SURVEYOR/CIVIL ENGINEER
 100 HELENS LANE MILL VALLEY CA 94941 (415-388-9585)

DRAWN BY: SHEET 2 OF 2
 DRAWING NO. 1953

