

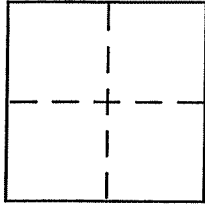
CORNER RECORD

Document Number I.N. 1993-100382

City of TIBURON

County of MARIN, California

Brief Legal Description Lot Four, Map of Mar View, 11-Maps-41, Marin County Records



CORNER TYPE

Government Corner Control
Meander Property
Rancho Other
Date of Survey _____

COORDINATES (Optional)

N. _____
E. _____
Zone _____ NAD27 NAD83
NAD83 Epoch _____
Elev. _____
Vert. Datum: NGVD29 NAVD88
Meas. Units: Metric Imperial

Corner - Left as found Found and tagged Established Reestablished Rebuilt

Identification and type of corner found: Evidence used to identify or procedure used to establish or reestablish the corner:

Found 3/4" I.D. iron pipes with plastic plug "PLS 4794" at the northeasterly, easterly and southeasterly corner of said Lot Four. Found original standard street monuments with pin in concrete in centerline of Mark Terrace as shown upon reverse side.

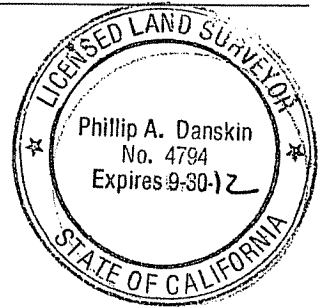
A description of the physical condition of the monument as found and as set or reset: _____

As shown upon reverse side.

SURVEYOR'S STATEMENT

This Corner Record was prepared by me or under my direction in conformance with the Land Surveyor's Act on 9 January 2012

Signed [Signature] P.L.S. or R.C.E. No. PLS 4794



COUNTY SURVEYOR'S STATEMENT

This Corner Record was received JANUARY 12, 2012 and examined and filed FEBRUARY 6, 2012

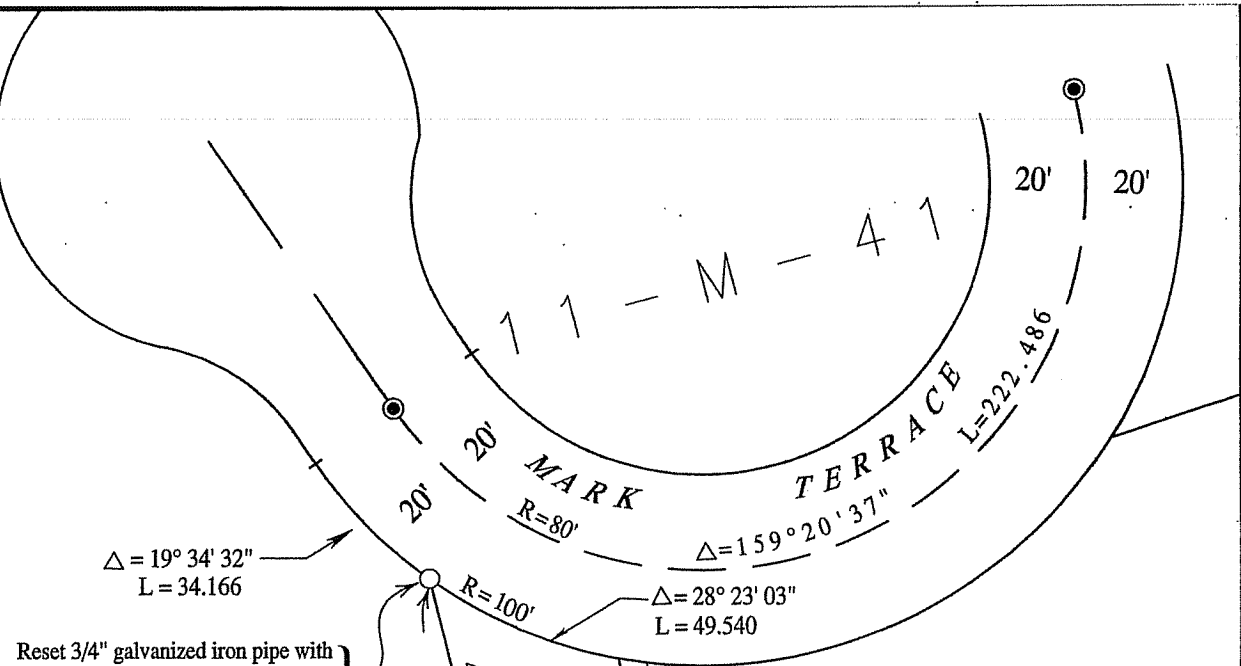
Signed [Signature] P.L.S. or R.C.E. No. 7128

Title COUNTY SURVEYOR



County Surveyor's Comment _____

SCALE 1" = 40'



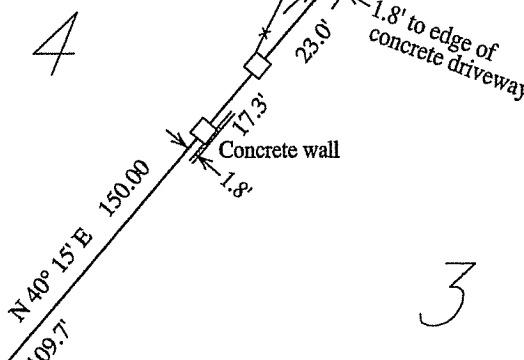
$\Delta = 19^\circ 34' 32''$
L = 34.166

$\Delta = 28^\circ 23' 03''$
L = 49.540

Reset 3/4" galvanized iron pipe with plastic plug "DANSKIN PLS 4794", disturbed by fence construction.

NIELSEN
I.N. 93-100382

- Denotes original standard street monument per 11-M-41
- Denotes found 3/4" I.D. iron pipe with plastic plug "PLS 4794" per Corner Record filed on September 18, 1997.
- Denotes set 1 1/2" x 1 1/2" hub with bronze nail & tag "PLS 4794 DANSKIN"



ETH & ROSS
I.N. 2000-35127

DEL MAR ESTATES
UNIT 2
10 - M - 53

MAP OF
DEL MIRIMAR
11 - M - 33

Survey No. 759.2

For : Vigo & Arlene Nielsen
29 Mark Terrace
Tiburon , California



PREPARED BY
PHILLIP A. DANSKIN & ASSOCIATES

LAND SURVEYOR
SONOMA, CALIFORNIA
PHONE : (707) 938-2520