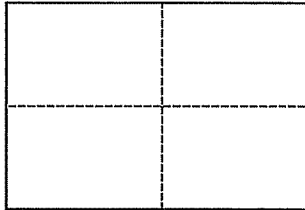


CORNER RECORD

Document Number **APN 39-133-15, APN 39-135-01, APN 39-134-11**

City of Tiburon County of Marin California

Brief Legal Description Monument Per 10 Record Map 53 at intersection Hilary Drive and Rowley Circle



CORNER TYPE

COORDINATES (Optional)

Government Corner Control North _____
Meander Property East _____
Rancho Other Zone _____ Datum _____
Date of Survey October 2, 2012 Elev. _____

Corner _____ Left as found Found and tagged Established Reestablished Rebuilt

Identification and type of corner found: Evidence used to identify or procedure used to establish or reestablish the corner:

Found original monument disturbed due to recent construction. Held found original monuments per 10 RM 53 and reestablished original location (see exhibit page 2)

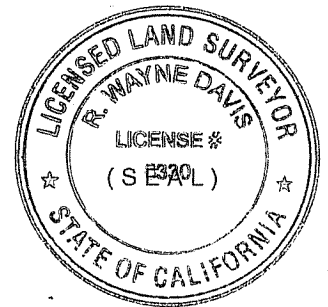
A description of the physical condition of the monument as found and as set or reset: _____

Set 2" Brass Disk Stamped LS 6330

SURVEYOR'S STATEMENT

This Corner Record was prepared by me or under my direction in conformance with the Land Surveyors' Act on October 3, 2012

Signed [Signature] L.S. or R.C.E. Number LS 6330



COUNTY SURVEYOR'S STATEMENT

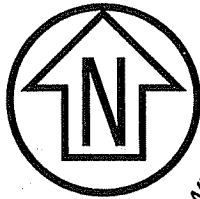
This Corner Record was received OCTOBER 10, 2012

and examined and filed NOVEMBER 6, 2012

Signed [Signature] Title COUNTY SURVEYOR



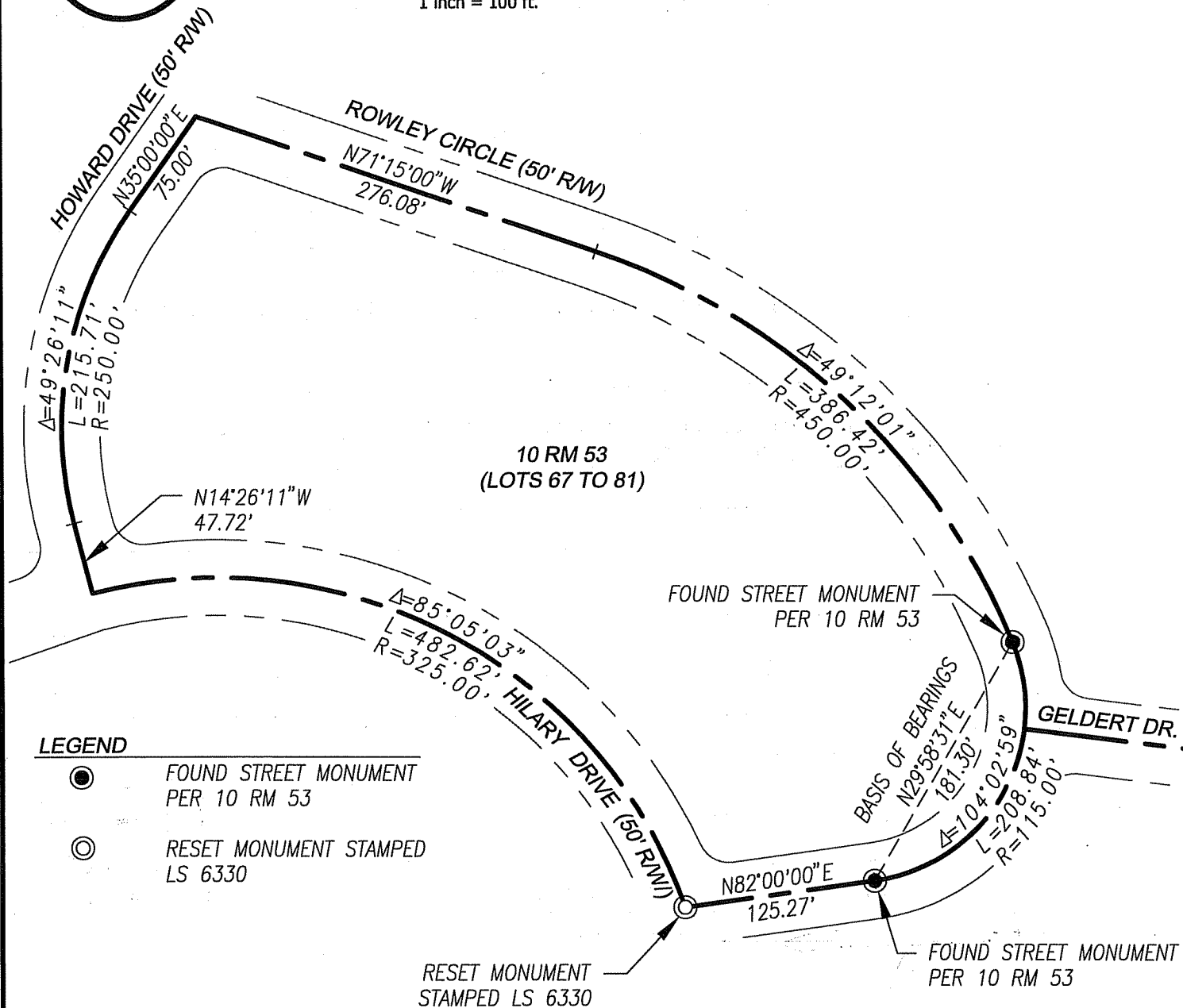
County Surveyor's Comment _____



Graphic Scale (in feet)



1 inch = 100 ft.



LEGEND

- FOUND STREET MONUMENT PER 10 RM 53
- RESET MONUMENT STAMPED LS 6330

BASIS OF BEARINGS

THE BASIS OF BEARINGS FOR THIS MAP IS $N29^{\circ}58'31''E$ BETWEEN TWO FOUND MONUMENTS IN ROWLEY CIRCLE AS SHOWN ON 10 RM 53, MARIN COUNTY RECORDS.

CSW | ST2

CSW/Stuber-Stroeh Engineering Group, Inc.

Civil & Structural Engineers | Surveying & Mapping | Environmental Planning
 Land Planning | Construction Management

45 Leveroni Court
 Novato, CA 94949

tel: 415.883.9850
 fax: 415.883.9835

<http://www.cswst2.com>

© 2012

Rev. X

Date: 10/03/12

Job No. 4114502

Scale: 1" = 100'

DEL MAR ESTATES CORNER RECORD ROWLEY CIRCLE & HILARY DRIVE

TIBURON

MARIN COUNTY

CALIFORNIA