

CORNER RECORD

Agency Index 21-085

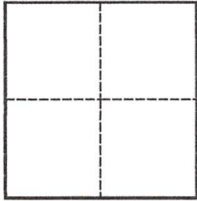
Document Number 039-121-18

City of Tiburon County of Marin, California

Brief Legal Description Lot 3, Map of Acacia Court Subdivision 20 RM 41, M.C.R., AP No. 039-121-18

CORNER TYPE

COORDINATES (Optional)



Government Corner Control
Meander Property
Rancho Other

N. _____ E. _____

Elevation _____

Units Metric U.S. Survey Foot

Horizontal Datum _____

Zone _____ Epoch Date _____

Vertical Datum _____

Complies with Public Resources Code §§8801-8819

Complies with Public Resources Code §§8890-8902

PLS Act Ref.: 8765(d) 8771 8773 Other:

Corner/Monument: Left as found Established Rebuilt Pre-Construction

Found and tagged Reestablished Referenced Post-Construction

Narrative of corner identified and monument as found, set, reset, replaced, or removed:

See sheet #2 for description(s):

Set 3/4" Iron Pipe Tagged LS 5092 to reset the two missing 5/8" Rebars Tagged RCE 27577.

Set monument(s) at record bearings and distances from found well monuments in Acacia Drive as shown on Map of Acacia Court Subdivision 20 RM 41, M.C.R.

SURVEYOR'S STATEMENT

This Corner Record was prepared by me or under my direction in conformance with

the Professional Land Surveyors' Act on May 25, 2021

Signed *Mike Buti* P.L.S. or R.C.E. No. LS 5092



COUNTY SURVEYOR'S STATEMENT

This Corner Record was received 05/28/21

and examined and filed 07/14/21

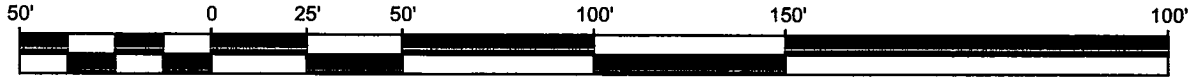
Signed *J. L. L.* P.L.S. or R.C.E. No. 9292

Title DEPUTY

County Surveyor's Comment

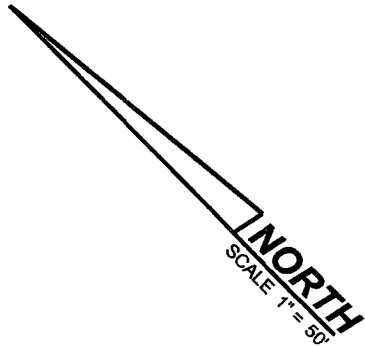
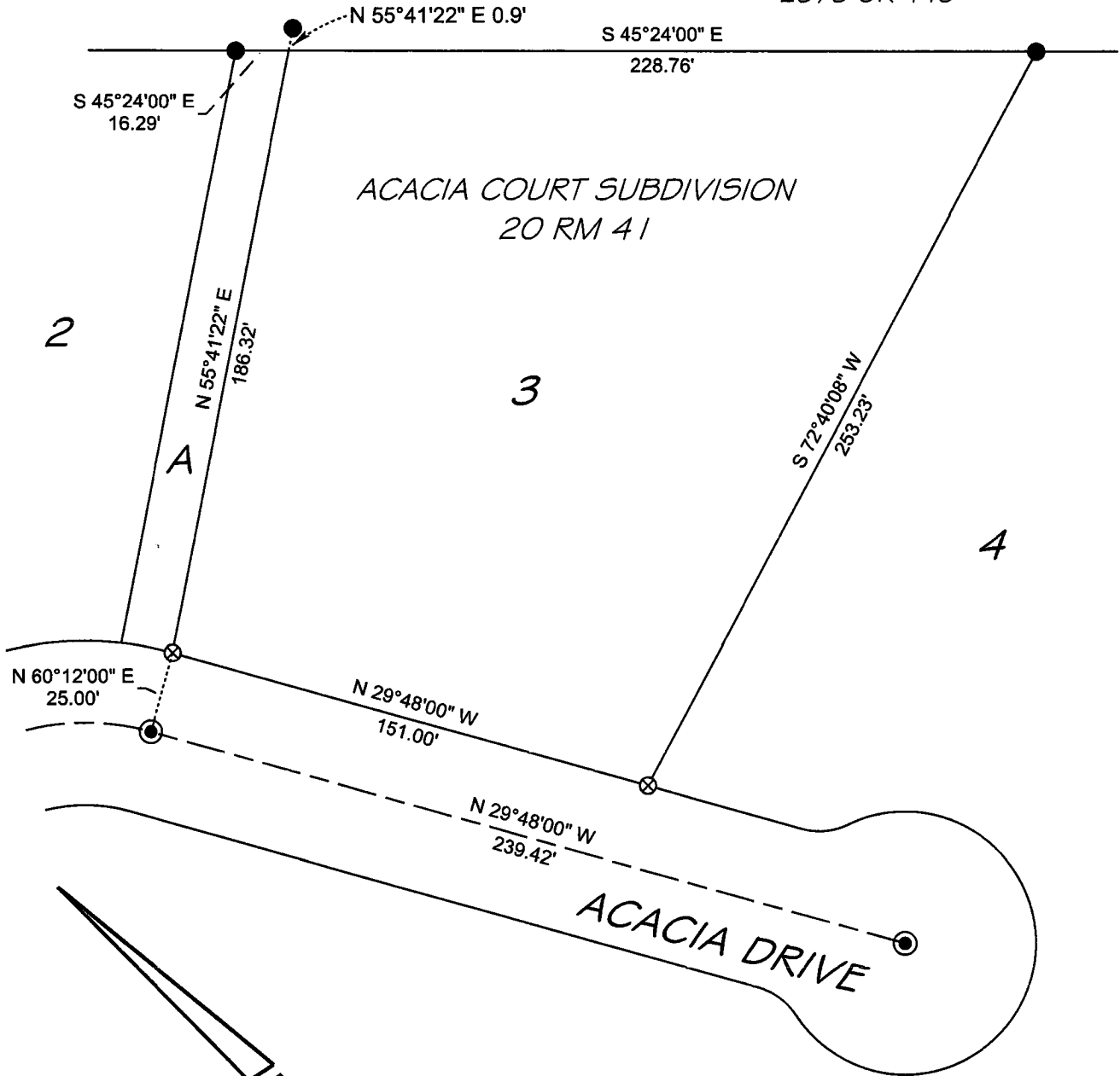


Graphic Scale



1" = 50'

SLATER & SON
2373 OR 446



LEGEND

- ⊗ SET 3/4" IRON PIPE- TAGGED LS 5092
- ⊙ FOUND WELL MONUMENT- 2-1/2' BRASS DISK WITH PUNCH STAMPED RCE 27577
- FOUND 5/8" REBAR TAGGED RCE 27577

NOTES:

1. ALL DISTANCES SHOWN HEREON ARE IN FEET AND DECIMALS THEREOF.
2. ALL DISTANCES AND BEARINGS ARE BOTH RECORD AND MEASURED.