

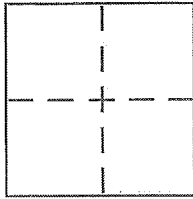
CORNER RECORD

Document Number APN 039-101-33

City of Tiburon

County of Marin, California

Brief Legal Description Lot 13 ~ 8 RM 12



CORNER TYPE

Government Corner  Control   
Meander  Property   
Rancho  Other   
Date of Survey 8/31/16

COORDINATES (Optional)

N. \_\_\_\_\_  
E. \_\_\_\_\_  
Zone \_\_\_\_\_ NAD27  NAD83   
NAD83 Epoch \_\_\_\_\_  
Elev. \_\_\_\_\_  
Vert. Datum: NGVD29  NAVD88   
Meas. Units: Metric  Imperial

Corner - Left as found  Found and tagged  Established  Reestablished  Rebuilt

Identification and type of corner found: Evidence used to identify or procedure used to establish or reestablish the corner:

Found standard street monuments AS shown on reverse

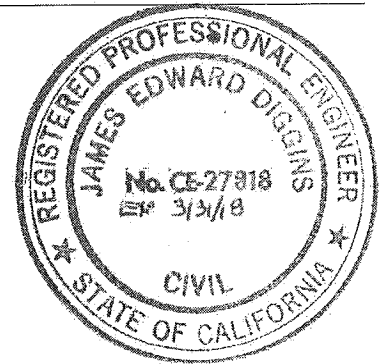
A description of the physical condition of the monument as found and as set or reset:

Set 1/2" rebar and cap at the locations shown on the reverse.  
Caps are marked ~ RCE 27818

SURVEYOR'S STATEMENT

This Corner Record was prepared by me or under my direction in conformance with the Land Surveyor's Act on Oct 24, 2016

Signed [Signature] - P.L.S. or R.C.E. No. 27818



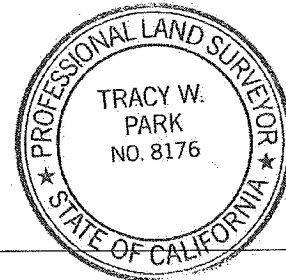
COUNTY SURVEYOR'S STATEMENT

This Corner Record was received OCTOBER 26, 2016

and examined and filed FEBRUARY 16, 2017

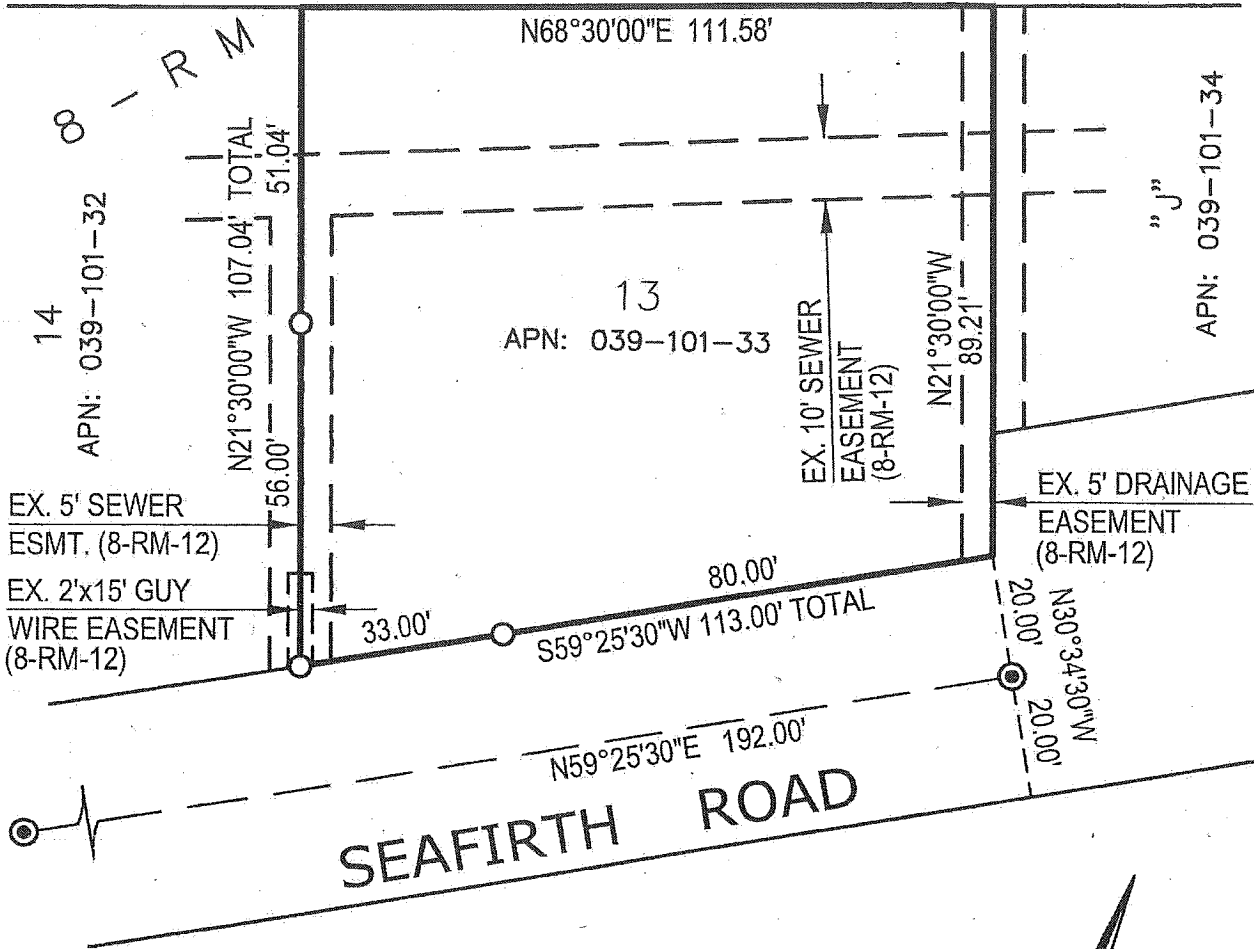
Signed T. W. Park P.L.S. or R.C.E. No. 8176

Title \_\_\_\_\_



County Surveyor's Comment \_\_\_\_\_

"H"  
APN: 039-051-03



LEGEND

- ⊙ FOUND STREET MONUMENT IN STANDARD CASING (8-RM-12)
- SET 1/2" REBAR & CAP - RCE 27818

JOB 16266  
APN: 039-101-33